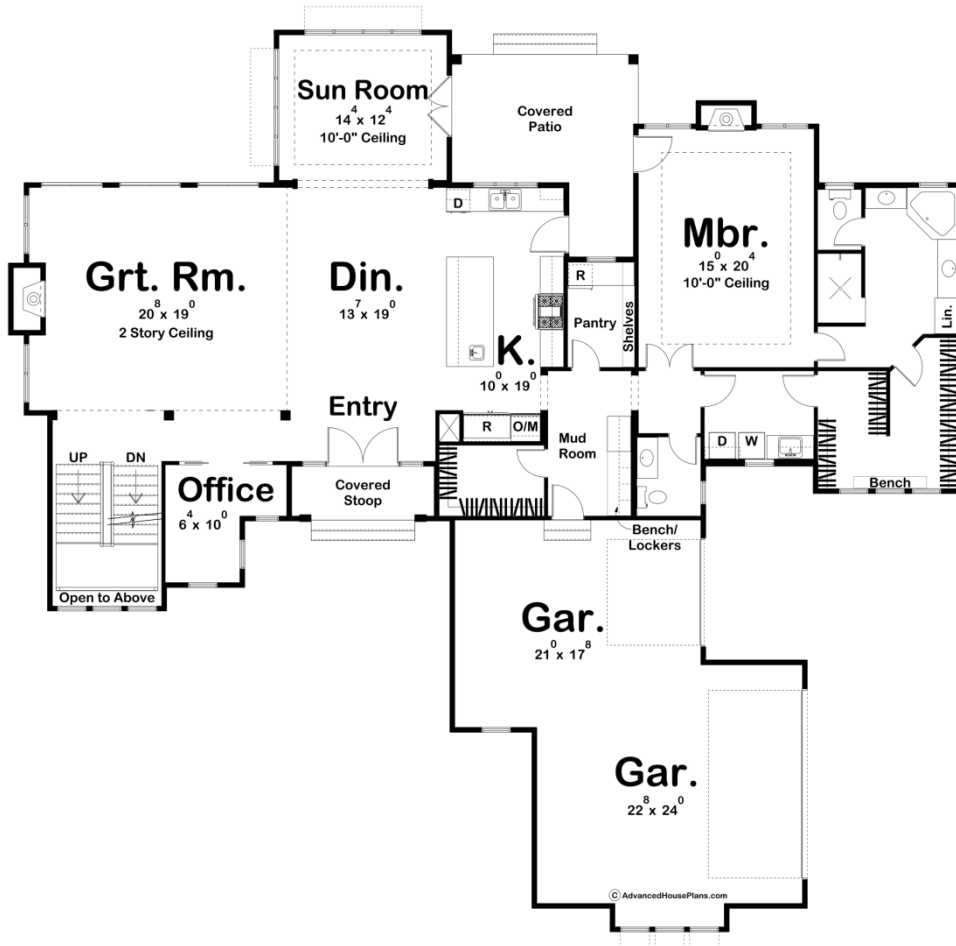
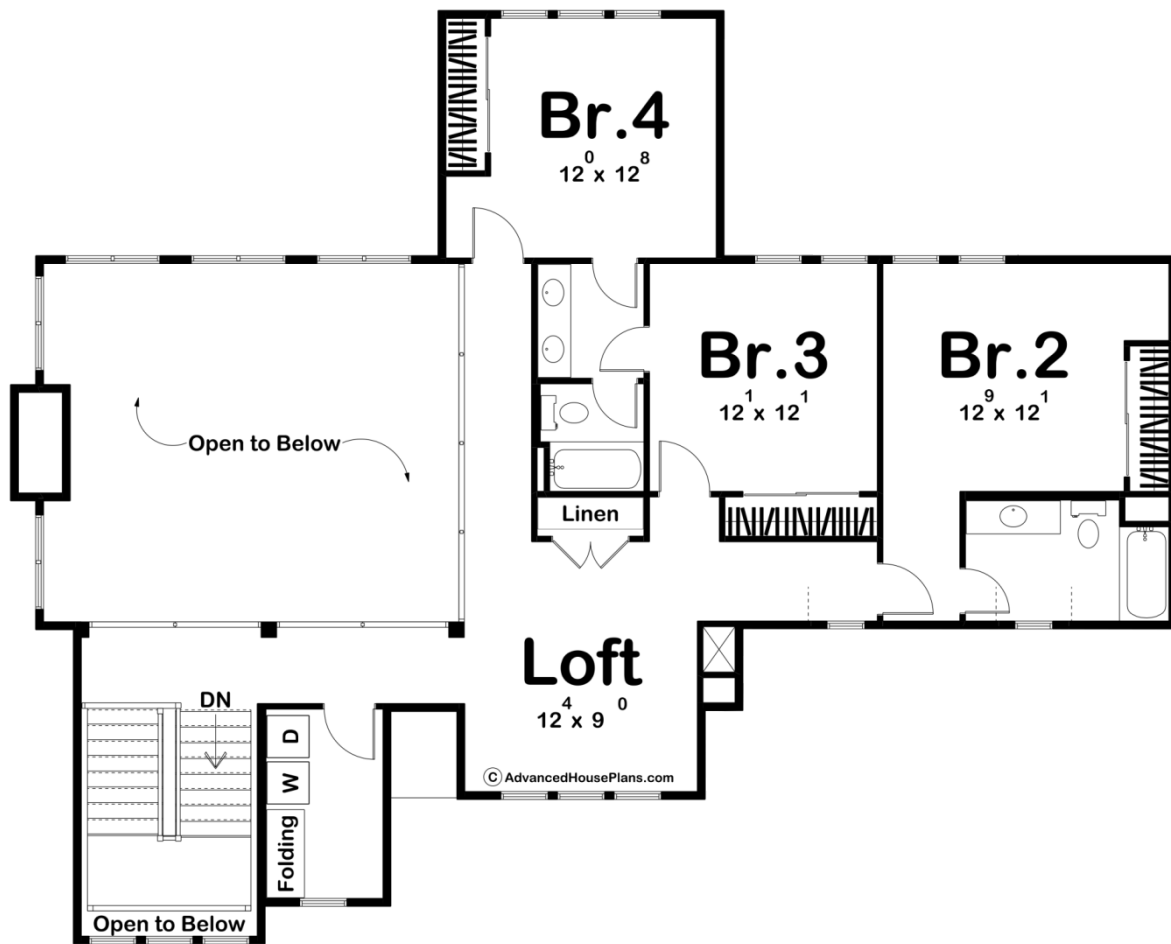




30113 - Brook Hollow Data Sheet

| | | | | | |
|---------------|-----------|------------|-----------|----------------|----------------|
| 3696 SQ FT | 4 BEDS | 4 BATHS | 3 BAYS | 81' 4" WIDE | 76' 8" DEEP |
|---------------|-----------|------------|-----------|----------------|----------------|





Construction Specs

Layout

| | |
|-------------|---|
| Bedrooms | 4 |
| Bathrooms | 4 |
| Garage Bays | 3 |

Square Footage

| | |
|---------------------|--------------|
| Main Level | 2477 Sq. Ft. |
| Second Level | 1219 Sq. Ft. |
| Covered Area | 269 Sq. Ft. |
| Garage | 812 Sq. Ft. |
| Total Finished Area | 3696 Sq. Ft. |

Exterior Dimensions

| | |
|--|--------|
| Width | 81' 4" |
| Depth | 76' 8" |
| Ridge Height | 33' 0" |
| <i>Calculated from main floor line</i> | |

Default Construction Stats

Stats are unique to the individual plan.

| | |
|----------------------------|------------------------------------|
| Foundation Type | Basement |
| Exterior Wall Construction | 2x4 |
| Roof Pitches | 12/12 Primary, 4/12 8/12 Secondary |
| Foundation Wall Height | 9' |
| Main Wall Height | 10' |
| Second Wall Height | 8' |

Plan Description

The Brook Hollow plan has amazing Modern Cottage curb appeal. The exterior combines stucco, contrasting colors, and large windows to create an exciting façade. Just inside the home, you'll be greeted by a wide open floor plan. The 2 story great room is warmed by a fireplace and flows seamlessly with the dining and kitchen. The kitchen features a large island and a walk-in pantry. Tucked behind the kitchen, you'll find the master suite conveniently located on the main floor. The master suite is warmed by its own fireplace and features a bathroom that includes his/her vanities, a soaking tub, and an enclosed toilet. The amazing walk-in closet has access to the main floor laundry room. On the second level, a loft overlooks the great room. Three additional bedrooms can be found on the second level. Bedroom 2 has access to its own bathroom while bedrooms 3 and 4 share a jack and jill bathroom. Back on the main floor, the home's massive 3 car side load garage accesses the home through a convenient mudroom.