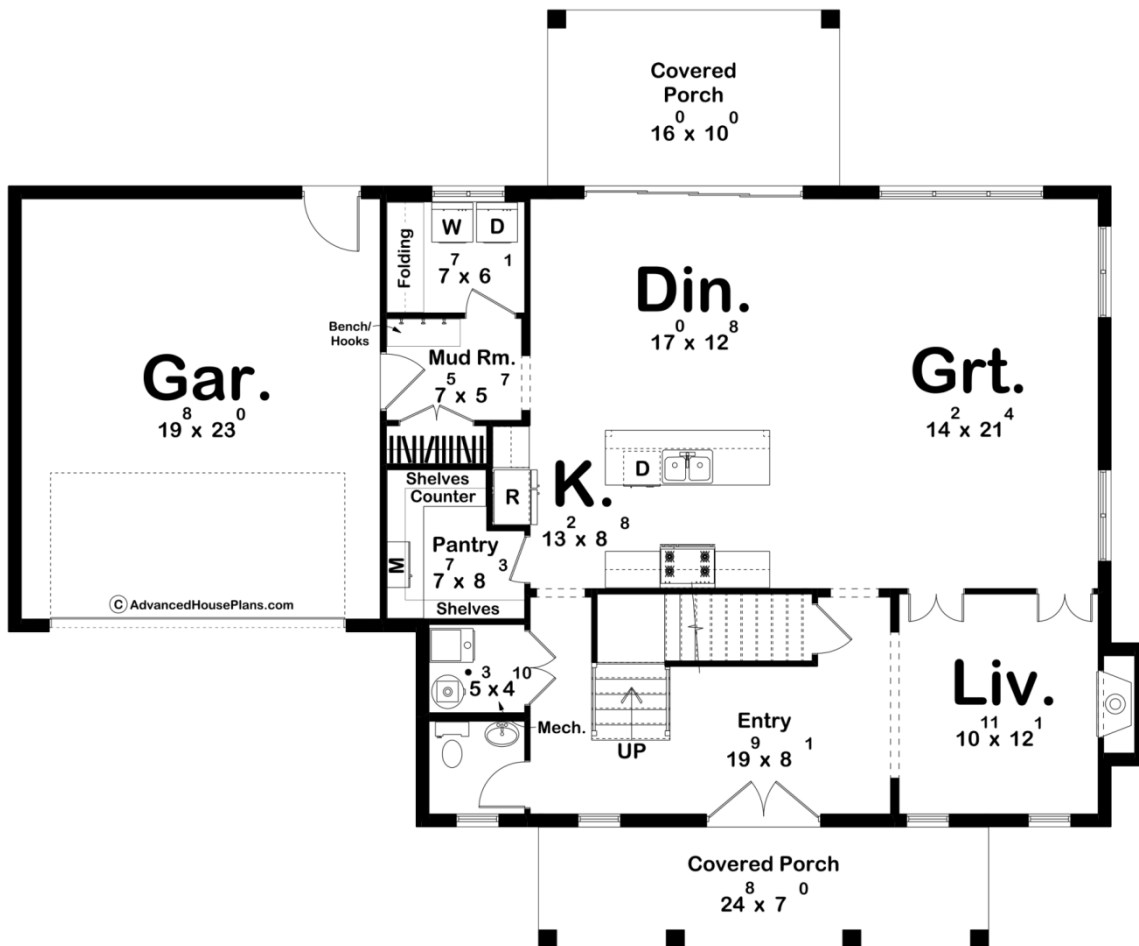
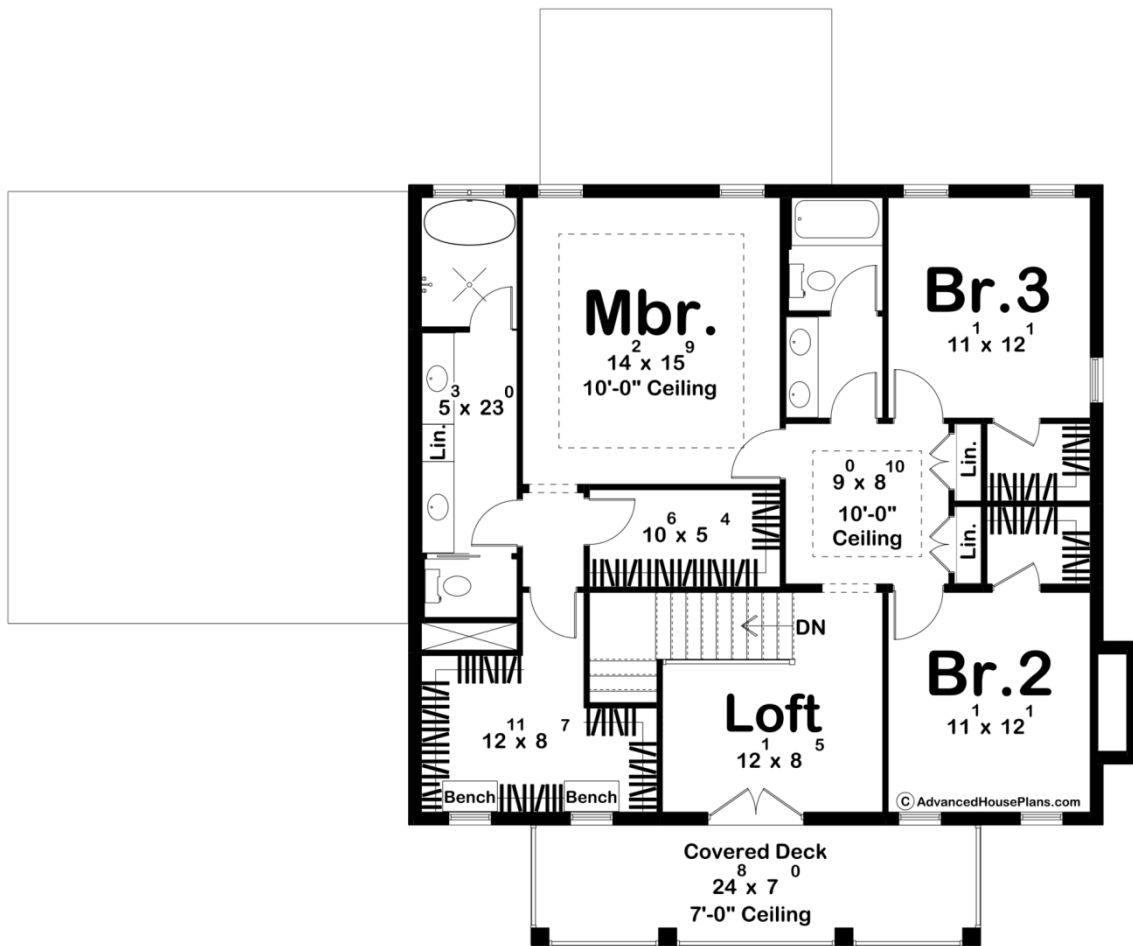




**30406 - Brewsters Mill Data Sheet**

2544 SQ FT	3 BEDS	3 BATHS	2 BAYS	61' 8" WIDE	51' 4" DEEP
---------------	-----------	------------	-----------	----------------	----------------





## Construction Specs

### Layout

Bedrooms	3
Bathrooms	3
Garage Bays	2

### Square Footage

Main Level	1320 Sq. Ft.
Second Level	1224 Sq. Ft.
Covered Area	506 Sq. Ft.
Garage	465 Sq. Ft.
Total Finished Area	2544 Sq. Ft.

### Exterior Dimensions

Width	61' 8"
Depth	51' 4"
Ridge Height	31' 4"
<i>Calculated from main floor line</i>	

## Default Construction Stats

*Stats are unique to the individual plan.*

Foundation Type	Slab
Exterior Wall Construction	2x4
Roof Pitches	Primary 8/12, Secondary 12/12, flat
Main Wall Height	9'
Second Wall Height	9'

## Plan Description

This two-story colonial-style house boasts a timeless elegance with its striking brick facade. The exterior is adorned with classic wood shutters, adding a touch of traditional charm to the overall aesthetic. The front of the house features a covered porch with a covered deck above, providing inviting spaces for relaxation and enjoying the outdoors. Upon entering the home, you're greeted by a vestibule which leads you to an open floor plan that seamlessly connects the main living areas. The spacious layout is perfect for entertaining, with the kitchen flowing into the dining and great room. Large windows flood the space with natural light, creating an inviting atmosphere throughout. Adjacent to the great room is an additional living space, providing versatility for various activities or relaxation areas. Whether it's a cozy reading nook or a playroom for children, this extra space offers endless possibilities. Ascending to the second floor, you'll find a loft area that can serve as a home office, study, or cozy sitting area. The master bedroom is a luxurious retreat, featuring two walk-in closets for ample storage and organization. The ensuite master bathroom offers a spa-like experience with modern fixtures and finishes. One of the highlights of the second floor is the covered deck which is accessible from the loft area. This outdoor space offers a private retreat to enjoy the surrounding views and fresh air, making it the perfect spot for morning coffee or evening relaxation. Overall, this colonial-style house combines classic architecture with modern amenities to create a welcoming and functional home for modern living.