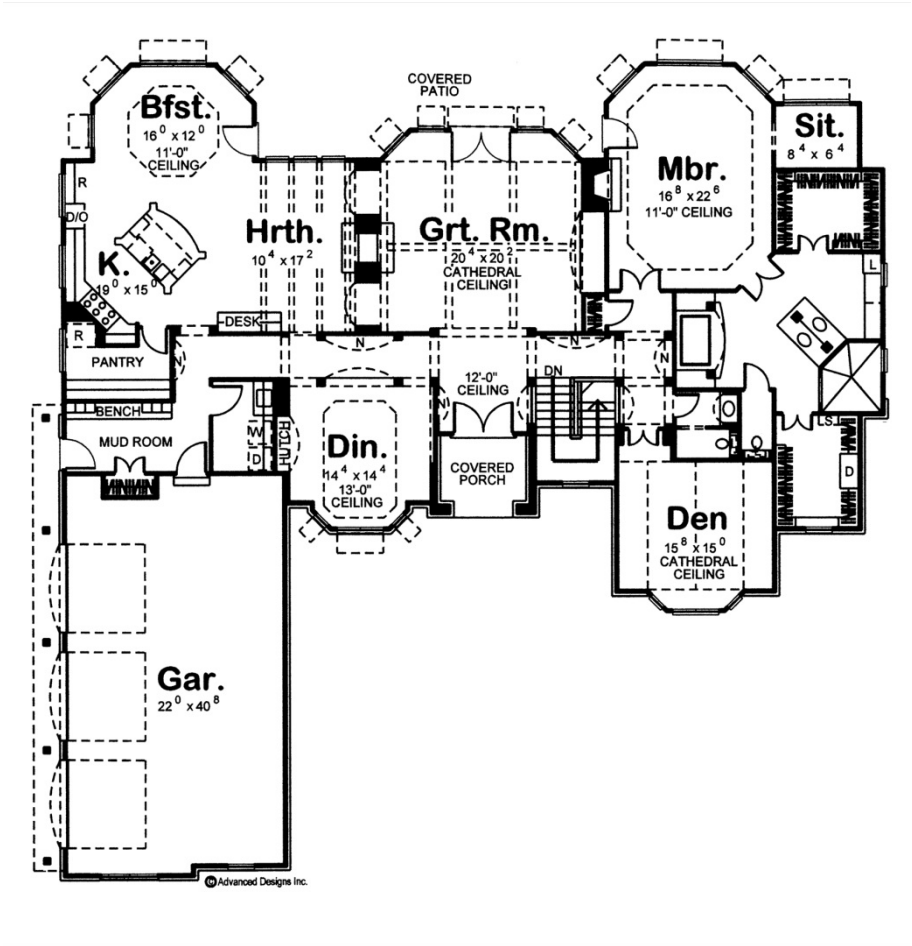




29179 - Brendel Data Sheet

3365 SQ FT	1 BEDS	2 BATHS	3 BAYS	86' 0" WIDE	83' 0" DEEP
---------------	-----------	------------	-----------	----------------	----------------



Construction Specs

Layout

Bedrooms

Bathrooms	2
Garage Bays	3
<b>Square Footage</b>	
Main Level	3365 Sq. Ft.
Garage	920 Sq. Ft.
Total Finished Area	3365 Sq. Ft.
<b>Exterior Dimensions</b>	
Width	86' 0"
Depth	83' 0"
Ridge Height	29' 0"
<i>Calculated from main floor line</i>	
<b>Default Construction Stats</b>	
<i>Stats are unique to the individual plan.</i>	
Foundation Type	Basement
Exterior Wall Construction	2x4
Roof Pitches	8/12 Primary, 12/12 Secondary
Foundation Wall Height	9'
Main Wall Height	10'

## Plan Description

Classic French Country details dress the exterior of this 3,365 sq. ft., 1-story, 1- bedroom house plan. Double doors invite guests inside, where they are greeted by immediate views into the great room, with high transom windows and a see-thru fireplace beneath a box-beamed cathedral ceiling. Adjacent to the entry, a formal dining room is brightened by an array of sunny bayed windows and includes a built-in hutch. Across from the dining room, beyond one of two display niches in the hallway, the hearth room enjoys the other side of the great room's see-thru fireplace. Perfect for casual gatherings, the hearth room lies open to the kitchen and breakfast area. The breakfast area is surrounded by views to the outdoors and lies beneath an 11-foot-high octagonal ceiling. The kitchen enjoys ample counter space, an island workspace with breakfast bar, built-in desk, and a walk-in pantry. Just off the kitchen, a utility area includes a laundry room and mud room with built-in benches and a handy coat closet. The mud room acts as a buffer between the home's living spaces and its 3-car garage. On the other side of the residence, a secluded den is found near an equally private master suite. The suite's bedroom is warmed by its own fireplace and features an adjacent sitting room. The bath offers pampering amenities such as his and her vanities, expansive shower, soaking tub and his and her walk-in closets – one of which that includes a built-in dresser.