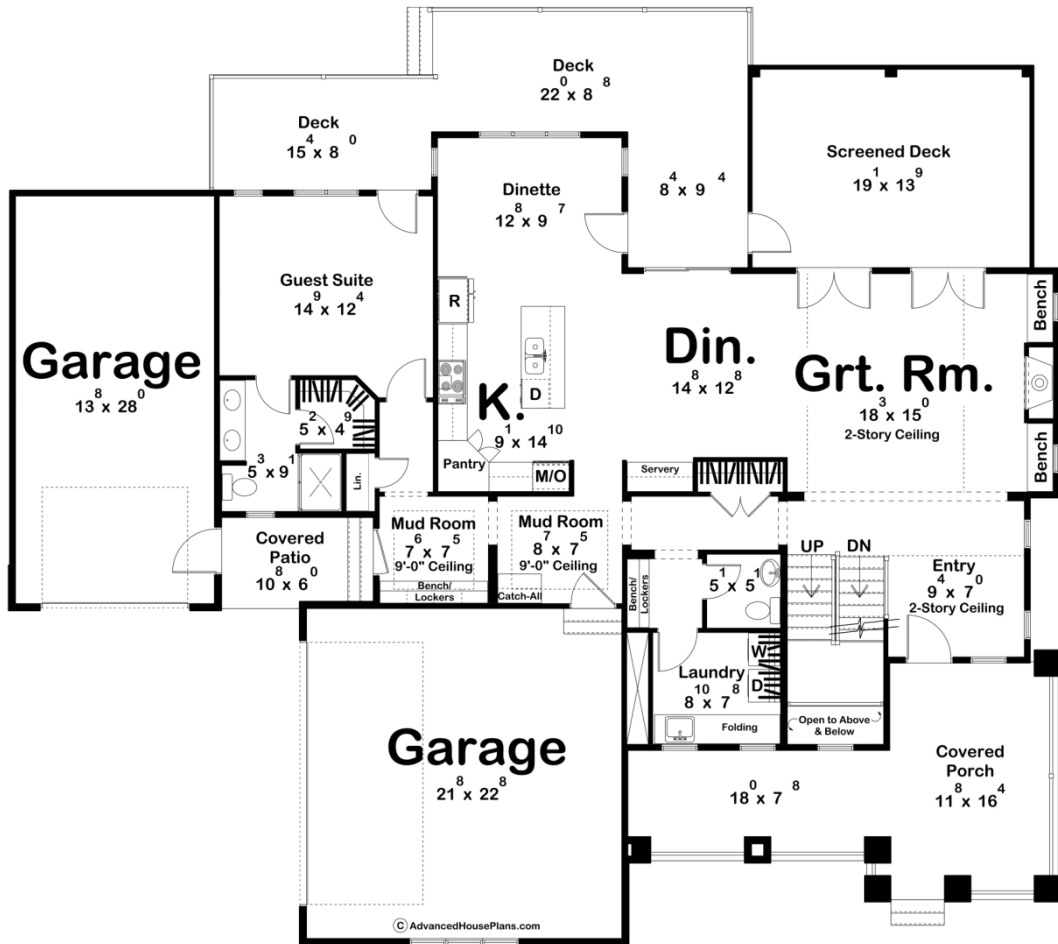
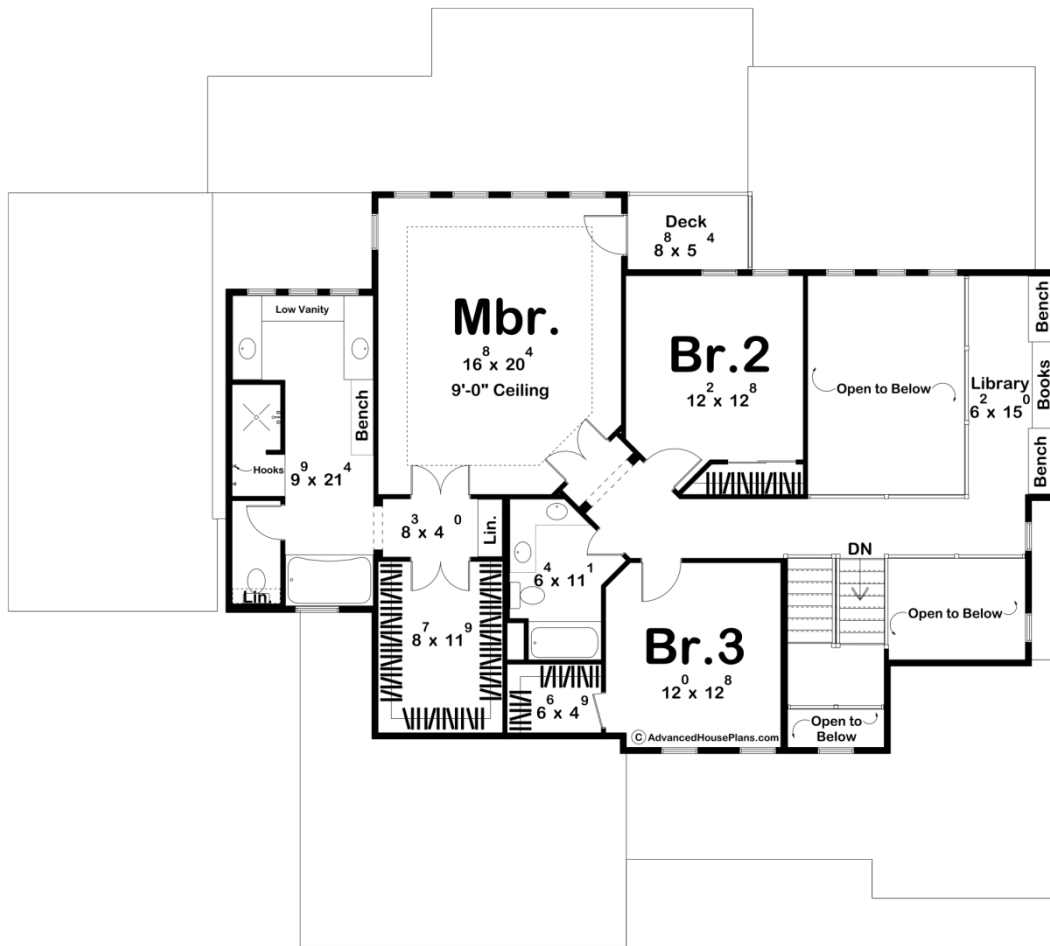




**29196 - Brekinridge Data Sheet**

3114 SQ FT	3 BEDS	4 BATHS	2 BAYS	72' 0" WIDE	61' 0" DEEP
---------------	-----------	------------	-----------	----------------	----------------





## Construction Specs

### Layout

Bedrooms	3
Bathrooms	4
Garage Bays	2

### Square Footage

Main Level	1690 Sq. Ft.
Second Level	1424 Sq. Ft.
Garage	920 Sq. Ft.
Total Finished Area	3114 Sq. Ft.

### Exterior Dimensions

Width	72' 0"
Depth	61' 0"

### Default Construction Stats

*Stats are unique to the individual plan.*

Foundation Type	Basement
-----------------	----------

Exterior Wall Construction	2x4
Foundation Wall Height	9'
Main Wall Height	9'
Second Wall Height	8'

## Plan Description

A seemingly endless array of enticing amenities are found in this 2-story, Craftsman-style house plan. A deep, covered front porch greets guests, who upon entering the home, are treated to views of the great room from a two-story-high entry hall. The great room captivates its occupants with a fireplace that is flanked by built-in seats and bookshelves, a soaring two-story-high ceiling and direct access to a screened porch that expands entertaining options to the outside. A rear deck is accessed from the dining area for outdoor dining or simply relaxing. The kitchen, with breakfast island workspace and walk-in pantry, accesses a fabulously practical utility area that includes a mudroom with bench and lockers, a powder bath -- adjacent to additional benches and lockers -- and a generously sized laundry with ample counter space and soaking sink. Adjacent to the kitchen is a "mother-in-law suite" with its own entrance from a covered porch. This private suite accesses the rear deck, and includes a bath with shower and walk-in closet. Flanking the suite's covered porch are two garage areas -- a single-car garage to the side and a two-car garage to the front. On the second level, a sprawling master suite with its own private deck, features a large walk-in closet, linen closet and pampering bath with his and her vanities, shower, soaking tub and shower. Bedrooms 2 and 3 share a centrally located hall bath with dual sinks. A few steps down the hall lead to the library with built-in window seats and views to the great room below.