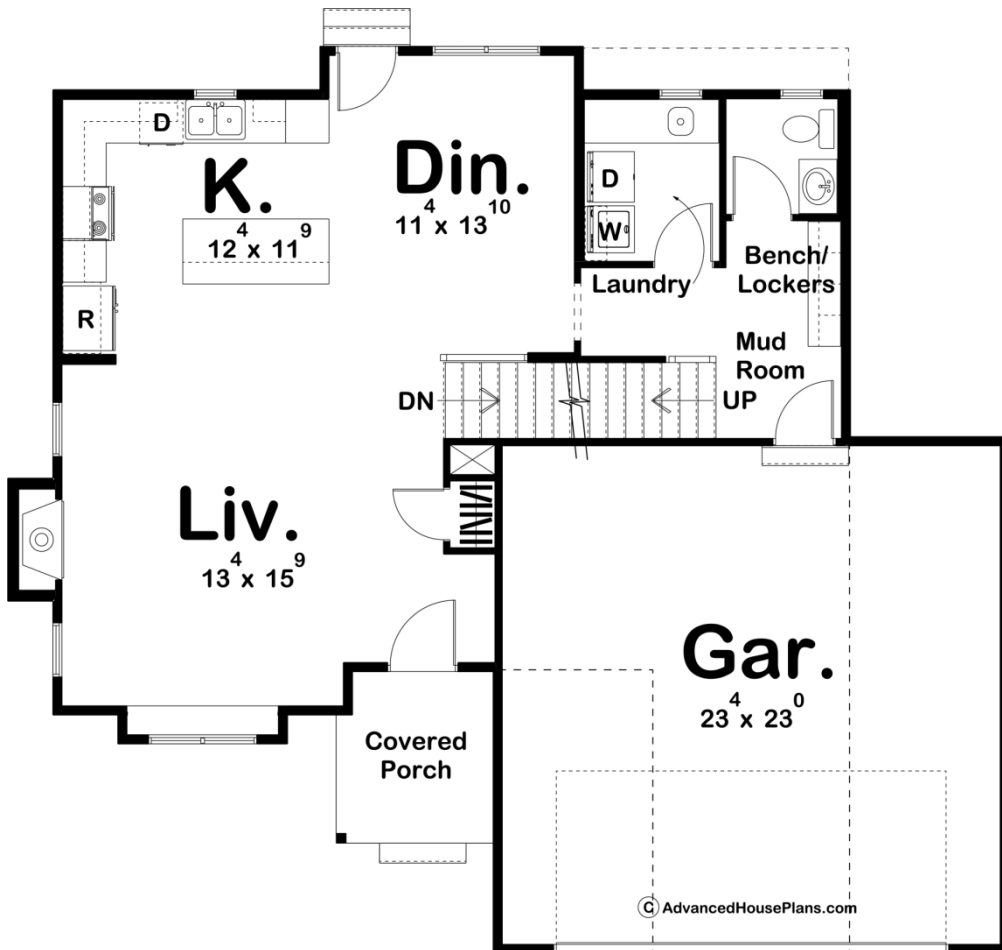
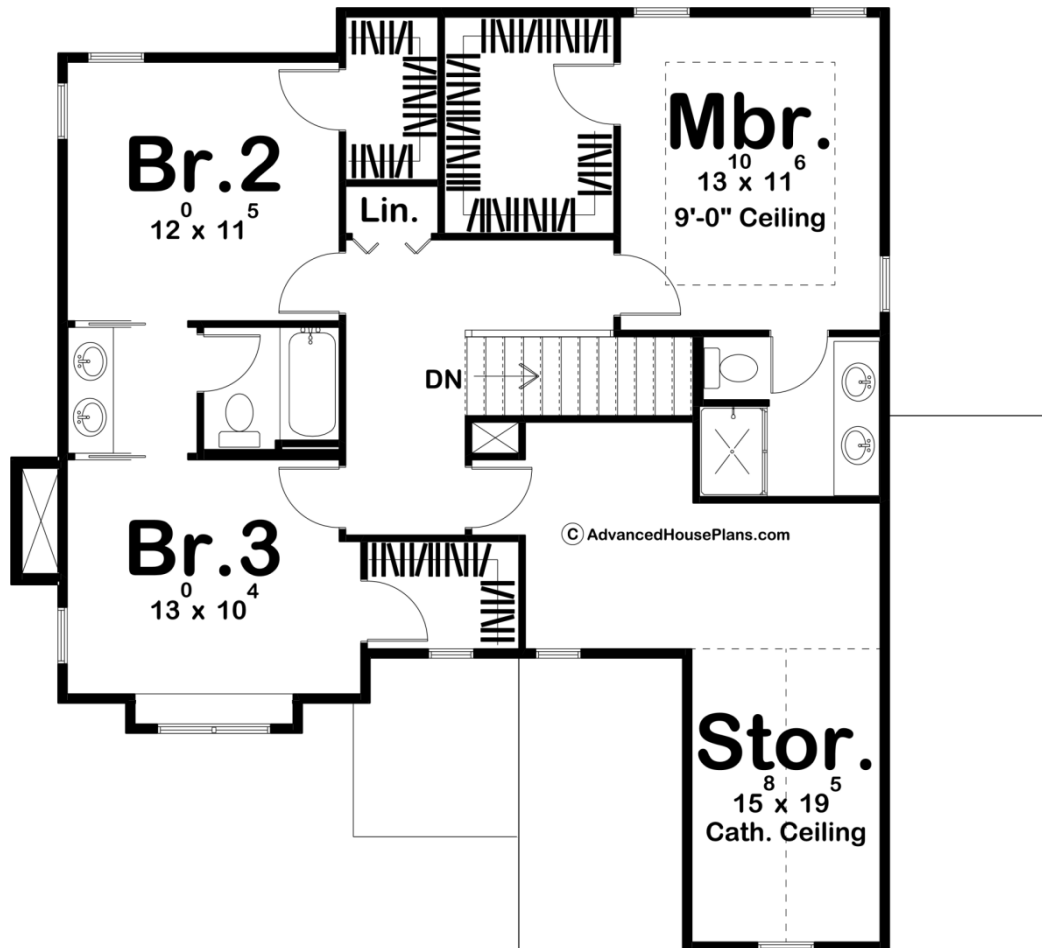




**29703 - Bradley Farms Data Sheet**

1753 SQ FT	3 BEDS	3 BATHS	2 BAYS	46' 0" WIDE	41' 8" DEEP
---------------	-----------	------------	-----------	----------------	----------------





## Construction Specs

### Layout

Bedrooms	3
Bathrooms	3
Garage Bays	2

### Square Footage

Main Level	885 Sq. Ft.
Second Level	868 Sq. Ft.
Garage	557 Sq. Ft.
Total Finished Area	1753 Sq. Ft.

### Exterior Dimensions

Width	46' 0"
Depth	41' 8"

### Default Construction Stats

*Stats are unique to the individual plan.*

Foundation Type	Basement
-----------------	----------

Exterior Wall Construction	2x4
Roof Pitches	6/12 Primary, 6/12 4/12 Secondary
Foundation Wall Height	9'
Main Wall Height	9'
Second Wall Height	8'

## Plan Description

The appearance of this family-friendly, Modern Farmhouse style, 2-story house plan imparts a sense of solidity and simpler times. Inside from the covered front porch, guests are received into the openly defined living room with its warming fireplace. A few steps farther in reveal the island kitchen and adjacent dining area with access to the outdoors. A utility area hosts the staircase to the upper level and includes a laundry room, powder bath and mudroom with a built-in bench -- which accesses the 2-car garage. Upstairs, the master suite is separated from the secondary bedrooms for privacy. The master bath includes a walk-in shower, along with a sizeable walk-in closet. Bedrooms 2 and 3 share a jack and jill bath. Across from bedroom 3, an unfinished storage area adds the potential of 260 sq. ft. of usable space, where the possibilities are endless.