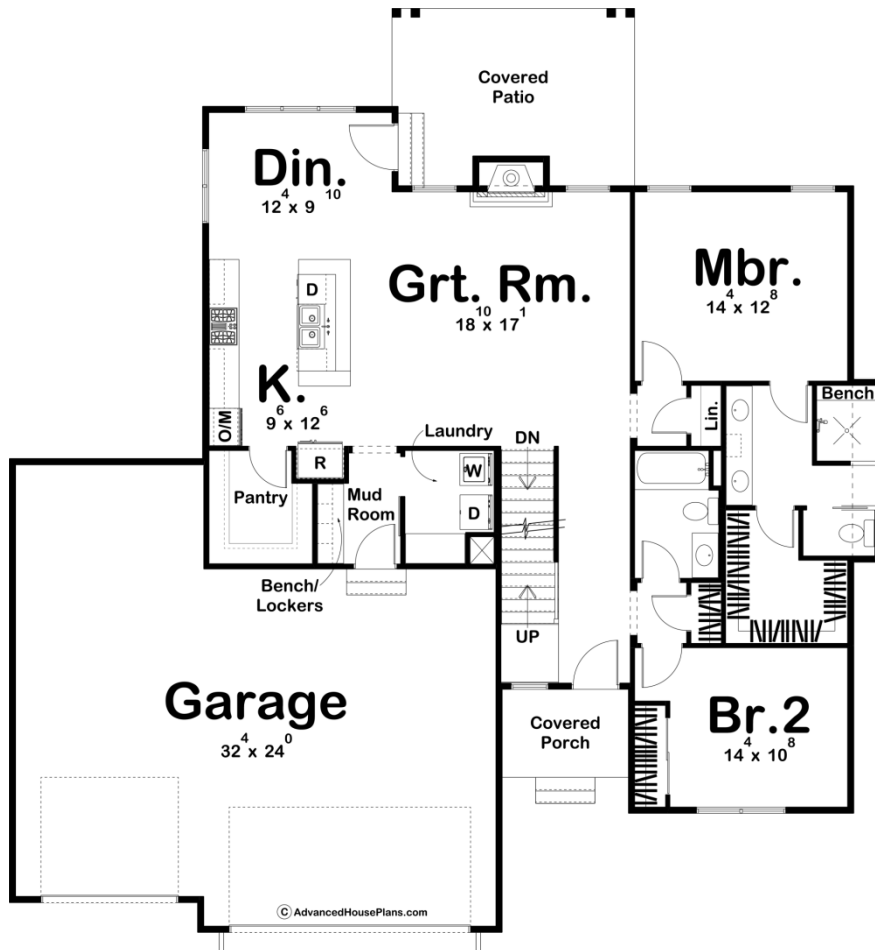
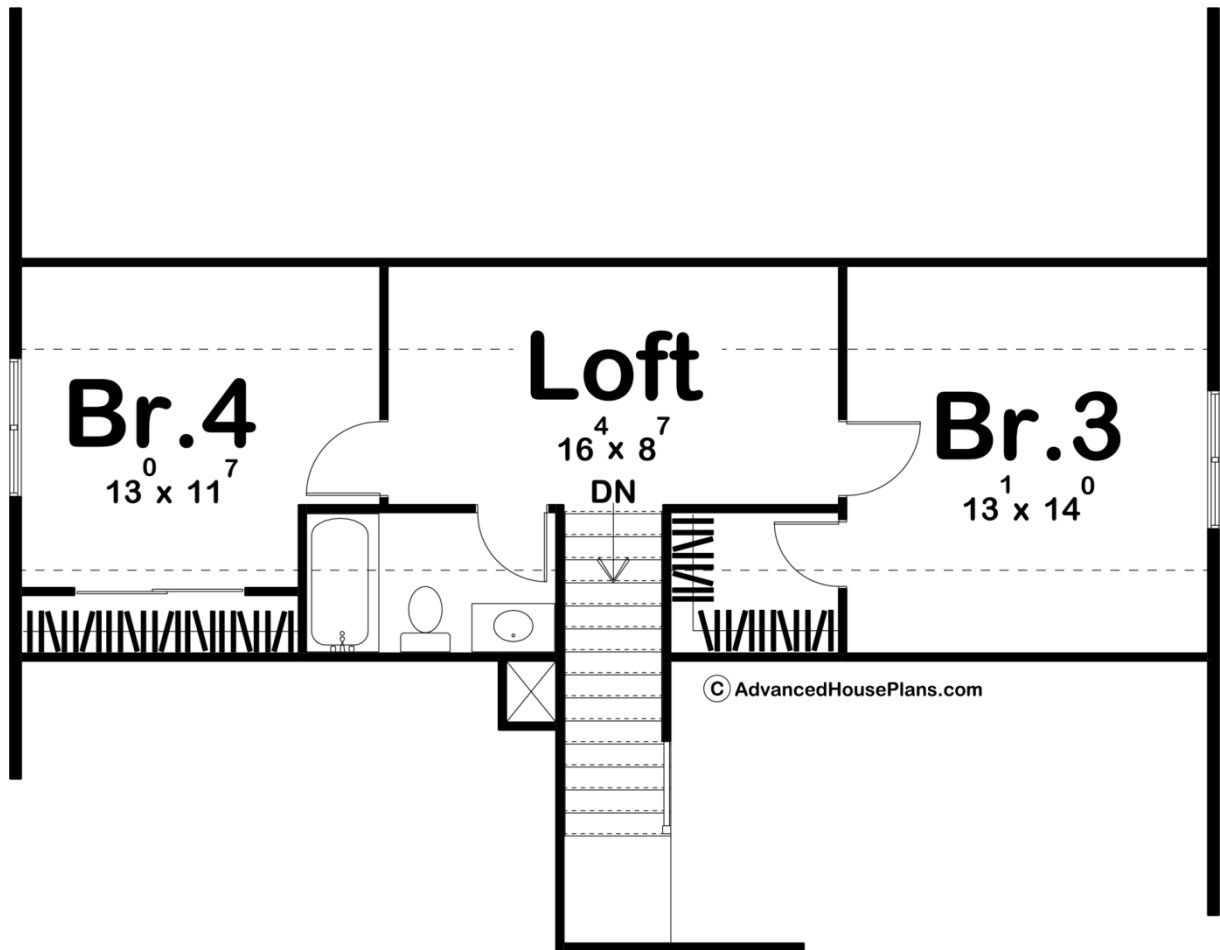




**29697 - Blair Data Sheet**

2148 SQ FT	4 BEDS	3 BATHS	3 BAYS	59' 0" WIDE	62' 0" DEEP
---------------	-----------	------------	-----------	----------------	----------------





## Construction Specs

### Layout

Bedrooms	4
Bathrooms	3
Garage Bays	3

### Square Footage

Main Level	1531 Sq. Ft.
Second Level	617 Sq. Ft.
Garage	870 Sq. Ft.
Total Finished Area	2148 Sq. Ft.

### Exterior Dimensions

Width	59' 0"
Depth	62' 0"

### Default Construction Stats

*Stats are unique to the individual plan.*

Foundation Type	Basement
-----------------	----------

Exterior Wall Construction	2x4
Roof Pitches	8/12 Primary, 9/12 Secondary
Foundation Wall Height	9'
Main Wall Height	9'

## Plan Description

A covered front porch and board and batten siding establish a sense of comfort on this 2148 sq. ft., 1.5-story house plan. Inside, a few steps bring guests into the great room, with its fireplace, views to the rear and boundary-defining cathedral ceiling. The kitchen and dinette lie open to the great room for comfortable entertaining. The kitchen itself is well-appointed, with an island work station with a snack bar and shelves and a walk-in pantry. The dinette has access to a covered patio off the rear of the home. Just off the kitchen, a mud room with bench and lockers accesses the home's 3-car, front-load garage. The master suite resides on the other side of the home and is tucked away for privacy. Its bath area features his-and-her vanities, a compartmented toilet, and a sizeable walk-in closet. Bedrooms 2 and 3 are upstairs separated from the master suite for privacy. Both secondary bedrooms share a central hall bath. There is also a loft that is great for a kids space upstairs.