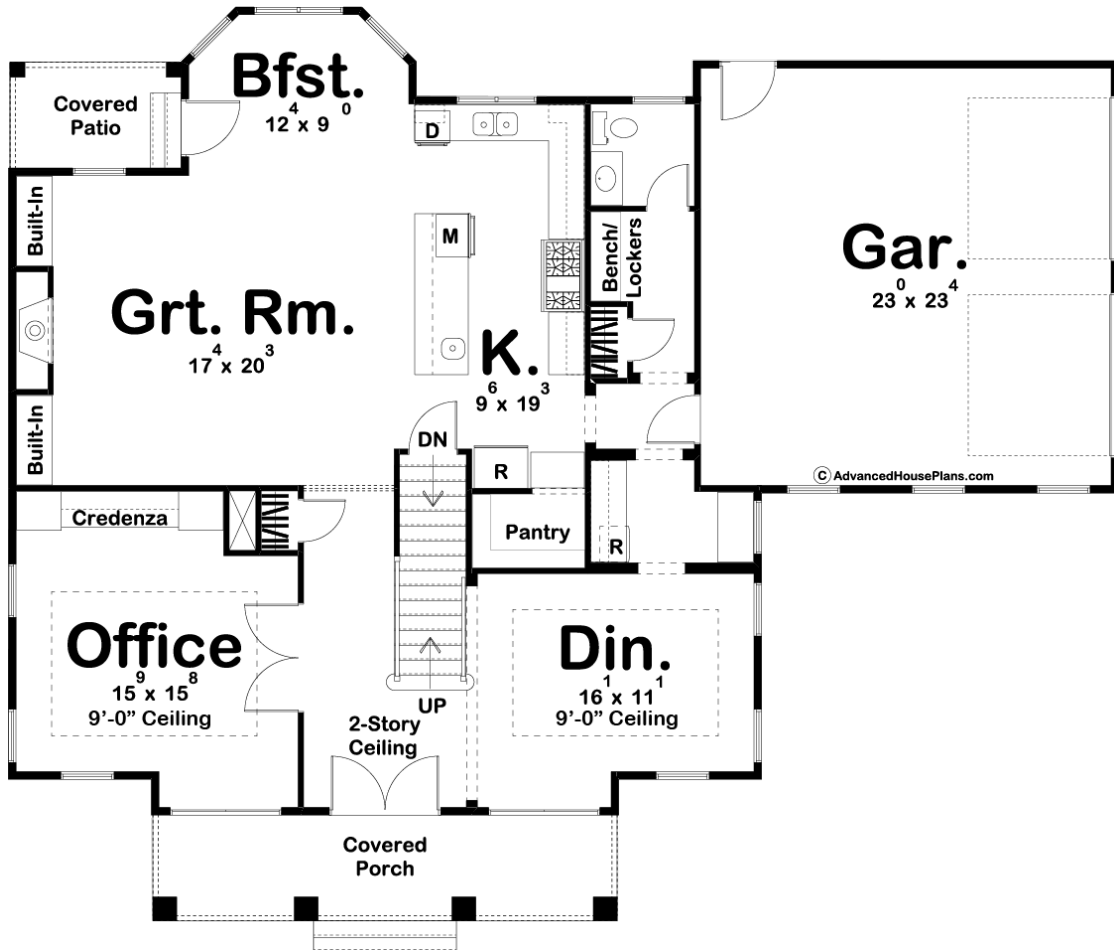
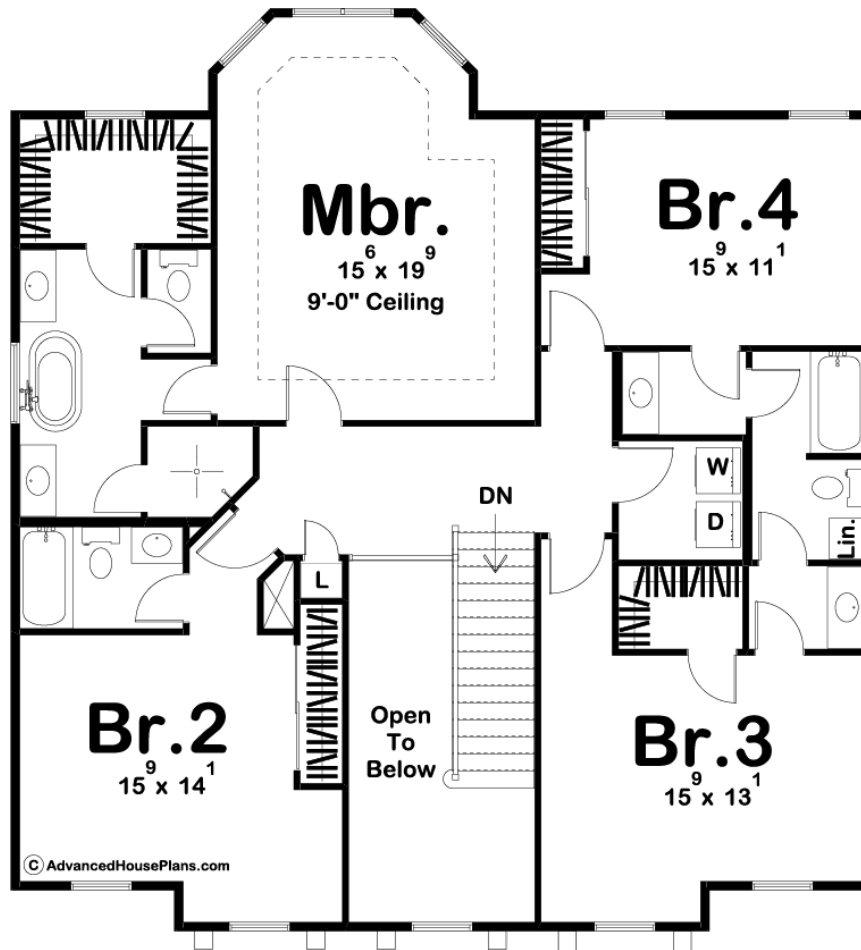




29800 - Birmingham Data Sheet

| | | | | | |
|---------------|-----------|------------|-----------|----------------|----------------|
| 3121 SQ FT | 4 BEDS | 4 BATHS | 2 BAYS | 62' 0" WIDE | 51' 0" DEEP |
|---------------|-----------|------------|-----------|----------------|----------------|





Construction Specs

Layout

| | |
|-------------|---|
| Bedrooms | 4 |
| Bathrooms | 4 |
| Garage Bays | 2 |

Square Footage

| | |
|---------------------|--------------|
| Main Level | 1588 Sq. Ft. |
| Second Level | 1533 Sq. Ft. |
| Garage | 560 Sq. Ft. |
| Total Finished Area | 3121 Sq. Ft. |

Exterior Dimensions

| | |
|--|--------|
| Width | 62' 0" |
| Depth | 51' 0" |
| Ridge Height | 30' 0" |
| <i>Calculated from main floor line</i> | |

Default Construction Stats

Stats are unique to the individual plan.

| | |
|----------------------------|-------------------------------|
| Foundation Type | Basement |
| Exterior Wall Construction | 2x4 |
| Roof Pitches | 6/12 Primary, 12/12 Secondary |
| Foundation Wall Height | 9' |
| Main Wall Height | 9' |
| Second Wall Height | 8' |

Plan Description

The Birmingham house will blow you away with its southern charm. The exterior is where the charm starts with its trio of gables and a large front covered porch. As you enter the home you will be greeted by a stunning 2 story entry. To the right of the entry you will find a formal dining room with a tray ceiling. On the other side of the entry you will find a wonderful office with a built-in credenza. Farther into the home, the great room is warmed by a fireplace that is flanked by built-in bookshelves. The large kitchen includes a walk-in pantry and a large island. A breakfast nook accesses a covered patio off the rear of the home. Upstairs you will find the bedrooms. The massive master suite includes his/her vanities, a soaking tub, a walk-in shower, an enclosed toilet, and a walk-in closet. Bedroom 2 has access to its own bathroom while bedrooms 3 and 4 share a jack and jill bathroom. Back on the main floor, the home's 2 car side load garage accesses the home through a convenient mudroom with a bench and lockers.