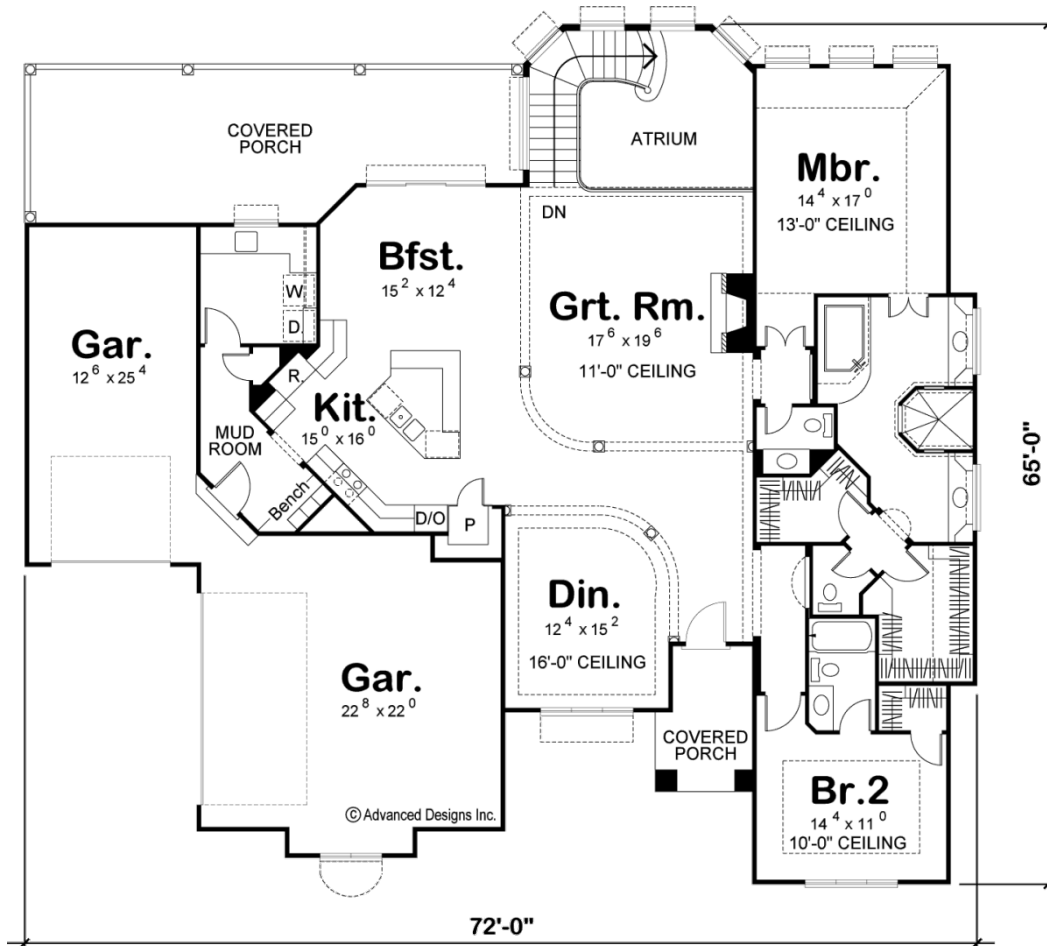




**29247 - Berkeley Data Sheet**

2490 SQ FT	4 BEDS	4 BATHS	3 BAYS	72' 0" WIDE	65' 0" DEEP
---------------	-----------	------------	-----------	----------------	----------------



**Construction Specs**

Layout

Bedrooms

Bathrooms	4
Garage Bays	3
<b>Square Footage</b>	
Main Level	2490 Sq. Ft.
Garage	930 Sq. Ft.
Total Finished Area	2490 Sq. Ft.
<b>Exterior Dimensions</b>	
Width	72' 0"
Depth	65' 0"
Ridge Height	34'
<i>Calculated from main floor line</i>	
<b>Default Construction Stats</b>	
<i>Stats are unique to the individual plan.</i>	
Foundation Type	Basement
Exterior Wall Construction	2x4
Roof Pitches	6/12
Foundation Wall Height	10'
Main Wall Height	9'

## Plan Description

A surprising amount of finished space awaits inside this luxuriously appointed Mediterranean style 1-story house plan. From the entry area, ceiling details and columns gracefully dance to define airy boundaries of the formal dining room and great room. This entire area interacts seamlessly with the breakfast area and kitchen. The kitchen features ample counter space and a large island work space with breakfast bar. The breakfast area accesses a sprawling rear covered porch for easy outdoor dining. Just off the kitchen, a utility area includes a laundry room with counter and soaking sink and a mud room that accesses both garage areas -- a 1-car and a 2-car garage. A stunning master suite lies secluded from the main living area. The bath area features his and her vanities on either side of a curved tub showcased beneath special ceiling details. Also included: a walk-in shower; compartmented toilet; his and her walk-in closets. Bedroom 2 also resides on the main floor and enjoys a private bath and walk-in closet. Bedrooms 3 and 4 are located on the lower level and share a Jack-n-Jill bath. Both lower-level bedrooms have walk-in closets.