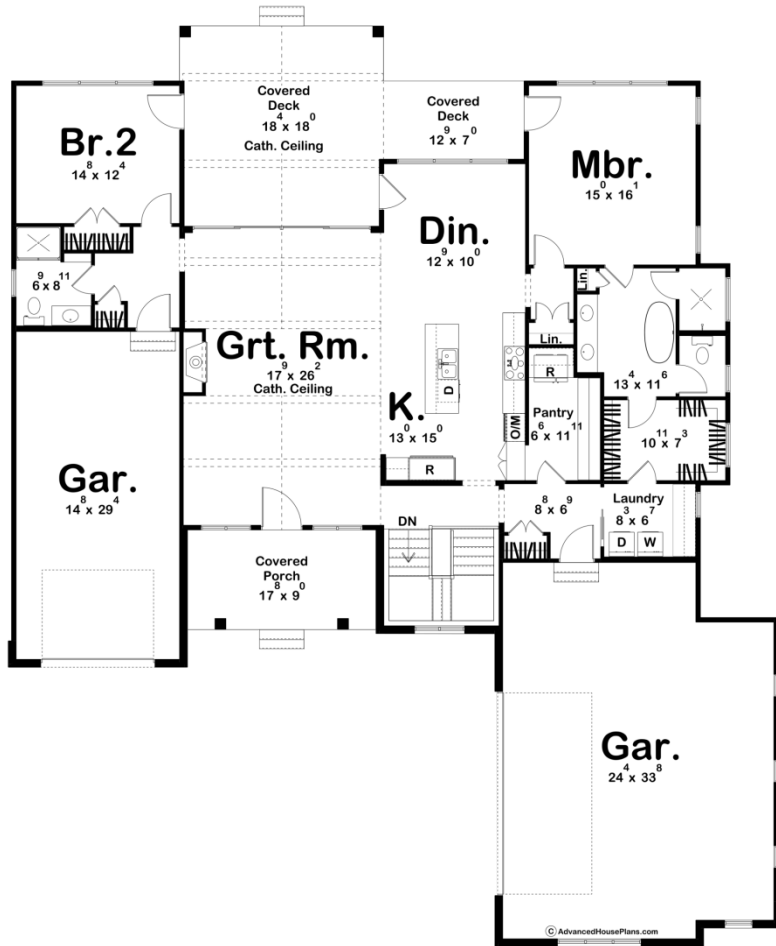
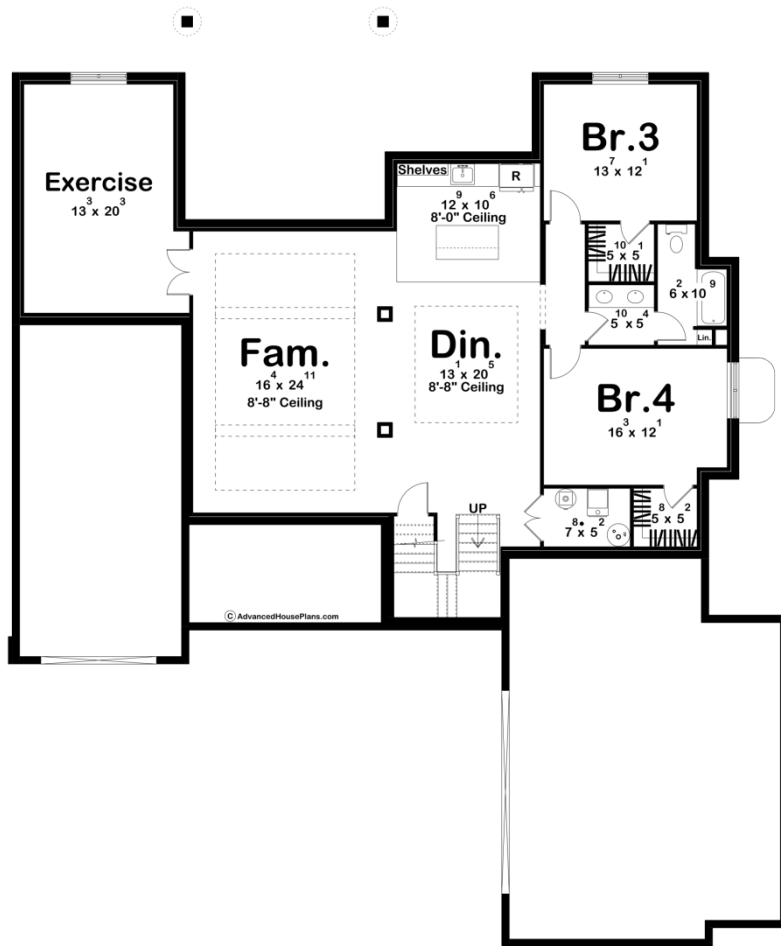




**30219 - Bergman Data Sheet**

|               |           |            |           |                |                |
|---------------|-----------|------------|-----------|----------------|----------------|
| 2078<br>SQ FT | 2<br>BEDS | 2<br>BATHS | 3<br>BAYS | 68' 8"<br>WIDE | 82' 0"<br>DEEP |
|---------------|-----------|------------|-----------|----------------|----------------|





## Construction Specs

### Layout

|             |   |
|-------------|---|
| Bedrooms    | 2 |
| Bathrooms   | 2 |
| Garage Bays | 3 |

### Square Footage

|                     |              |
|---------------------|--------------|
| Main Level          | 2078 Sq. Ft. |
| Covered Area        | 571 Sq. Ft.  |
| Garage              | 1250 Sq. Ft. |
| Total Finished Area | 2078 Sq. Ft. |

### Exterior Dimensions

|       |        |
|-------|--------|
| Width | 68' 8" |
| Depth | 82' 0" |

### Default Construction Stats

*Stats are unique to the individual plan.*

|                 |          |
|-----------------|----------|
| Foundation Type | Basement |
|-----------------|----------|

|                            |   |
|----------------------------|---|
| Exterior Wall Construction | 2x4   |
| Roof Pitches               | Primary 10/12, Secondary 4/12, 5/12, 6/12 8,/12 |
| Foundation Wall Height     | 9'  |
| Main Wall Height           | 10'   |

## Plan Description

Introducing the stunning design of a modern Craftsman-style house plan that exudes timeless elegance and functionality. This two-bedroom, two-bathroom home offers a seamless blend of classic architectural elements and contemporary features, creating a welcoming and comfortable living space for its occupants. As you approach the house, you are greeted by a charming exterior characterized by a combination of natural materials, such as stone and wood, and a welcoming covered entryway. The Craftsman-style details, including decorative brackets, shake siding, and carefully placed windows, add a sense of warmth and character to the facade. Upon entering, you'll find yourself in a spacious and open great room, the heart of the home. The soaring cathedral ceiling immediately captures your attention, with exposed beams running from one end to the other, adding a touch of rustic charm. Natural light pours in through large sliding doors, creating an airy and inviting atmosphere. The great room seamlessly connects to a covered deck, providing an ideal space for outdoor relaxation and entertaining. The kitchen is thoughtfully designed with both style and functionality in mind. It features high-quality cabinetry, sleek countertops, and modern appliances. A notable highlight of the kitchen is the walk-in pantry, providing ample storage space for all your culinary needs. The primary bedroom is a peaceful retreat, complete with an ensuite bathroom and a generous walk-in closet. The second bedroom is conveniently located near the second bathroom, ensuring privacy and comfort for all occupants. This house plan also boasts a practical layout with attached garages. There is a spacious two-car garage for your main vehicles, providing plenty of room for storage and easy access to the house. Additionally, a separate one-car garage offers flexibility for housing an additional vehicle, storage, or a workshop. With its blend of classic Craftsman elements and modern amenities, this house plan exemplifies the perfect balance between style and functionality. It offers a comfortable and welcoming environment, ideal for those seeking a home that celebrates the craftsmanship of the past while embracing the conveniences of modern living.