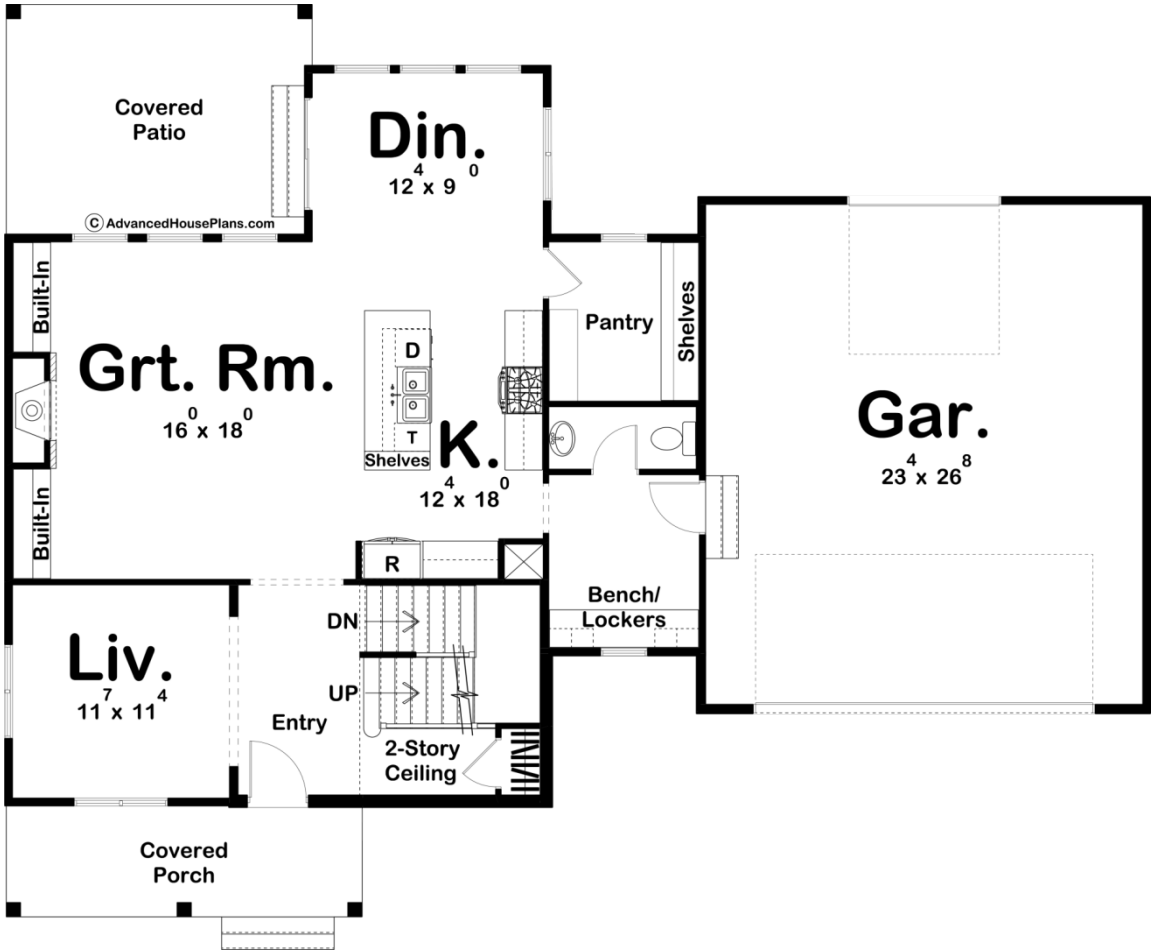
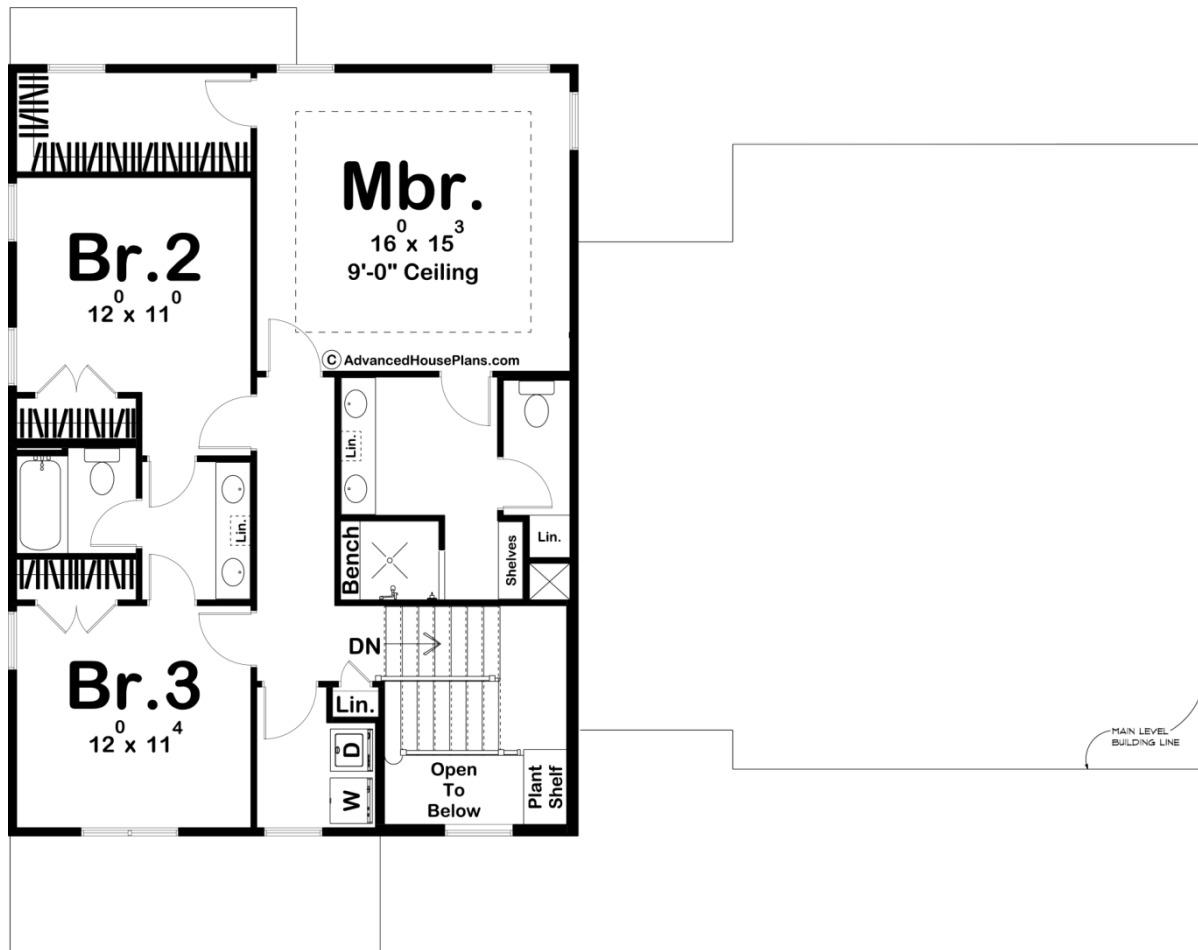




29925 - Belgrade Data Sheet

| | | | | | |
|---------------|-----------|------------|-----------|----------------|----------------|
| 2218 SQ FT | 3 BEDS | 3 BATHS | 2 BAYS | 61' 0" WIDE | 48' 8" DEEP |
|---------------|-----------|------------|-----------|----------------|----------------|





Construction Specs

Layout

| | |
|-------------|---|
| Bedrooms | 3 |
| Bathrooms | 3 |
| Garage Bays | 2 |

Square Footage

| | |
|---------------------|--------------|
| Main Level | 1183 Sq. Ft. |
| Second Level | 1035 Sq. Ft. |
| Covered Area | 312 Sq. Ft. |
| Garage | 648 Sq. Ft. |
| Total Finished Area | 2218 Sq. Ft. |

Exterior Dimensions

| | |
|-------|--------|
| Width | 61' 0" |
| Depth | 48' 8" |

Default Construction Stats

Stats are unique to the individual plan.

| | |
|----------------------------|--------------|
| Foundation Type | Basement |
| Exterior Wall Construction | 2x4 |
| Roof Pitches | 4/12 Primary |
| Foundation Wall Height | 9' |
| Main Wall Height | 9' |
| Second Wall Height | 8' |

Plan Description

The Belgrade is a Barndominium style 2 story house plan with a simple yet elegant exterior and a functional, simple floor plan. This home looks great from the street with its contrasting siding colors combined with wood and stone accents!The main floor of the Belgrade features a formal living room, open living spaces in the dining, kitchen, and great rooms, and a mudroom with some handy storage to keep your home free of clutter. There's a generously sized 2-car garage with a rear garage door that is perfect for your lawn equipment.The second floor is very efficient, with a spacious master suite. The master bath has his and her vanities, a walk-in shower, and an enclosed toilet. The walk-in closet is also well-sized. There's a jack and jill style bathroom to make sharing just a bit easier for the 2 secondary bedrooms. We've placed the laundry room upstairs too to save you from trips up and downstairs.