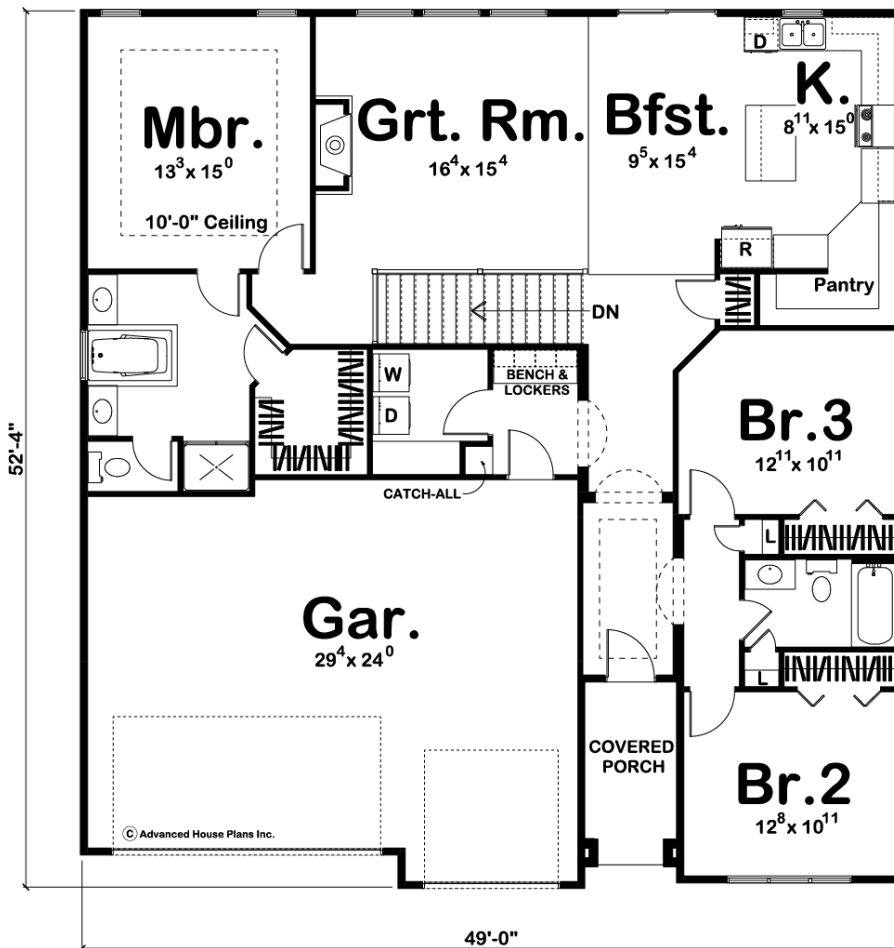




**29296 - Beechwood Data Sheet**

1774 SQ FT	3 BEDS	2 BATHS	3 BAYS	49' 0" WIDE	53' 0" DEEP
---------------	-----------	------------	-----------	----------------	----------------



**Construction Specs**

Layout

Bedrooms

Bathrooms	2
-----------	---

Garage Bays	3
-------------	---

### Square Footage

Main Level	1774 Sq. Ft.
------------	--------------

Garage	678 Sq. Ft.
--------	-------------

Total Finished Area	1774 Sq. Ft.
---------------------	--------------

### Exterior Dimensions

Width	49' 0"
-------	--------

Depth	53' 0"
-------	--------

Ridge Height	26' 0"
--------------	--------

*Calculated from main floor line*

### Default Construction Stats

*Stats are unique to the individual plan.*

Foundation Type	Basement
-----------------	----------

Exterior Wall Construction	2x4
----------------------------	-----

Roof Pitches	10/12 Primary 7/12 Secondary
--------------	------------------------------

Foundation Wall Height	9'
------------------------	----

Main Wall Height	9'
------------------	----

## Plan Description

A tasteful array of exterior textures complements the smart interior design of this Craftsman-style cottage house plan. A deep covered front porch leads guests inside, where an alcove just off the entry hall reveals two secondary bedrooms and a central bath. Further inside lies the kitchen, breakfast area and great room, which share one large, open space. The great room enjoys bright views to the rear through three large windows, and it warms the atmosphere with its cozy fireplace. The kitchen boasts an island work area, ample counter space, and a roomy walk-in pantry. The breakfast area accesses the rear through sliding glass doors. The master suite is secluded from the main living areas and enjoys private separation from the secondary bedrooms. The master bath features his-and-her vanities, separated by a soaking tub, a compartmented toilet, shower and a walk-in closet. The home's 3-car garage is accessed through a utility area which includes a laundry room and a mudroom, complete with bench, lockers and a handy catch-all area.