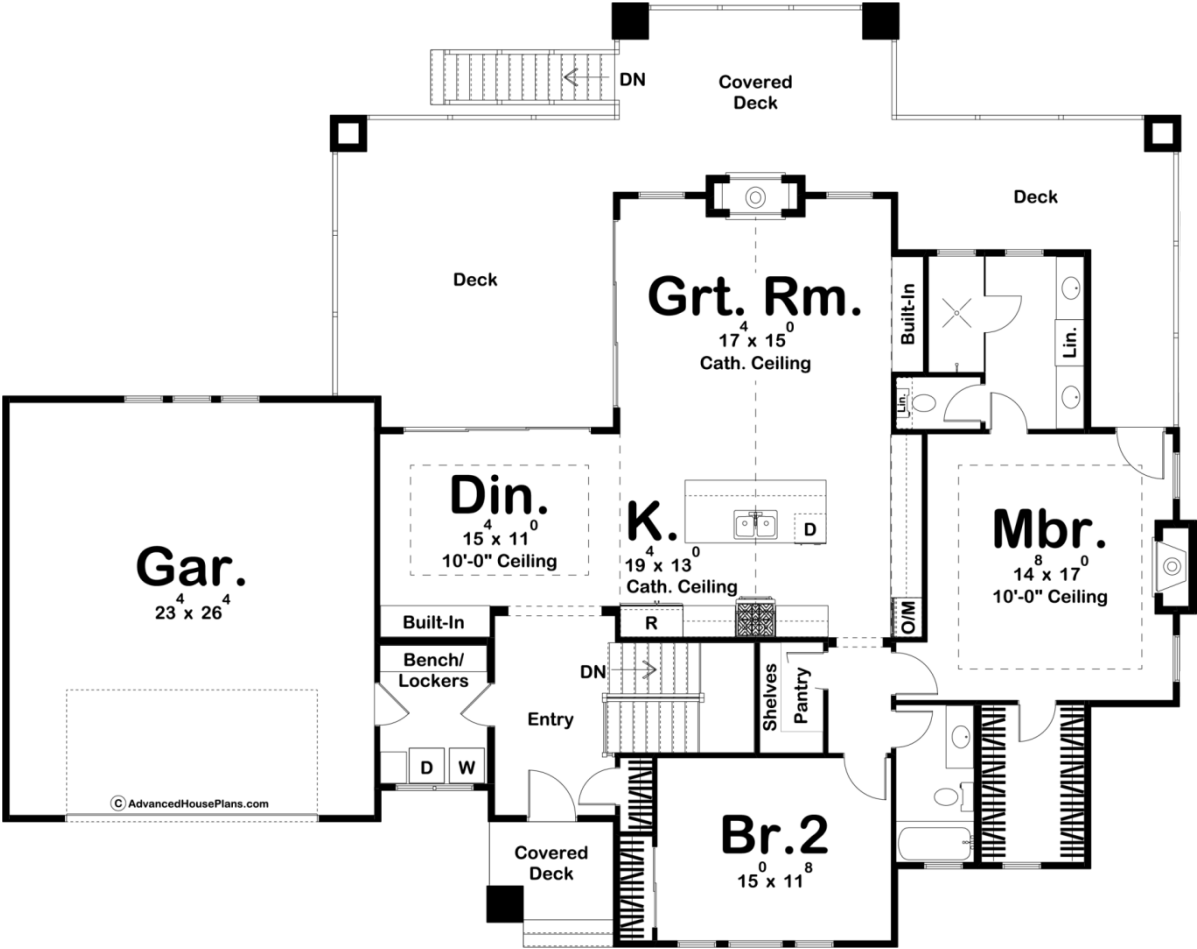
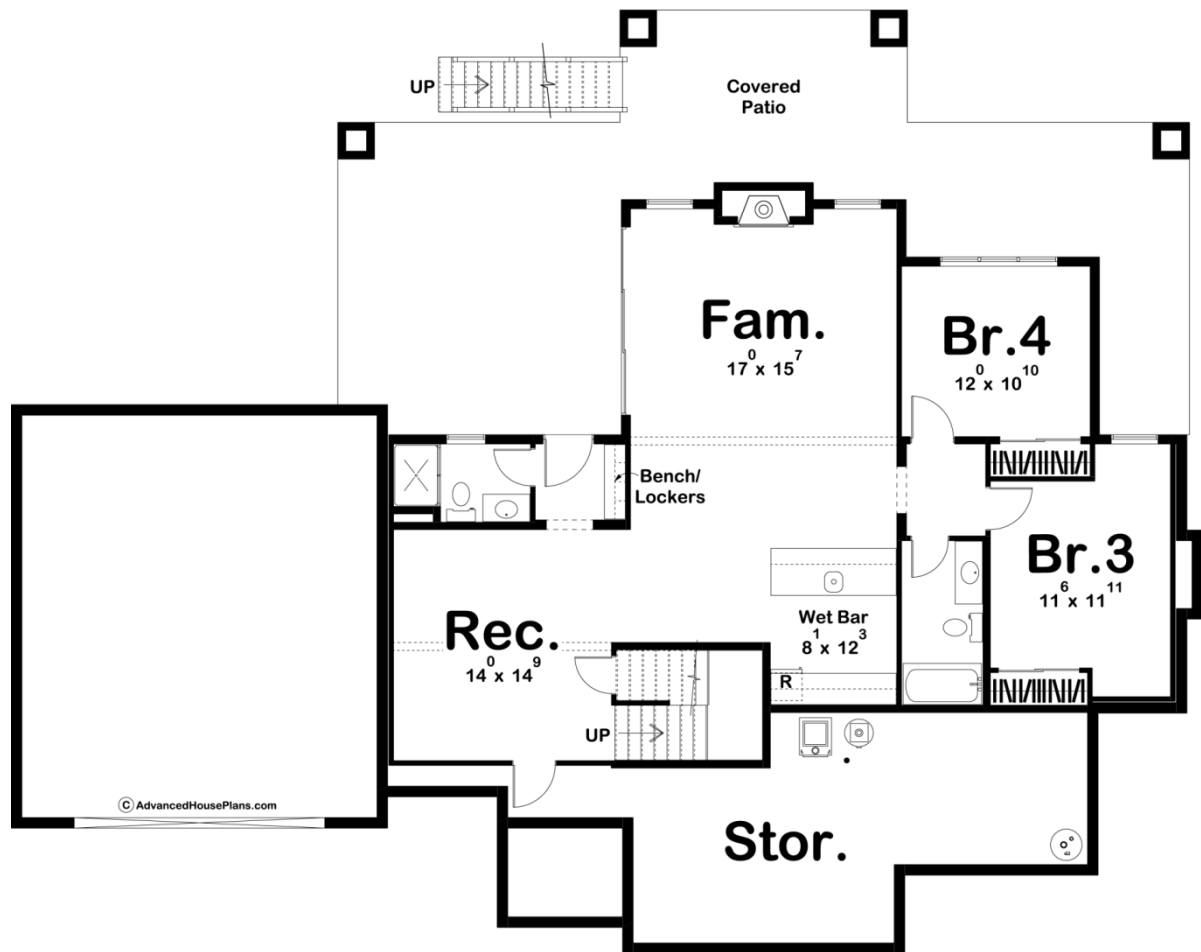




29958 - Bear Creek Data Sheet

| | | | | | |
|---------------|-----------|------------|-----------|----------------|----------------|
| 1803 SQ FT | 2 BEDS | 2 BATHS | 2 BAYS | 75' 0" WIDE | 60' 0" DEEP |
|---------------|-----------|------------|-----------|----------------|----------------|





Construction Specs

Layout

| | |
|-------------|---|
| Bedrooms | 2 |
| Bathrooms | 2 |
| Garage Bays | 2 |

Square Footage

| | |
|---------------------|--------------|
| Main Level | 1803 Sq. Ft. |
| Garage | 638 Sq. Ft. |
| Total Finished Area | 1803 Sq. Ft. |

Exterior Dimensions

| | |
|-------|--------|
| Width | 75' 0" |
| Depth | 60' 0" |

Default Construction Stats

Stats are unique to the individual plan.

| | |
|----------------------------|---------|
| Foundation Type | Walkout |
| Exterior Wall Construction | 2x4 |

| | |
|------------------------|---------------|
| Roof Pitches | 10/12 Primary |
| Foundation Wall Height | 9' |
| Main Wall Height | 9' |

Plan Description

This beautiful lake house has everything you need to get the most out of the lake living lifestyle. The charming exterior shake siding gives this home great curb appeal. Once you step inside the home, you'll find yourself in the entry way looking at the formal dining room that includes a built-in hutch. This home's kitchen and great room flow seamlessly in an open layout under a soaring cathedral ceiling. The kitchen includes a large island and a walk-in pantry. On the right side of the home, you'll find a magnificent master suite that includes its own fireplace, his/her vanities, a large walk-in shower, and a large walk-in closet. A second bedroom on the main level shares a bathroom with the homes main living areas. A large covered deck off the rear of the home is perfect for your outdoor entertainment needs. An optional finished basement adds 1292 sq ft and includes a rec room, a wet bar, 2 bedrooms, and an additional family room.