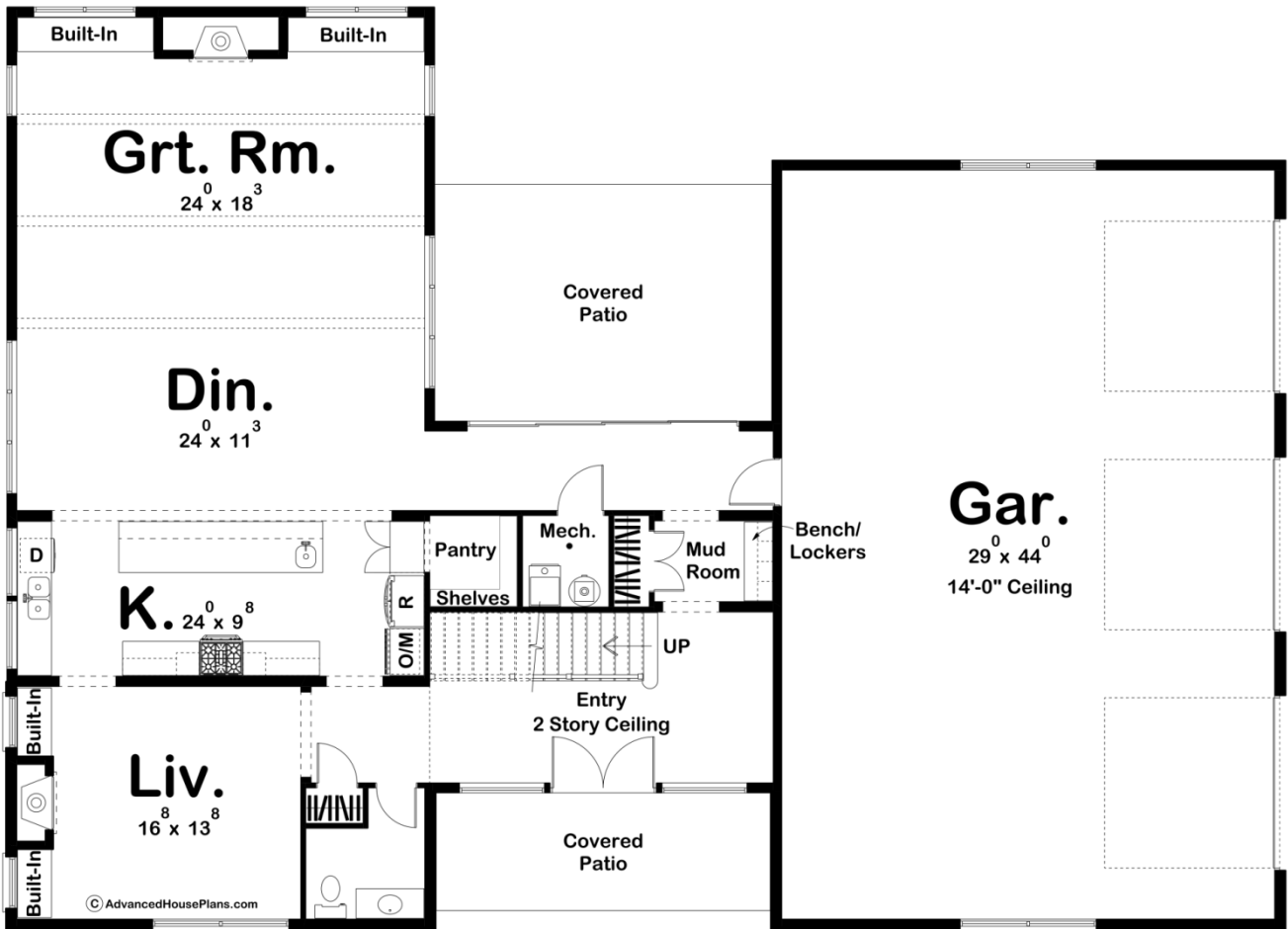
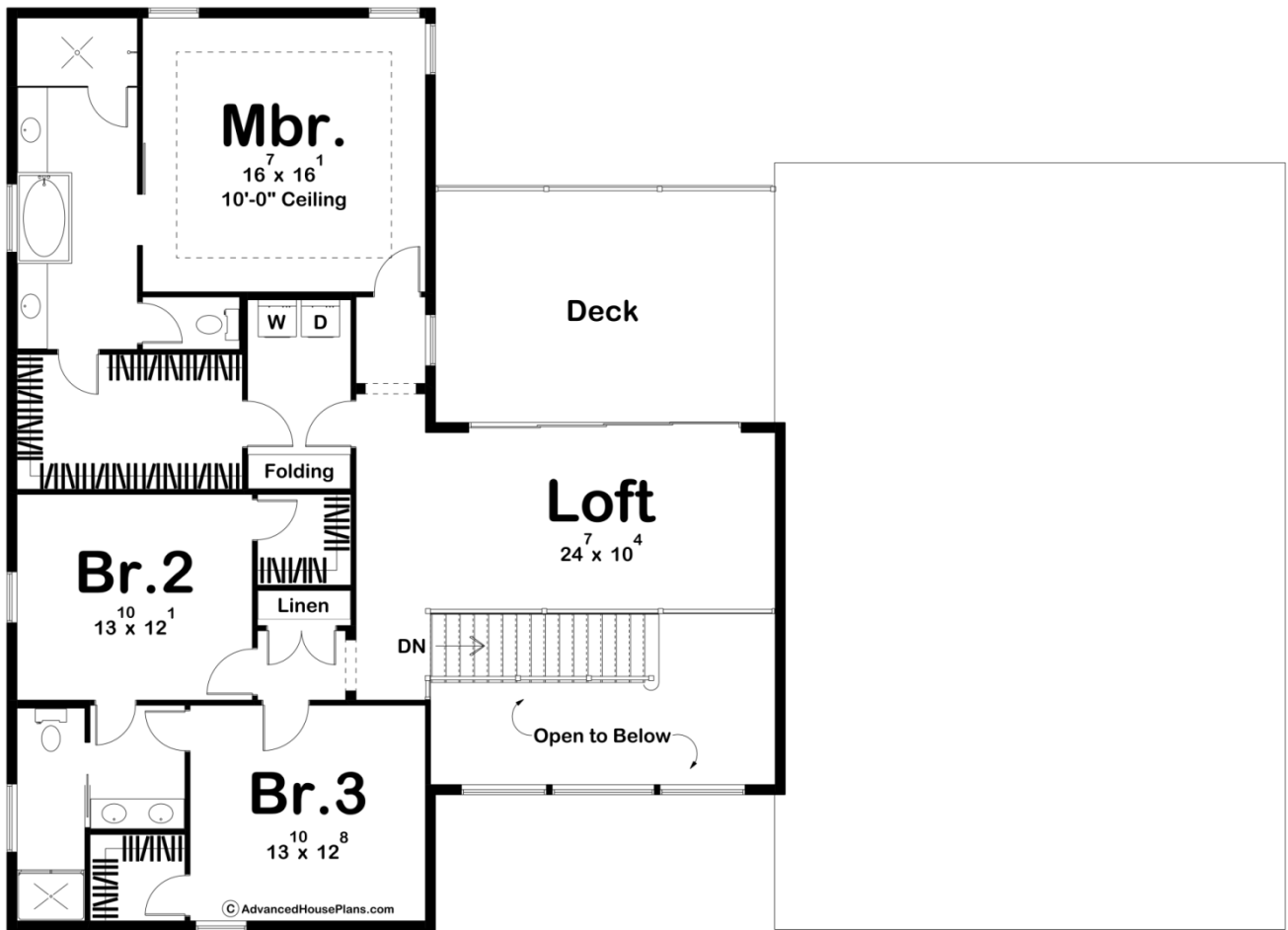




30169 - Barton Creek Data Sheet

3362 SQ FT	3 BEDS	3 BATHS	3 BAYS	75' 0" WIDE	54' 0" DEEP
---------------	-----------	------------	-----------	----------------	----------------





Construction Specs

Layout

Bedrooms	3
Bathrooms	3
Garage Bays	3

Square Footage

Main Level	1794 Sq. Ft.
Second Level	1568 Sq. Ft.
Covered Area	420 Sq. Ft.
Garage	1367 Sq. Ft.
Total Finished Area	3362 Sq. Ft.

Exterior Dimensions

Width	75' 0"
Depth	54' 0"
Ridge Height	31' 0"
<i>Calculated from main floor line</i>	

Default Construction Stats

Stats are unique to the individual plan.

Foundation Type	Slab
Exterior Wall Construction	2x6
Roof Pitches	6/12 Primary, 10/12 Secondary
Main Wall Height	9'
Second Wall Height	9'

Plan Description

The Barton Creek is an exciting Barndominium style house plan. The exterior showcases a beautiful array of windows mixed with board and batten siding and light-colored stone. A front covered porch invites guests into the grand entry that lies under a soaring 2-story ceiling. On the left side of the home, you'll find the kitchen, dining room, and great room all arranged in an open layout. The kitchen includes a large island with a prep sink and a walk-in pantry. The great room is warmed by a fireplace that is flanked by built-in bookshelves and lies under exposed wood beams. A formal living room has its own fireplace. On the second level, you'll find 3 bedrooms including an amazing master suite. The master bedroom features a decorative trayed ceiling. The master bathroom includes a soaking tub, his/her vanities, a walk-in shower, and a large walk-in closet. The master closet has convenient access to the home's laundry room. Bedrooms 2 and 3 share a jack and jill bathroom and each has its own walk-in closet. A wonderful loft has access to a large deck through a huge sliding glass door. Back on the main floor, the Barndominium homes oversized 3 car garage accesses the home through a convenient mud room with a bench and lockers.