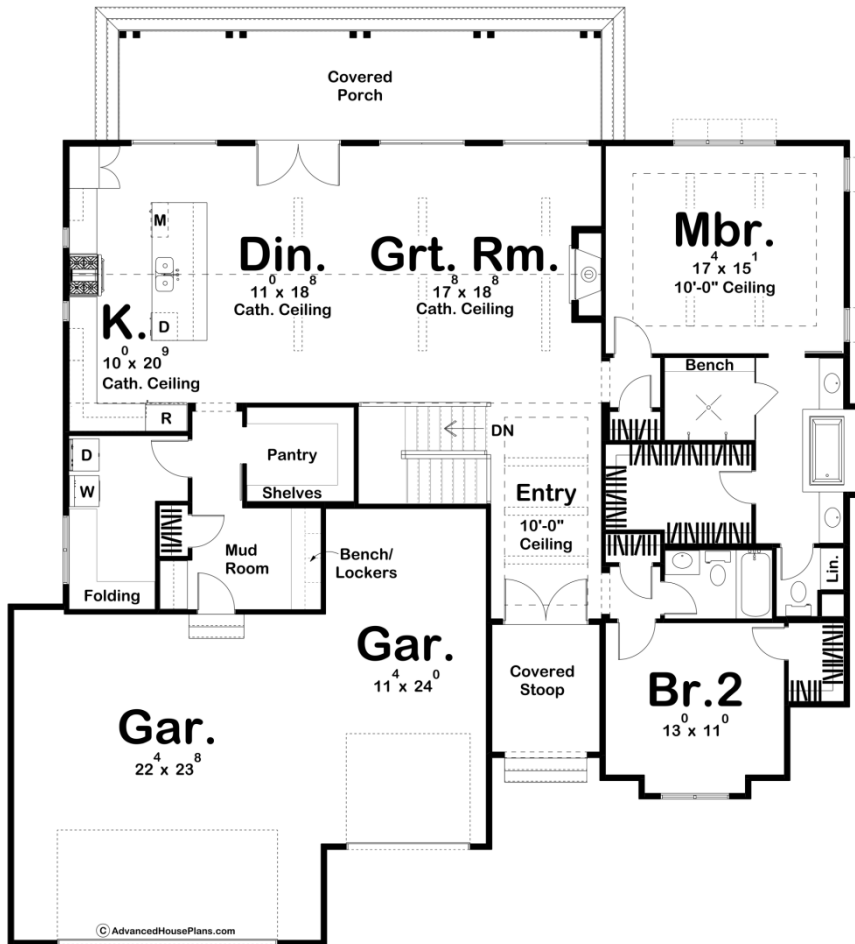




**30099 - Banner Hill Data Sheet**

2082 SQ FT	2 BEDS	2 BATHS	3 BAYS	62' 0" WIDE	67' 0" DEEP
---------------	-----------	------------	-----------	----------------	----------------



**Construction Specs**

**Layout**

Bedrooms

Bathrooms	2
Garage Bays	3

### Square Footage

Main Level	2082 Sq. Ft.
Covered Area	354 Sq. Ft.
Garage	866 Sq. Ft.
Total Finished Area	2082 Sq. Ft.

### Exterior Dimensions

Width	62' 0"
Depth	67' 0"
Ridge Height <i>Calculated from main floor line</i>	29'

### Default Construction Stats

*Stats are unique to the individual plan.*

Foundation Type	Basement
Exterior Wall Construction	2x4
Roof Pitches	10/12 Primary, 6/12 12/12 Secondary
Foundation Wall Height	9'
Main Wall Height	9'

## Plan Description

This beautifully configured Modern Farmhouse plan offers amenities that are usually found in much larger home designs. On the outside, board and batten siding and a covered porch put on a striking display of curb appeal. Just inside, you'll be amazed at the open floor plan including a magnificent Great Room, which is warmed by a fireplace and flows into a dining room and large kitchen. The kitchen boasts plenty of counter space in addition to the spacious island. Just beyond the dining area, a covered porch extends entertaining options. The master suite enjoys a luxurious bath, complete with compartmented toilet, walk-in shower, dual vanities, a soaking tub, and a large walk-in closet. On the other side of this house plan, the large 3 car garage accesses the home through a convenient mud room complete with a bench, lockers, and a catch-all.