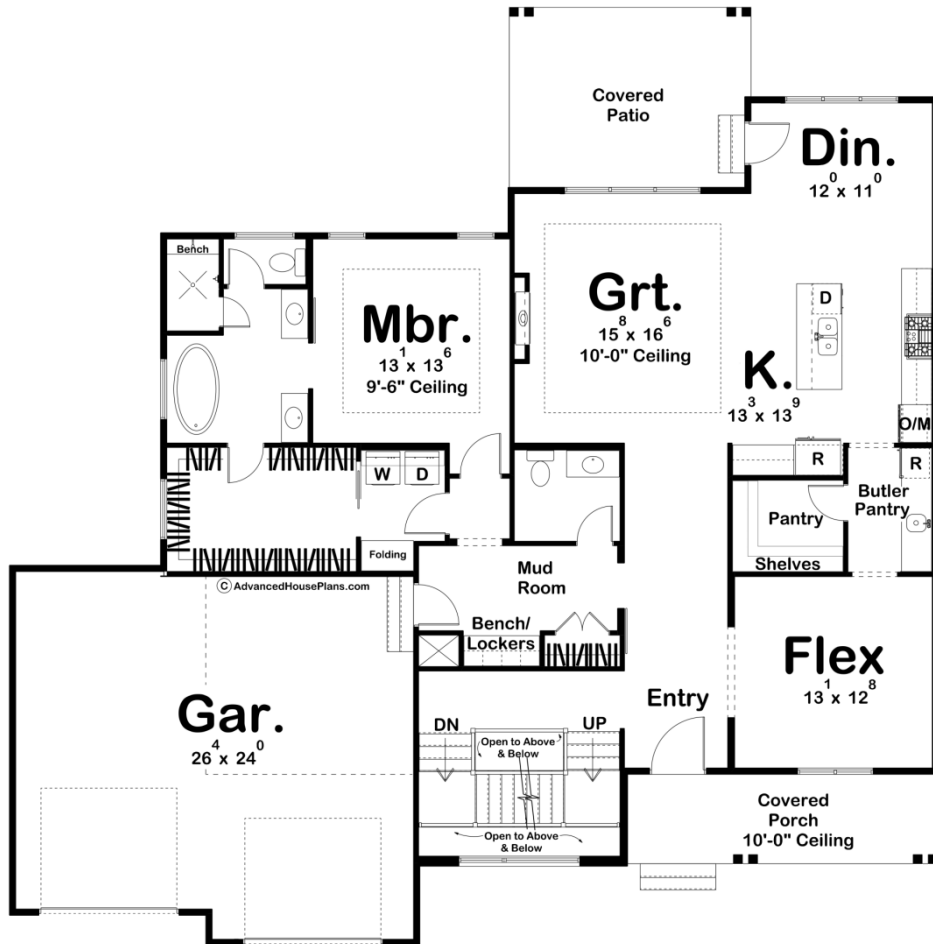
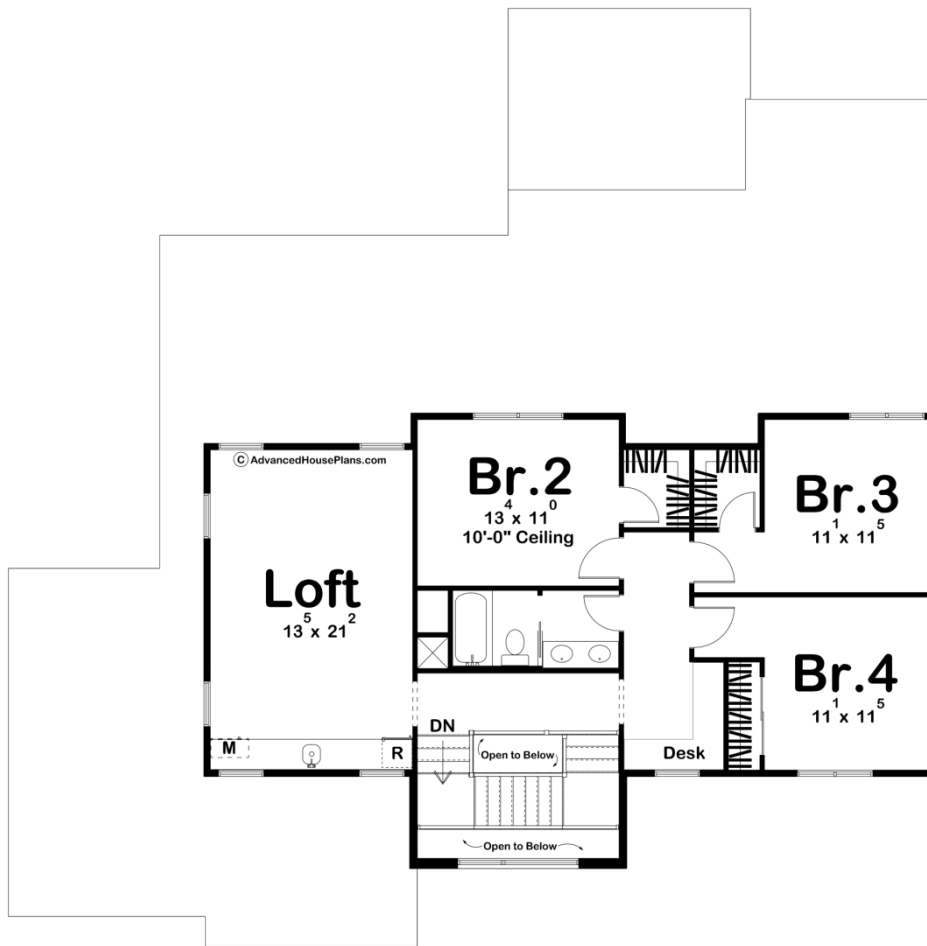




**30223 - Bandera Heights Data Sheet**

2925 SQ FT	4 BEDS	3 BATHS	2 BAYS	61' 4" WIDE	62' 0" DEEP
---------------	-----------	------------	-----------	----------------	----------------





## Construction Specs

### Layout

Bedrooms	4
Bathrooms	3
Garage Bays	2

### Square Footage

Main Level	1854 Sq. Ft.
Second Level	1071 Sq. Ft.
Covered Area	314 Sq. Ft.
Garage	631 Sq. Ft.
Total Finished Area	2925 Sq. Ft.

### Exterior Dimensions

Width	61' 4"
Depth	62' 0"
Ridge Height	27' 1"
<i>Calculated from main floor line</i>	

## Default Construction Stats

*Stats are unique to the individual plan.*

Foundation Type	Basement
Exterior Wall Construction	2x4
Roof Pitches	Primary 6/12, Secondary 10/12, 3/12
Foundation Wall Height	9'
Main Wall Height	9'
Second Wall Height	8'

## Plan Description

The Bandera Heights plan is a gorgeous modern farmhouse with the most stunning curb appeal. The touches of modern on the exterior truly give this home a luxurious and comforting feel. Stone, wood, and metal accents all add together to create a glorious home exterior. The covered porch with a ten foot ceiling walks straight into the lengthy entryway that directs you to the main living area, or upstairs to the bedrooms. Walking straight in brings you to a flex area that flows into a butler pantry, where the additional walk-in pantry can be found. This is connected to the kitchen, dining room, and great room. Here you can find a built-in fireplace, large kitchen island, and access to the back covered patio. Walking back through the hallway from the entry is where you can be directed to the mudroom and powder bath that leads into the master bedroom. The flow of this room starts through the bedroom, then the bathroom with double vanities, a soaking tub, and separate shower and toilet areas. An extremely large walk-in closet connects to the laundry room, and then back out to the mudroom, where you can head out through the two car garage. The upstairs as mentioned before consists of 3 bedrooms, a bathroom, and a loft. There is a built-in desk, perfect for working from home, and the loft is complete with an additional microwave, refrigerator, and sink.