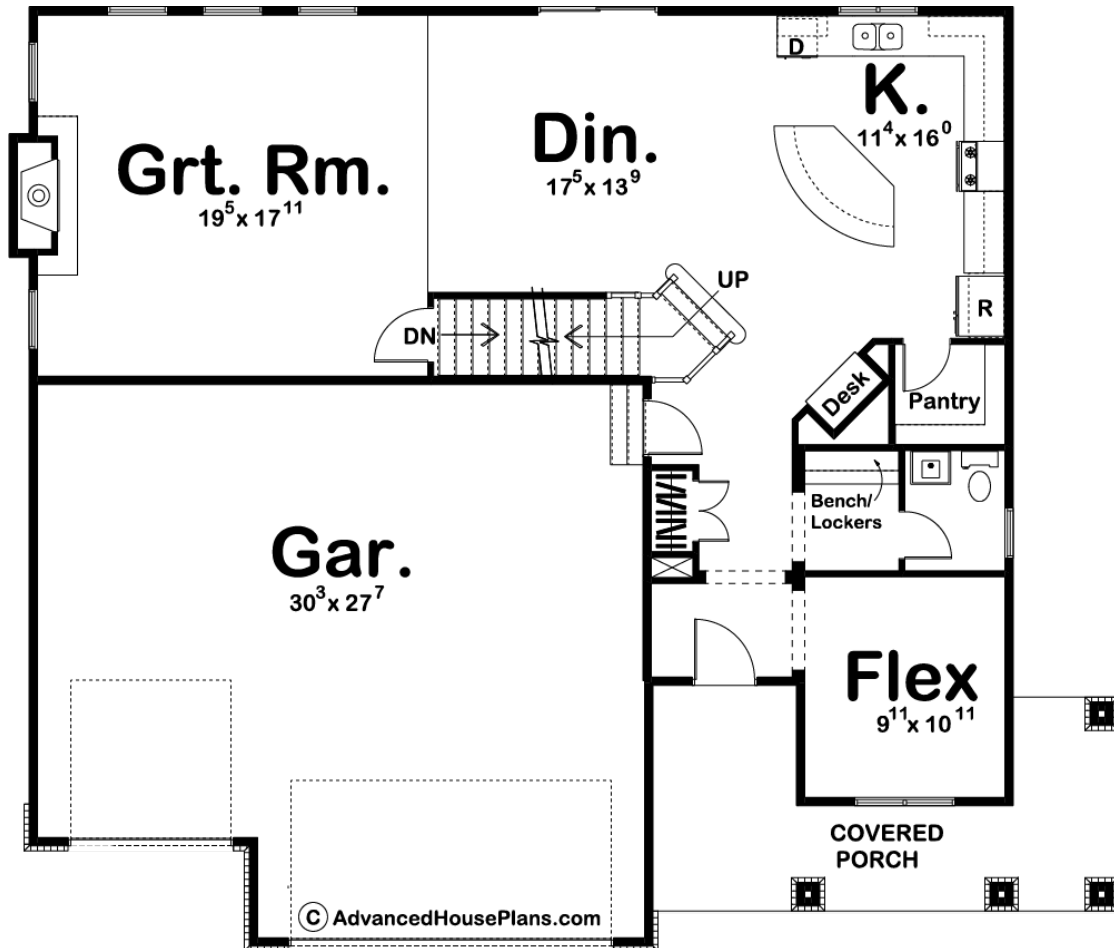


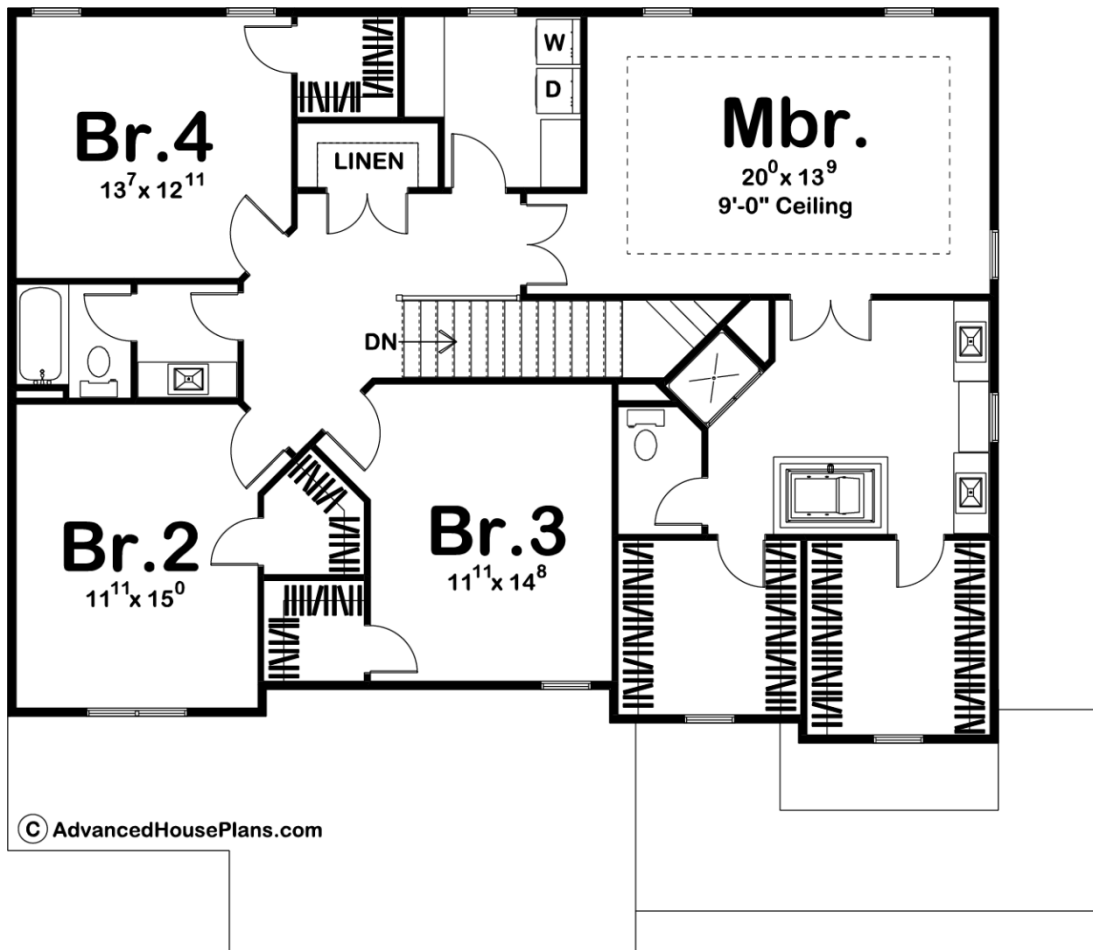


©WWW.ADVANCEDHOUSEPLANS.COM

29321 - Baker Data Sheet

2906 SQ FT	4 BEDS	3 BATHS	3 BAYS	54' 0" WIDE	47' 0" DEEP
---------------	-----------	------------	-----------	----------------	----------------





Construction Specs

Layout

Bedrooms	4
Bathrooms	3
Garage Bays	3

Square Footage

Main Level	1255 Sq. Ft.
Second Level	1651 Sq. Ft.
Garage	813 Sq. Ft.
Total Finished Area	2906 Sq. Ft.

Exterior Dimensions

Width	54' 0"
Depth	47' 0"
Ridge Height	30' 0"
<i>Calculated from main floor line</i>	

Default Construction Stats

Stats are unique to the individual plan.

Foundation Type	Basement
Exterior Wall Construction	2x4
Roof Pitches	6/12
Foundation Wall Height	9'
Main Wall Height	9'
Second Wall Height	8'

Plan Description

Traditional styling, enhanced by sturdy columns, a wrapping front porch and plenty of storage space, makes this 4-bedroom, 2-story house plan a great choice for growing families. Just inside the entry, a flex room offers unlimited options for use. A few additional steps reveal the dining area and kitchen with angled island work area, pantry, and built-in desk. The great room interacts openly with the kitchen and dining area and features a fireplace and plenty of natural light from five windows. A 3-car garage accesses the home adjacent to where a handy coat closet resides in the entry hall. Upstairs, the master suite boasts a sizeable bath area with his-and-her vanities, soaking tub, shower, compartmented toilet and a pair of roomy walk-in closets. Bedrooms 2, 3 and 4 each have a walk-in closet and they share a centrally located hall bath. In the hallway, a laundry room and linen closet serve all bedrooms.