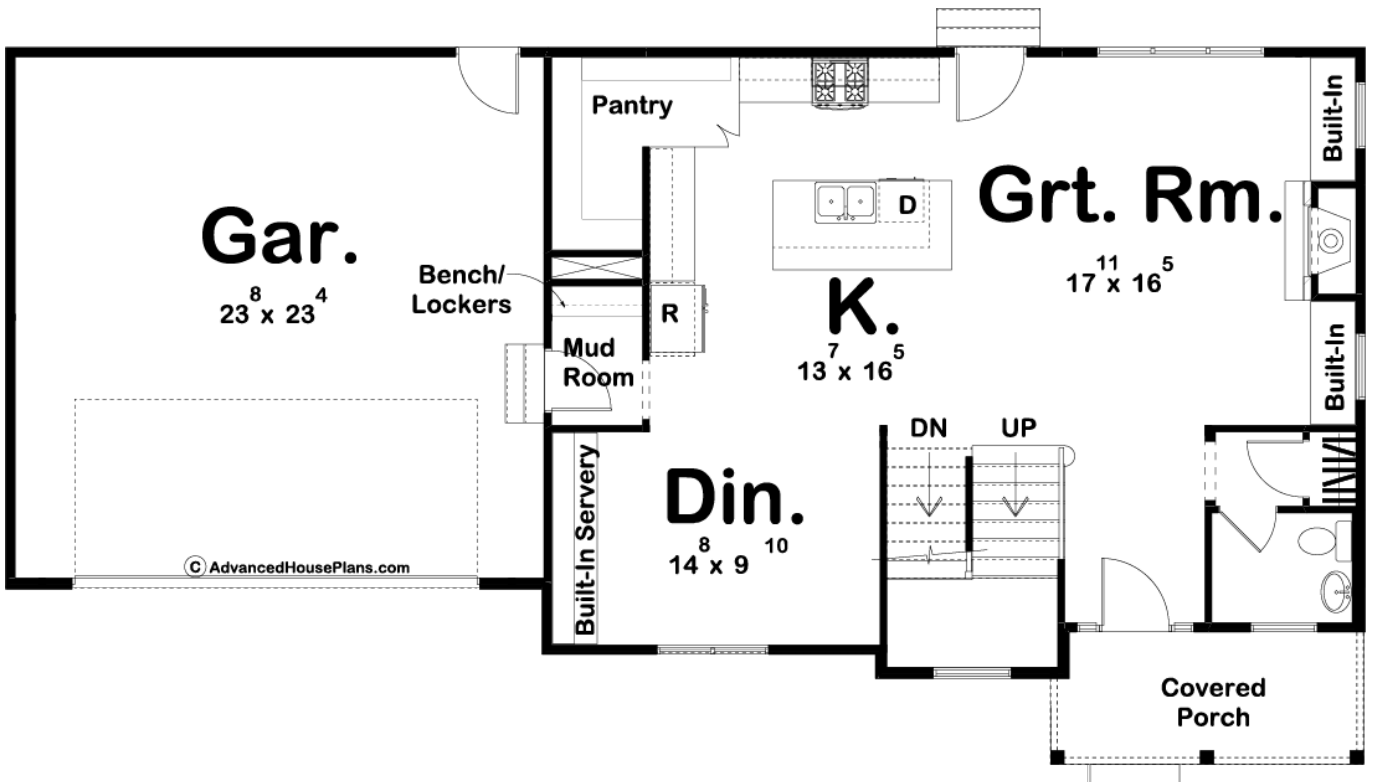


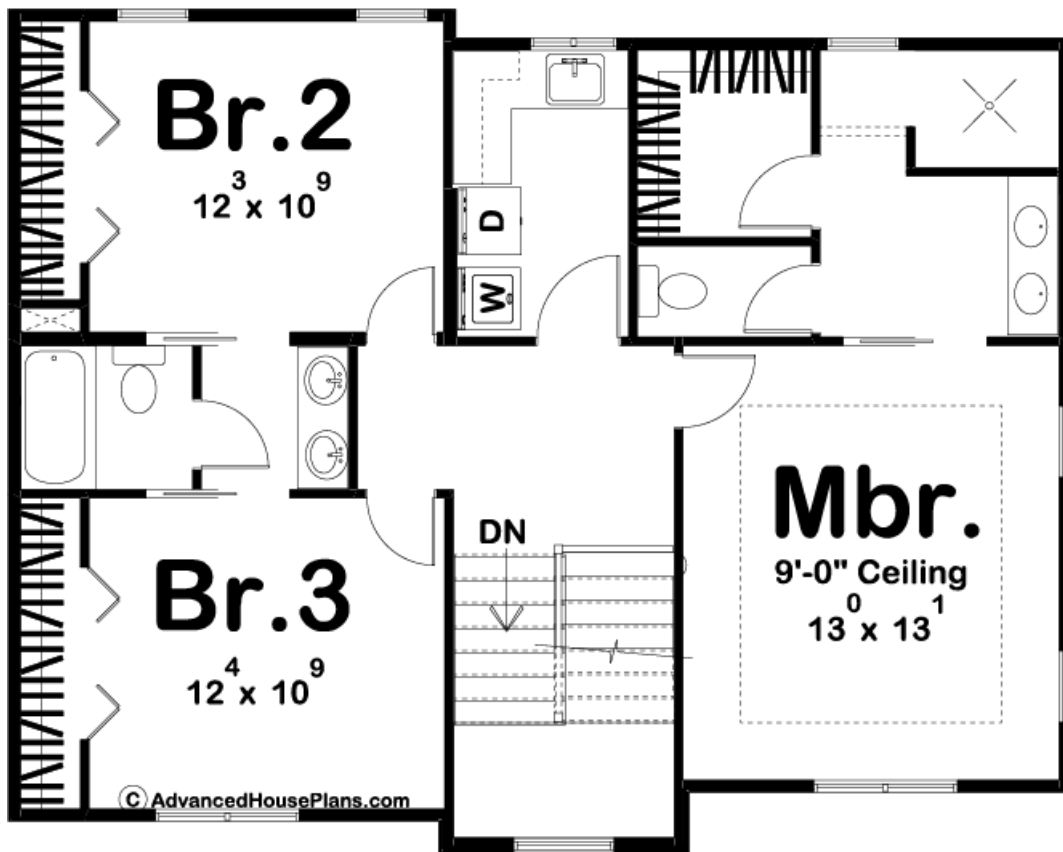
ADVANCED
HOUSE PLANS



29637 - Aspen Data Sheet

1910 SQ FT	3 BEDS	3 BATHS	2 BAYS	60' 8" WIDE	32' 0" DEEP
---------------	-----------	------------	-----------	----------------	----------------





Construction Specs

Layout

Bedrooms	3
Bathrooms	3
Garage Bays	2

Square Footage

Main Level	985 Sq. Ft.
Second Level	925 Sq. Ft.
Garage	576 Sq. Ft.
Total Finished Area	1910 Sq. Ft.

Exterior Dimensions

Width	60' 8"
Depth	32' 0"

Default Construction Stats

Stats are unique to the individual plan.

Foundation Type	Basement
-----------------	----------

Exterior Wall Construction	2x4
Roof Pitches	10/12 Primary, 6/12 Secondary
Foundation Wall Height	9'
Main Wall Height	9'
Second Wall Height	8'

Plan Description

At less than 2,000 square feet, this family-friendly, Craftsman Style, 2-story house plan offers practical room arrangements and an abundance of additional space. The front of the home radiates a sense of solid, established warmth with stone details, wood beams, and a covered front porch. Inside, the entry hall opens to a comfortable family room with fireplace and built-in cabinets. The open arrangement between the family room and the kitchen creates an inviting atmosphere for entertaining guests or just hanging out with the family. Adjacent to the kitchen, a formal dining room -- with a built-in servery -- stands ready to host memorable meals. Upstairs, the master suite includes a bath with walk-in closet, walk-in shower, his and her vanities and a compartmented toilet. Bedrooms 2 and 3 share a Jack and Jill bath. Upstairs there is a large laundry room that has a folding counter and soaking sink.