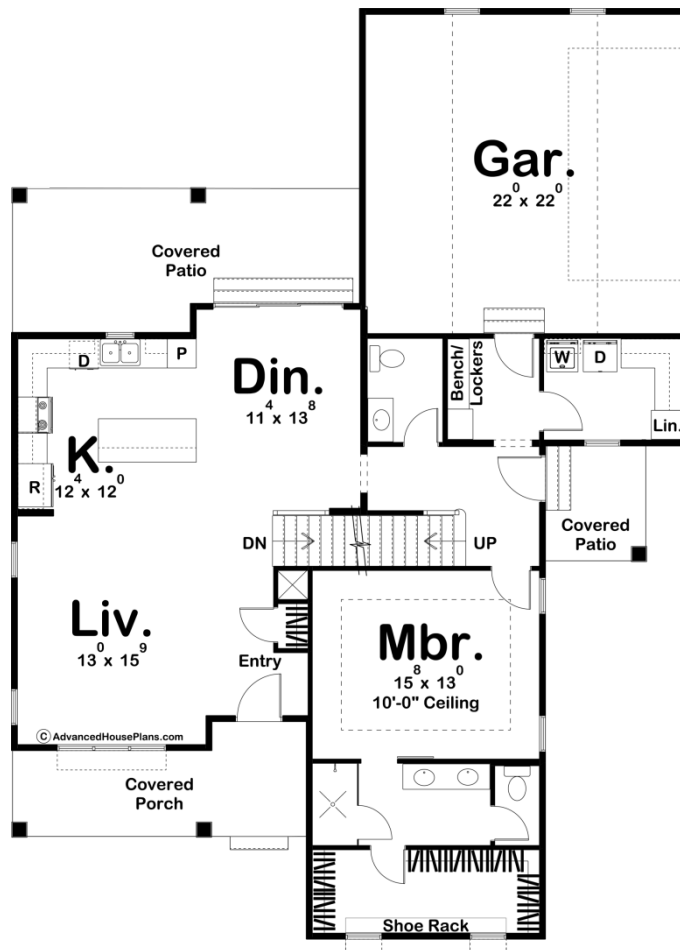
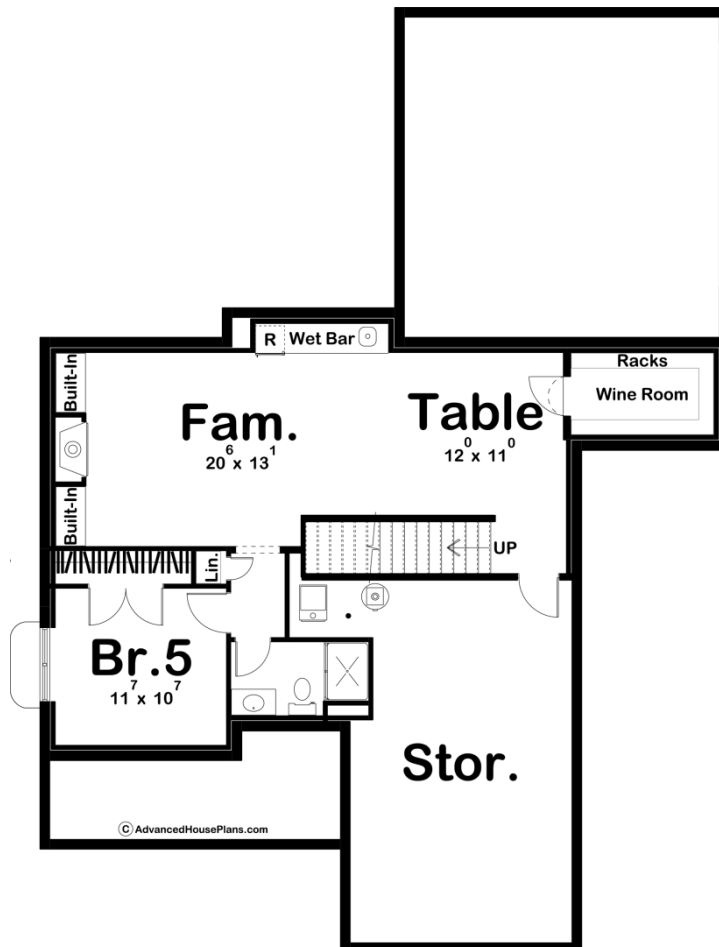
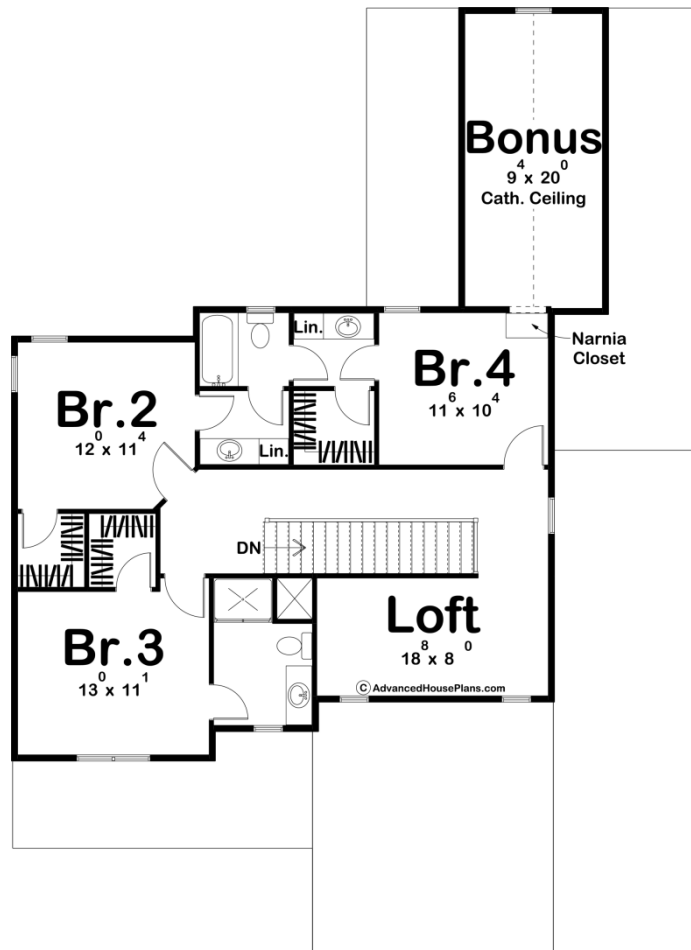




29831 - Applewood Data Sheet

| | | | | | |
|---------------|-----------|------------|-----------|----------------|----------------|
| 2318 SQ FT | 4 BEDS | 4 BATHS | 2 BAYS | 47' 0" WIDE | 64' 0" DEEP |
|---------------|-----------|------------|-----------|----------------|----------------|





Construction Specs

Layout

| | |
|-------------|---|
| Bedrooms | 4 |
| Bathrooms | 4 |
| Garage Bays | 2 |

Square Footage

| | |
|---------------------|--------------|
| Main Level | 1352 Sq. Ft. |
| Second Level | 966 Sq. Ft. |
| Garage | 506 Sq. Ft. |
| Total Finished Area | 2318 Sq. Ft. |

Exterior Dimensions

| | |
|--|--------|
| Width | 47' 0" |
| Depth | 64' 0" |
| Ridge Height <i>Calculated from main floor line</i> | 30' 0" |

Default Construction Stats

Stats are unique to the individual plan.

| | |
|----------------------------|------------------------------------|
| Foundation Type | Basement |
| Exterior Wall Construction | 2x4 |
| Roof Pitches | 8/12 Primary, 4/12 10/12 Secondary |
| Foundation Wall Height | 9' |
| Main Wall Height | 9' |
| Second Wall Height | 8' |

Plan Description

Our Applewood plan is a gorgeous Modern Farmhouse plan that is packed with amenities and hidden features. The exterior of the home combines board and batten siding with wood elements and metal roof accents to give this house that Modern Farmhouse curb appeal. Inside the home, you'll love the wide-open floor plan on the main level. The kitchen includes a large island with a snack bar. The master suite is conveniently located on the main floor as well and includes a massive walk-in closet with a built-in shoe rack. On the second level, you'll find a fantastic loft that makes a great play area for kids. There are also 3 bedrooms on the second level. Bedrooms 2 and 4 share a jack and jill bathroom while bedroom 3 has its own bathroom. Each of the bedrooms has its own walk-in closet. The coolest feature can be found in bedroom 4. An inconspicuous wardrobe opens up to a massive room above the garage through a Narnia closet. This bonus room adds 204 sq ft to the house plan and is a great place for a kid's playroom. This plan is also available with a finished basement that adds 795 sq ft to the plan. It also adds a family room with a wet bar and fireplace that is flanked by built-in bookshelves, a wine room, and an additional bedroom.