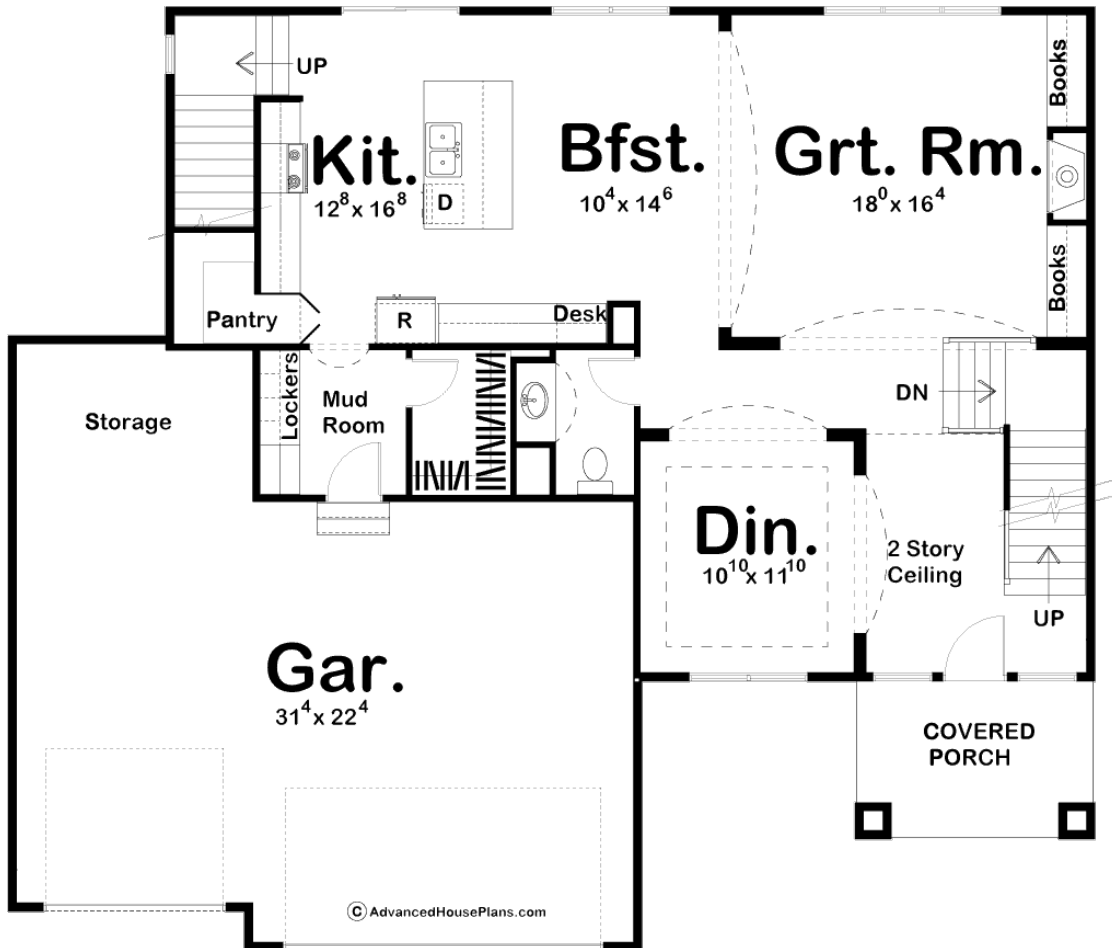
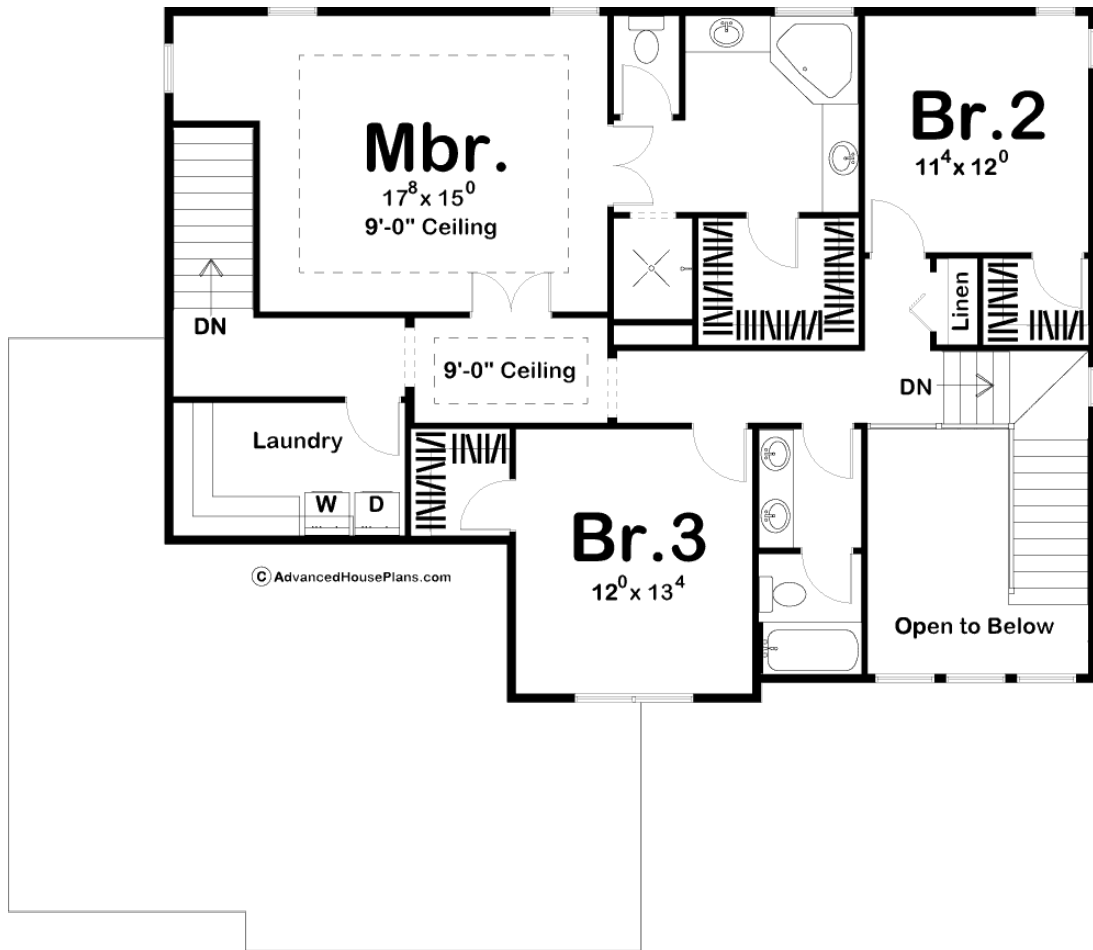




**29046 - Alison Data Sheet**

|               |           |            |           |                |                |
|---------------|-----------|------------|-----------|----------------|----------------|
| 2633<br>SQ FT | 3<br>BEDS | 3<br>BATHS | 3<br>BAYS | 55' 0"<br>WIDE | 48' 0"<br>DEEP |
|---------------|-----------|------------|-----------|----------------|----------------|





## Construction Specs

### Layout

|             |   |
|-------------|---|
| Bedrooms    | 3 |
| Bathrooms   | 3 |
| Garage Bays | 3 |

### Square Footage

|                     |              |
|---------------------|--------------|
| Main Level          | 1354 Sq. Ft. |
| Second Level        | 1279 Sq. Ft. |
| Garage              | 805 Sq. Ft.  |
| Total Finished Area | 2633 Sq. Ft. |

### Exterior Dimensions

|  |        |
|--|--------|
| Width                                  | 55' 0" |
| Depth                                  | 48' 0" |
| Ridge Height                           | 28' 0" |
| <i>Calculated from main floor line</i> |        |

## Default Construction Stats

*Stats are unique to the individual plan.*

|                            |                              |
|----------------------------|------------------------------|
| Foundation Type            | Basement                     |
| Exterior Wall Construction | 2x4                          |
| Roof Pitches               | Primary 4/12, Secondary 6/12 |
| Foundation Wall Height     | 9'                           |
| Main Wall Height           | 9'                           |
| Second Wall Height         | 8'                           |

## Plan Description

Clean lines and shallow angles speak the unmistakable language of Mediterranean styling on this family-sized, 2-story house plan. Tall columns highlight the covered front porch. Upon entering the home, guests are greeted by a two-story-high entry hall with views into the formal dining room. A few steps farther inside reveal a spacious great room with a fireplace flanked by built-in bookcases. Adjacent to the great room, the breakfast area lies open to the kitchen with its breakfast island, walk-in pantry and built-in desk. Just off the kitchen, a mudroom with walk-in closet and built-in lockers accesses the three-car garage. The garage features a storage area that could opt as space for a workshop. A secondary rear stairway leads from the kitchen area to the second level. Upstairs, the master bedroom features a cozy, but naturally lit sitting area -- perfect for reading. The master bath offers pampering features that include his and her vanities, a corner tub, walk-in closet and compartmented toilet. Bedrooms 2 and 3 have walk-in closets and share a centrally located hall bath. A second-level laundry conveniently serves all bedrooms with plenty of counter space for folding clothes.