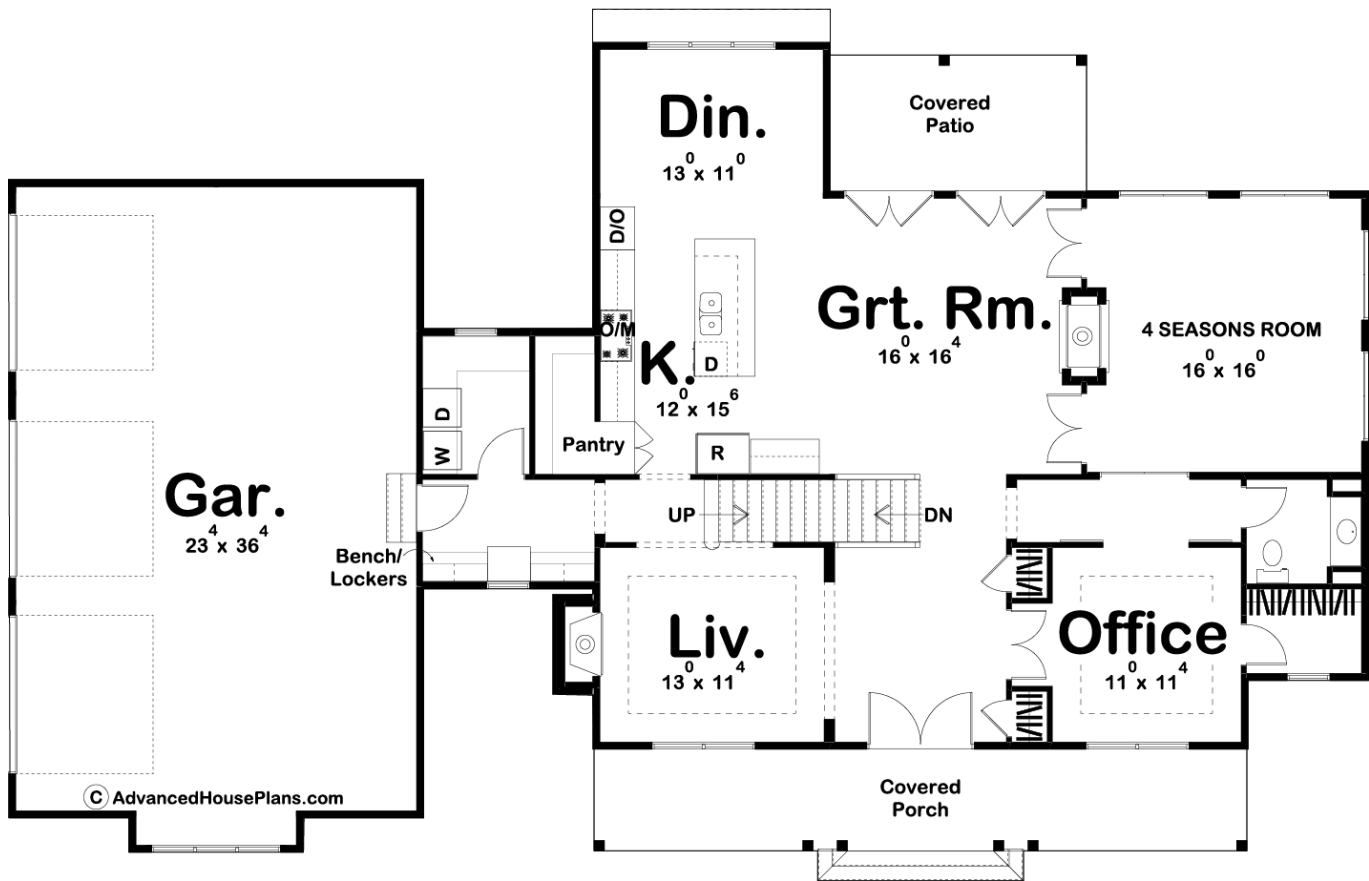
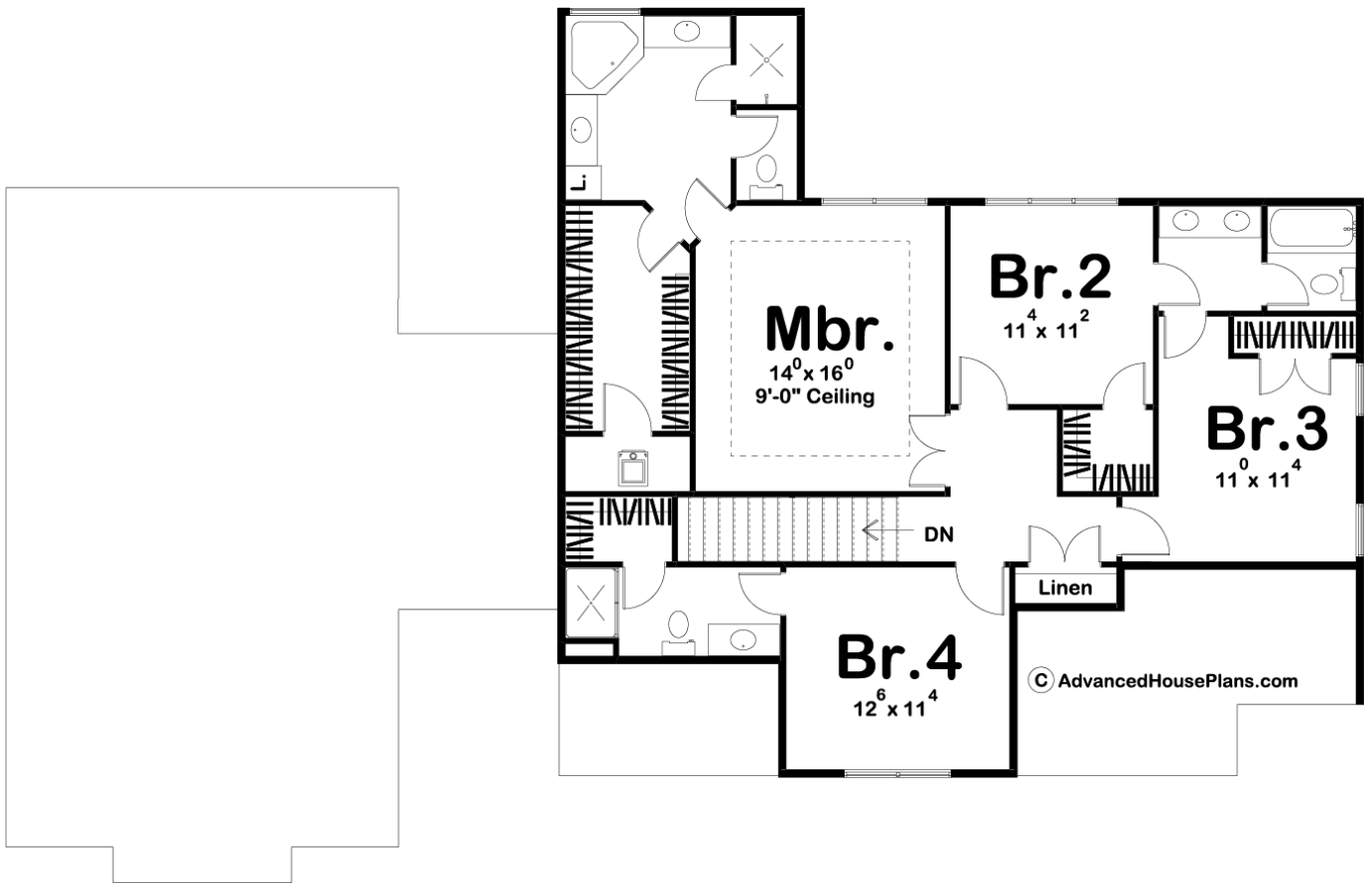




**29657 - Addison Farm Data Sheet**

2675 SQ FT	4 BEDS	4 BATHS	3 BAYS	79' 0" WIDE	47' 0" DEEP
---------------	-----------	------------	-----------	----------------	----------------





## Construction Specs

Layout	
Bedrooms	4
Bathrooms	4
Garage Bays	3
Square Footage	
Main Level	1426 Sq. Ft.
Second Level	1249 Sq. Ft.
Garage	904 Sq. Ft.
Total Finished Area	2675 Sq. Ft.
Exterior Dimensions	
Width	79' 0"
Depth	47' 0"
Default Construction Stats	
<i>Stats are unique to the individual plan.</i>	
Foundation Type	Basement

Exterior Wall Construction	2x4
Roof Pitches	12/12 Primary, 6/12 4/12 Secondary
Foundation Wall Height	9'
Main Wall Height	9'
Second Wall Height	8'

## Plan Description

Modern Farmhouse styling, accented by board and batten siding and a front covered porch, conveys a welcoming appearance to this efficiently designed, 2-story home plan. Entry through the front covered porch reveals an open living room that is warmed by a fireplace. Further into the house you will find an open arrangement of the great room, dining room, and kitchen. The great room is warmed by a double sided fireplace that also warms the large 4 seasons room. The kitchen includes a large island with a breakfast bar and a large walk-in pantry. The second floor master suite features a 9-foot-high boxed ceiling. Its bath area features his and her vanities, walk-in shower, compartmented toilet and a corner soaking tub. Also on the second level, bedrooms 2 and 3 share a bath and bedroom 4 has it's own bathroom.