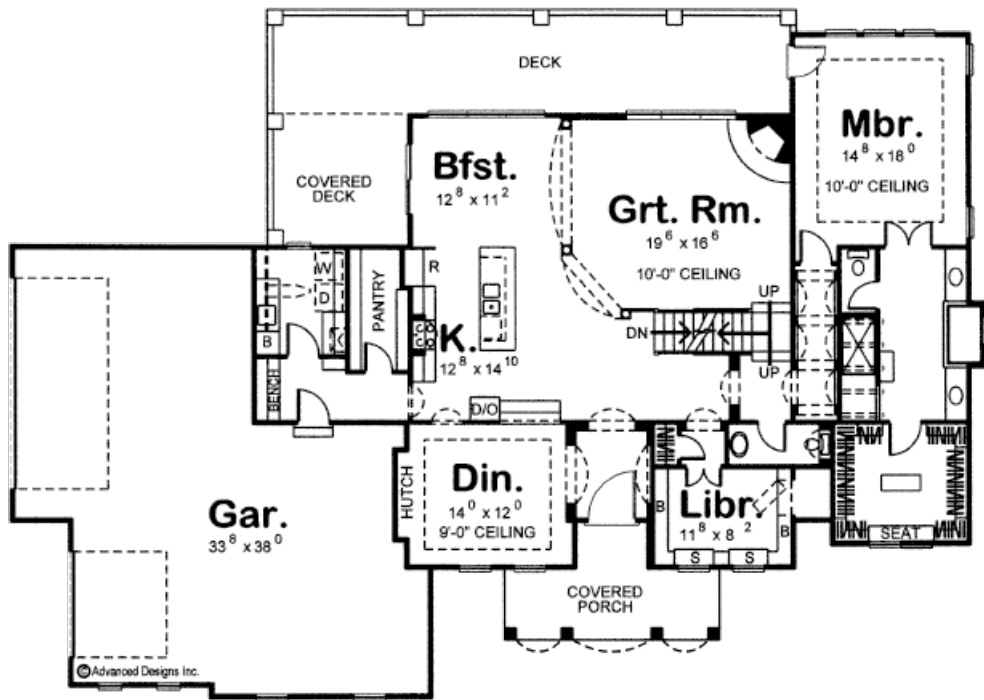
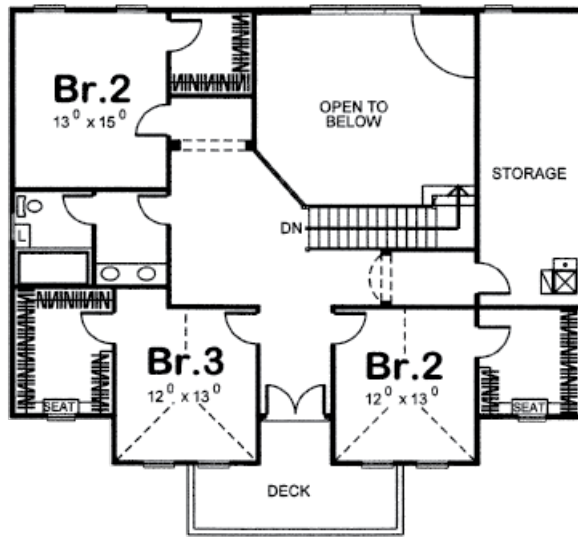




29133 - Acevedo Data Sheet

3365 SQ FT	3 BEDS	4 BATHS	3 BAYS	59' 0" WIDE	83' 0" DEEP
---------------	-----------	------------	-----------	----------------	----------------





Construction Specs

Layout

Bedrooms	3
Bathrooms	4
Garage Bays	3

Square Footage

Main Level	2139 Sq. Ft.
Second Level	1226 Sq. Ft.
Garage	996 Sq. Ft.
Total Finished Area	3365 Sq. Ft.

Exterior Dimensions

Width	59' 0"
Depth	83' 0"
Ridge Height	29' 0"
<i>Calculated from main floor line</i>	

Default Construction Stats

Stats are unique to the individual plan.

Foundation Type	Basement
Exterior Wall Construction	2x4
Roof Pitches	6/12
Foundation Wall Height	9'
Main Wall Height	9'
Second Wall Height	9'

Plan Description

A striking front porch, lined with columns and topped by a balconied deck, serves as a beautiful centerpiece to this marvelous Mediterranean-style, 1-1/2 story house plan. Just inside, the entry hall is flanked by a library and formal dining room with built-in hutch. The library features built-in bookcases -- one of which that cleverly swings open to reveal a "secret" space. Further inside the kitchen, breakfast area and great room interact openly. The great room features a soaring 2-story-high ceiling and corner fireplace. Its border is defined by elegant columns and arches. The breakfast area accesses a covered deck and has open views to an uncovered deck that sprawls across the rear of the home. The kitchen offers a breakfast island workspace and a sizeable walk-in pantry. Just beyond the pantry lies a utility area, featuring a laundry room and mud room that accesses the home's 3-car garage. On the opposite side of the home, a series of decorative arches lead the way to the master suite. The master bedroom, with a 10-foot-high ceiling, is brightly lit with natural light and accesses the rear deck. The luxurious bath area features his and her vanities that flank a soaking tub, walk-in shower, compartmented toilet and large walk-in closet with built-in dressing seat. Upstairs, a central landing opens to an upper-level front deck. Each of the three secondary bedrooms features walk-in closets and share a centrally located bath. An alcove just off the landing leads to a generous storage area with three windows.