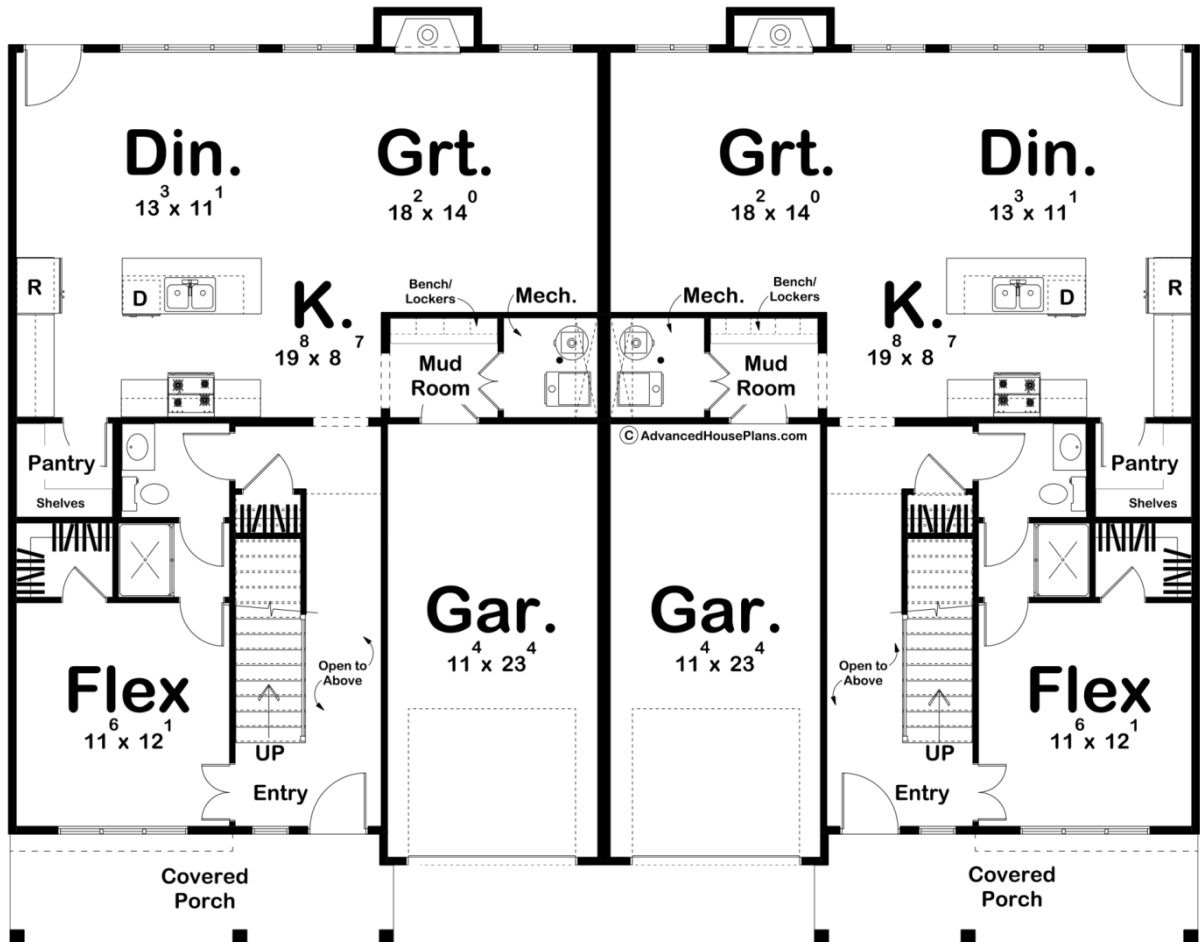
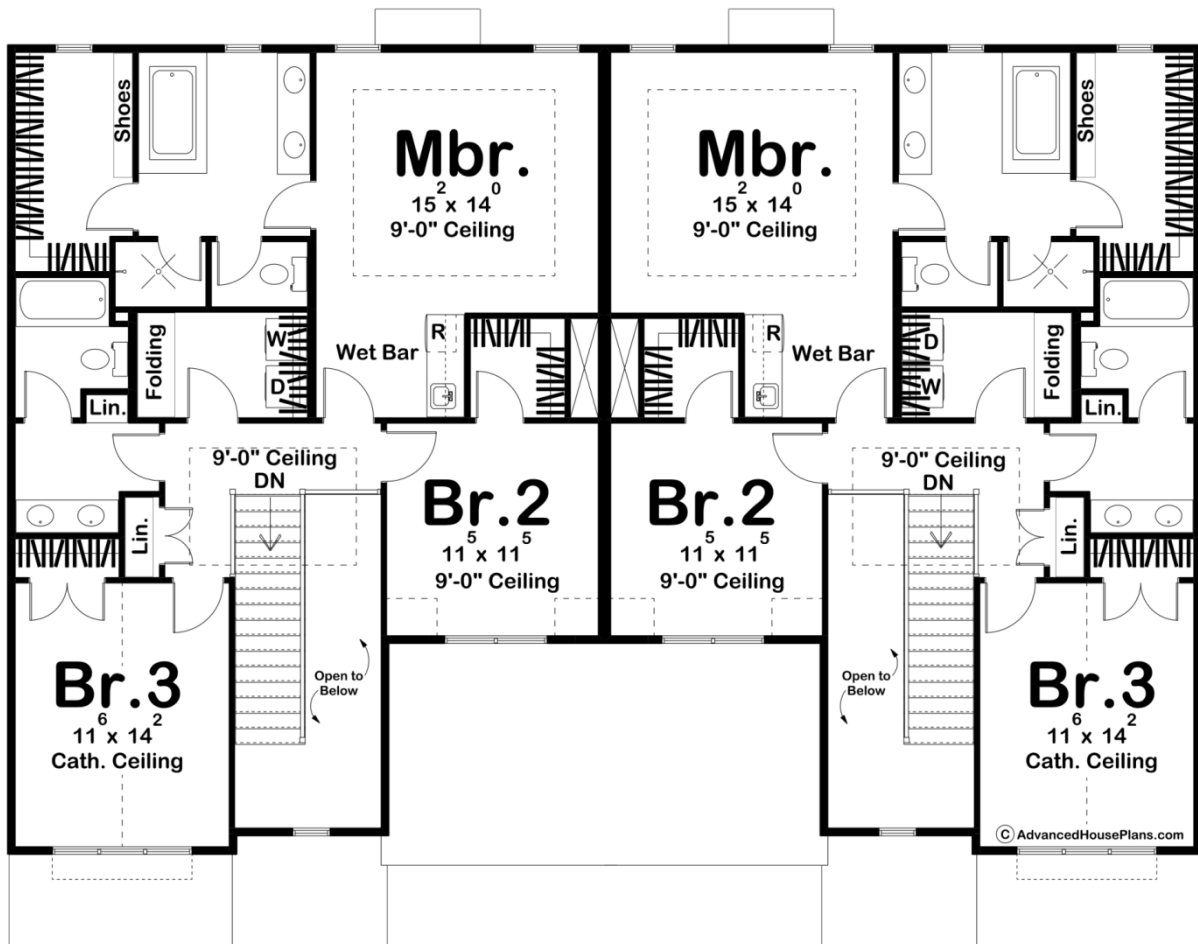




30273 - Abilene Data Sheet

2177 SQ FT	3 BEDS	3 BATHS	1 BAYS	64' 0" WIDE	50' 4" DEEP
---------------	-----------	------------	-----------	----------------	----------------





Construction Specs

Layout

Bedrooms	3
Bathrooms	3
Garage Bays	1

Square Footage

Main Level	1071 Sq. Ft.
Second Level	1106 Sq. Ft.
Covered Area	123 Sq. Ft.
Garage	277 Sq. Ft.
Total Finished Area	2177 Sq. Ft.

Exterior Dimensions

Width	64' 0"
Depth	50' 4"
Ridge Height	27' 0"
<i>Calculated from main floor line</i>	

Default Construction Stats

Stats are unique to the individual plan.

Foundation Type	Slab
Exterior Wall Construction	2x4
Roof Pitches	Primary 10/12, Secondary 6/12, 4/12
Main Wall Height	9'
Second Wall Height	8'

Plan Description

To see this plan in single-family form, head over to our Crandall plan. This modern farmhouse style duplex is a beautiful multi-family version of our Crandall plan. With board and batten siding as well as the contrast from the black exterior and wood accents, the curb appeal of this plan is show stopping. A covered porch next to the one-car garage is a wonderful space to sit and have coffee in the morning, or a place to watch the sunsets after dinner. Head inside to find a long hallway with stairs to head up to all the bedrooms. A flex room with a walk-in closet can also be found next to the stairs, making a great space for an office or extra bedroom. This room connects to a shared bathroom, as well as leads out into the shared space for the kitchen, dining room, and great room. The kitchen provides a large kitchen island, a walk-in pantry, and a mudroom to access the one-car garage. As previously mentioned, the upstairs is where all the bedrooms can be found. The master bedroom is complete with a wet bar upon entry, a large private bathroom, double vanity, soaking tub, and separate toilet and shower areas. A large walk-in closet can also be found connected with a built-in shoe rack. The laundry room can also be found here, as well as the bathroom for bedrooms 2 and 3 to share.