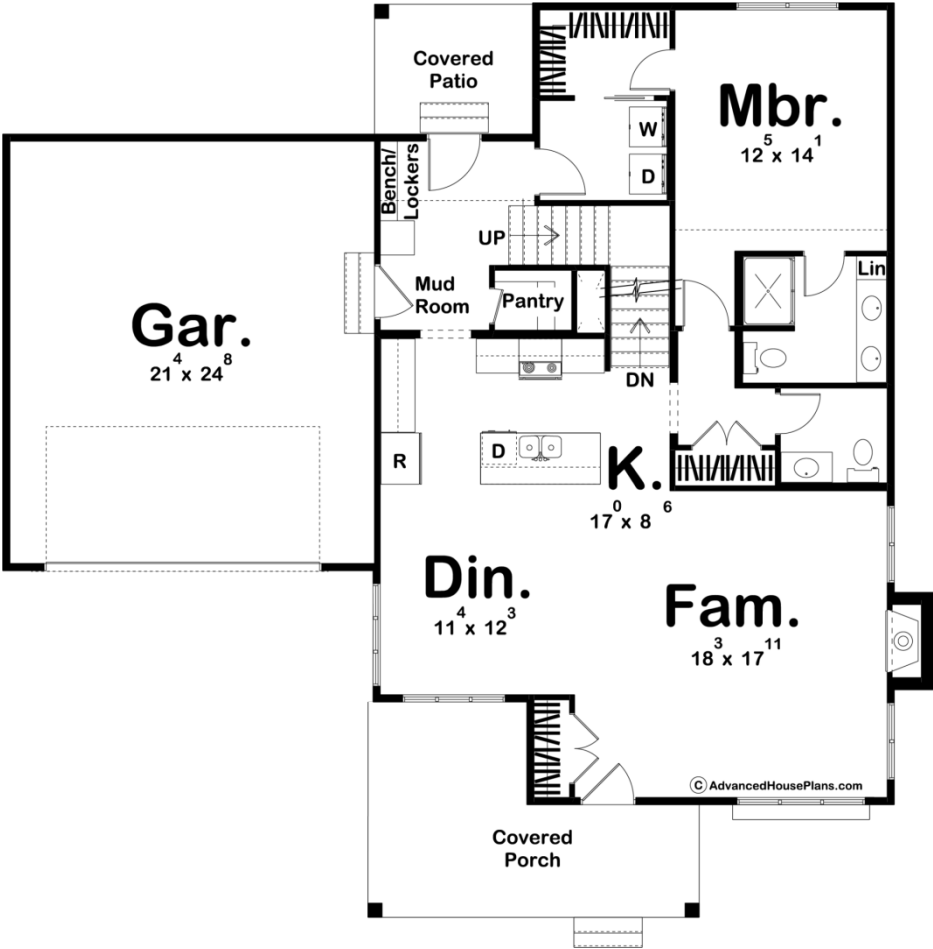
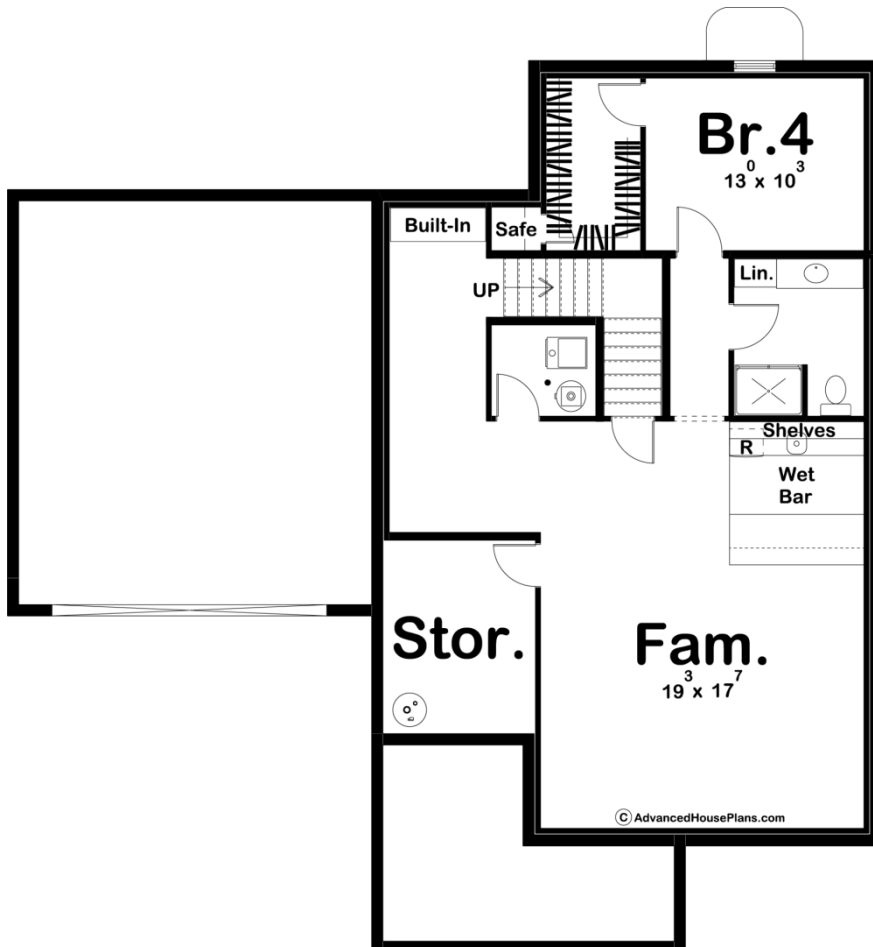
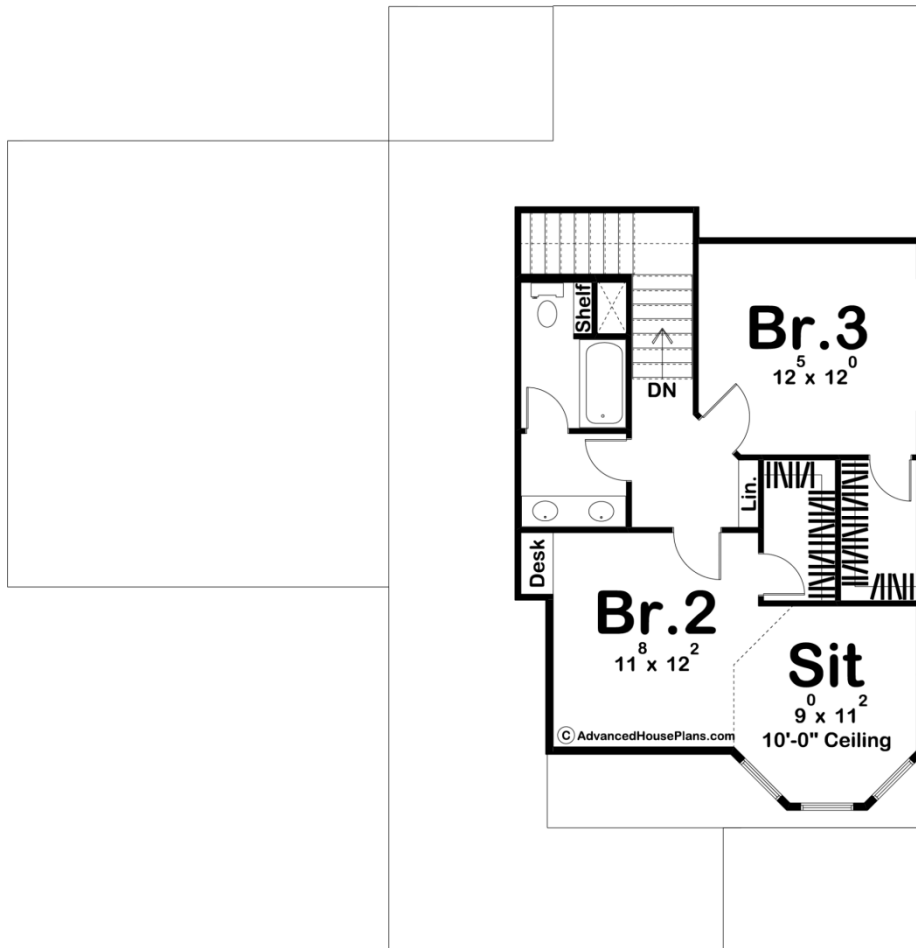




29862 - Tobias Data Sheet

1932 SQ FT	3 BEDS	3 BATHS	2 BAYS	52' 0" WIDE	54' 0" DEEP
---------------	-----------	------------	-----------	----------------	----------------





Construction Specs

Layout	
Bedrooms	3
Bathrooms	3
Garage Bays	2
Square Footage	
Main Level	1290 Sq. Ft.
Second Level	642 Sq. Ft.
Garage	549 Sq. Ft.
Total Finished Area	1932 Sq. Ft.
Exterior Dimensions	
Width	52' 0"
Depth	54' 0"
Default Construction Stats	
<i>Stats are unique to the individual plan.</i>	
Foundation Type	Basement
Exterior Wall Construction	2x4
Roof Pitches	10/12 Primary, 3/12 18/12 Secondary
Foundation Wall Height	9'
Main Wall Height	8'
Second Wall Height	8'

Plan Description

The Tobias plan combines old-world Victorian charm with modern amenities. The exterior of the home has excellent curb appeal with a beautiful tower and decorative wood accents. Inside the home, you'll find a well thought out floor plan. The dining room, kitchen, and family room flow together seamlessly in an open concept layout. The family room is warmed by a fireplace and lets in great natural light through its large windows. The kitchen includes an island with a snack bar and a walk-in pantry. Located on the main floor for convenience is the master suite. The master bathroom has dual vanities and a walk-in shower. The master closet has easy access to the laundry room for your ultimate convenience. Upstairs, you'll find 2 bedrooms each with its own walk-in closet. Bedroom 2 features a large sitting room and a built-in desk. Bedrooms 2 and 3 share a centrally located hall bathroom with dual vanities. An optional finished basement adds 1029 sq ft and includes an additional bedroom, an additional bathroom, a large family room, and a wet bar.