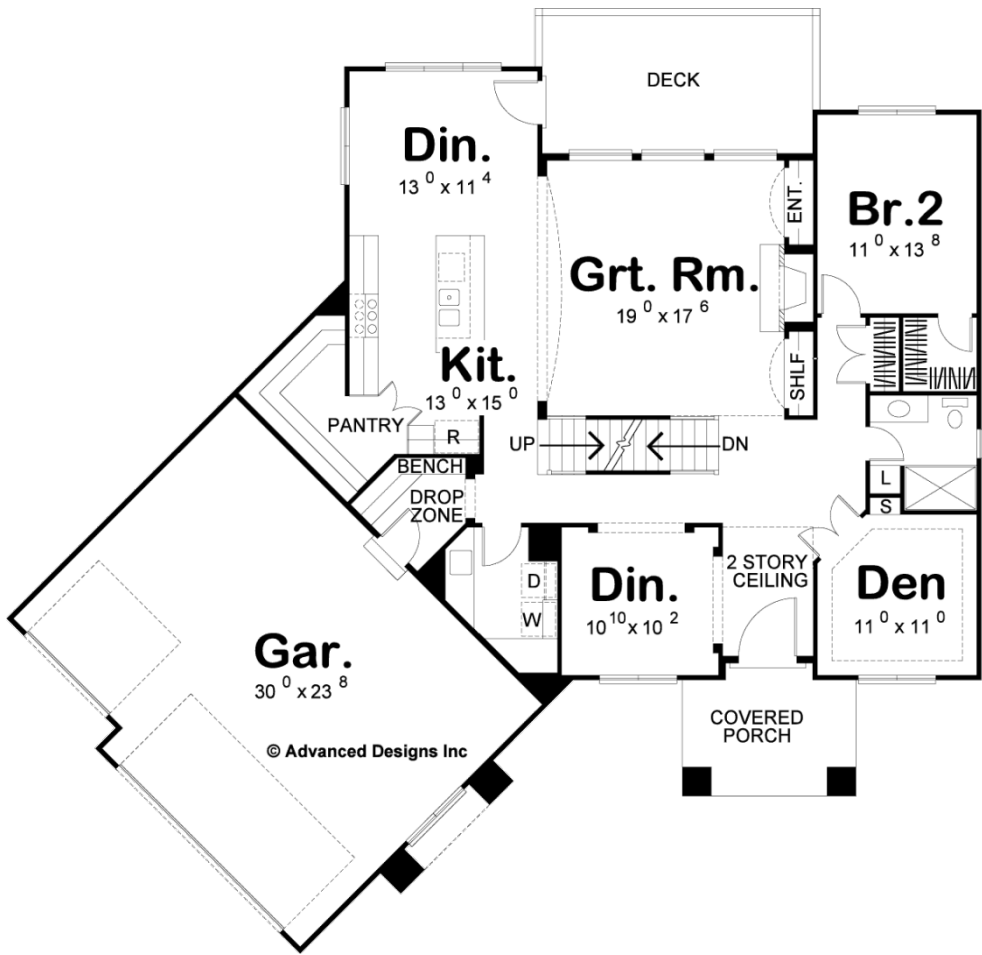
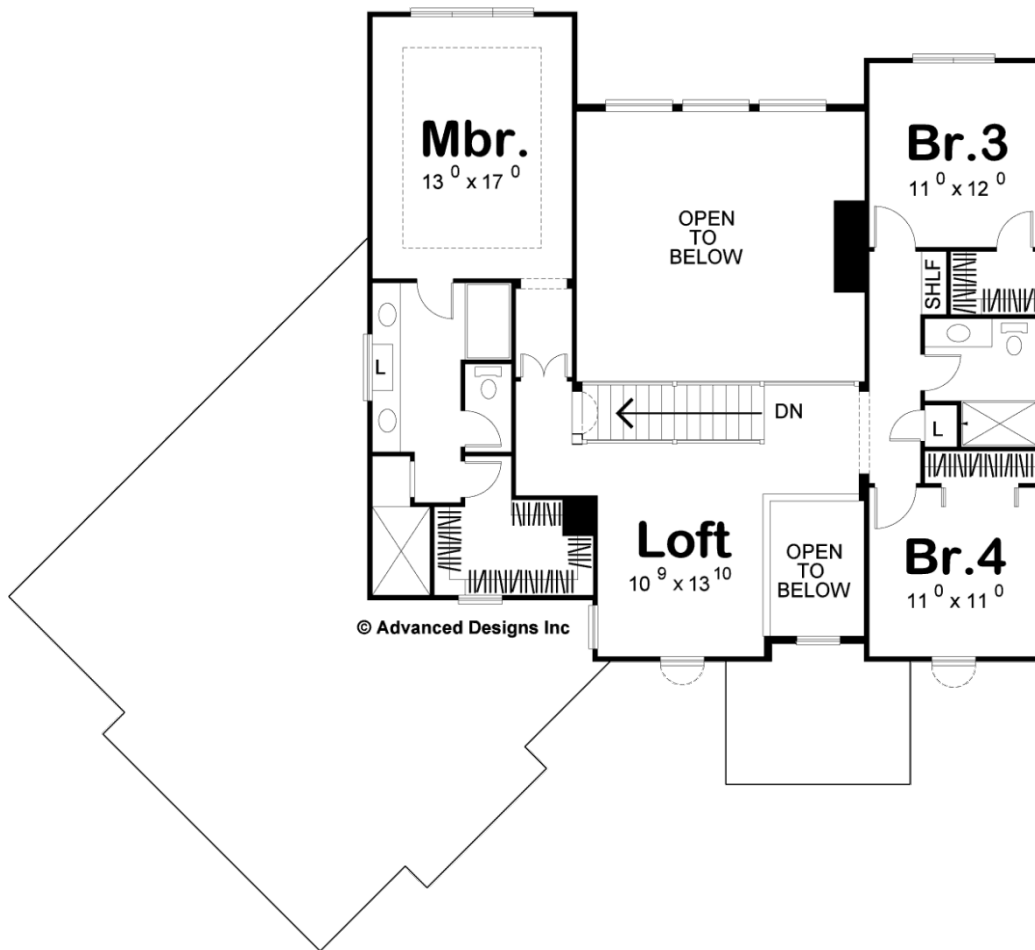




29036 - Tempe Data Sheet

3012 SQ FT	4 BEDS	3 BATHS	3 BAYS	68' 0" WIDE	66' 0" DEEP
---------------	-----------	------------	-----------	----------------	----------------





## Construction Specs

### Layout

Bedrooms	4
Bathrooms	3
Garage Bays	3

### Square Footage

Main Level	1700 Sq. Ft.
Second Level	1312 Sq. Ft.
Garage	731 Sq. Ft.
Total Finished Area	3012 Sq. Ft.

### Exterior Dimensions

Width	68' 0"
Depth	66' 0"

### Default Construction Stats

*Stats are unique to the individual plan.*

Foundation Type	Basement
-----------------	----------

Exterior Wall Construction	2x4
Roof Pitches	6/12
Foundation Wall Height	9'
Main Wall Height	9'
Second Wall Height	9'

## Plan Description

29036 TempeA blend of intriguing textures beneath shallow rooflines give this beautiful 2-story house plan an unmistakably Mediterranean flair. The front covered porch provides access to a 2-story-high entry hall that is flanked by a den and formal dining room. A beautifully appointed 2-story-high great room is situated to the rear. Its soaring fireplace is showcased by a built-in entertainment center and bookcase, and the entire space is brightened by a trio of large windows that look out onto the home's rear deck.A bright dining area and kitchen openly interact with the great room. The kitchen features an island work area and a roomy walk-in pantry. Just off the kitchen lies the laundry room and convenient drop zone area that accesses the angled 3-car-garage. A privately situated bedroom resides away from the main living areas and has the use of a nearby hall bath, complete with shower.Upstairs, the master suite is situated for privacy away from the secondary bedrooms. It's generously sized bath area includes his-and-her vanities, soaking tub, compartmented toilet, walk-in shower, and walk-in closet. Bedrooms 3 and 4 are brightened by plenty of natural light and they share a central hall bath. A loft area provides a comfortable space for reading, homework or hobbies, and offers elevated views to the main floor below.