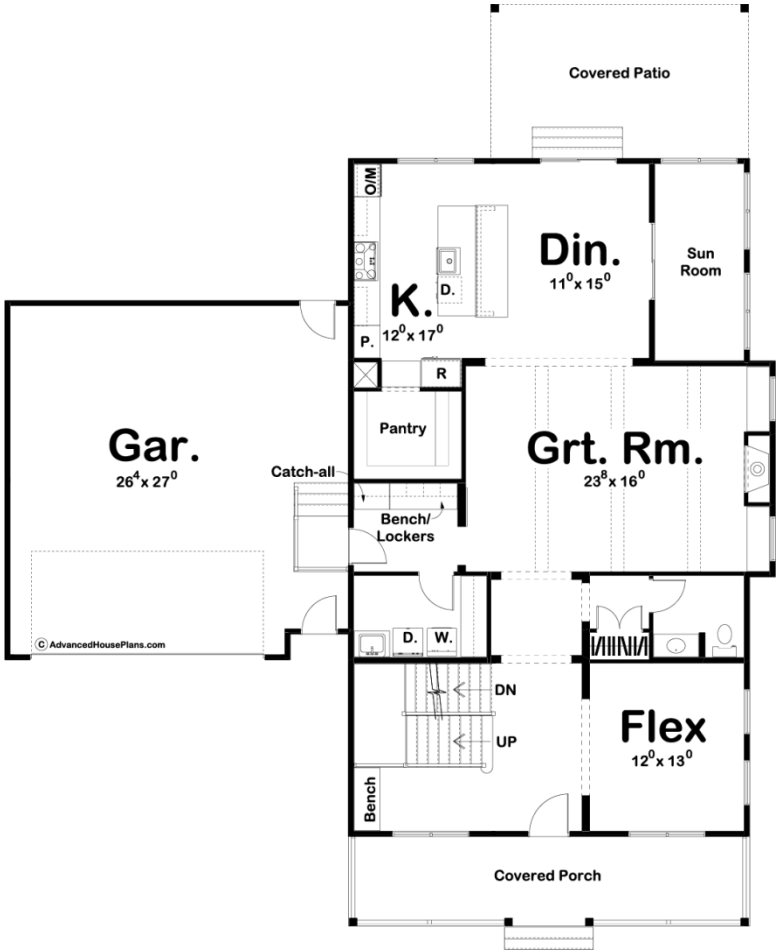
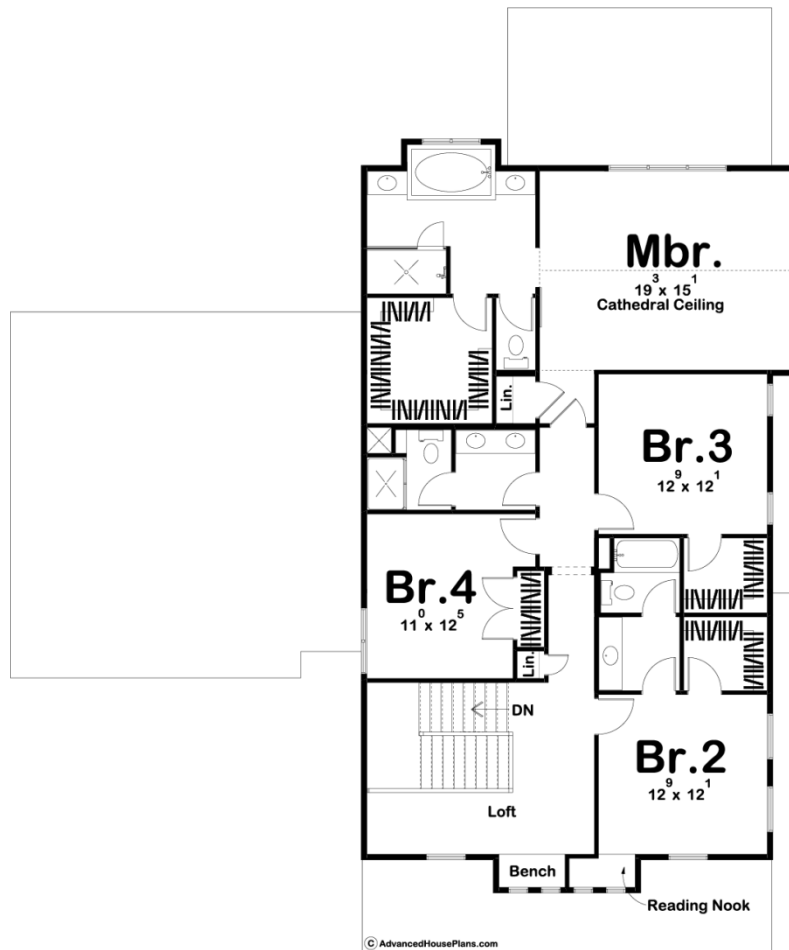




29636 - Silverton Cottage Data Sheet

3156 SQ FT	4 BEDS	4 BATHS	2 BAYS	60' 0" WIDE	72' 0" DEEP
---------------	-----------	------------	-----------	----------------	----------------





## Construction Specs

### Layout

Bedrooms	4
Bathrooms	4
Garage Bays	2

### Square Footage

Main Level	1540 Sq. Ft.
Second Level	1616 Sq. Ft.
Garage	735 Sq. Ft.
Total Finished Area	3156 Sq. Ft.

### Exterior Dimensions

Width	60' 0"
Depth	72' 0"
Ridge Height	31'
<i>Calculated from main floor line</i>	

**Default Construction Stats**  
*Stats are unique to the individual plan.*

Foundation Type	Basement
Exterior Wall Construction	2x4
Roof Pitches	8/12 Primary, 6/12 and 4/12 Secondary
Foundation Wall Height	9'
Main Wall Height	10'
Second Wall Height	8'

**Plan Description**

This 2-story, Modern Farmhouse plan is highlighted on the exterior by a front covered porch and back patio. Immediately inside, you will find an entry room with a bench and a flex room. The large great room is warmed by a fireplace and leads into an open kitchen and dining room. The kitchen, with a beautiful work island, includes a large walk-in pantry. Just off the dining room, you will find a sunroom that is perfect for relaxation. Upstairs you will find the master suite which includes a master bathroom with a compartmented toilet, walk-in shower, and a large walk-in closet. Bedrooms 3 and 4 share a convenient, centrally located bathroom just off the hallway. Bedroom 4 has its own bathroom and walk-in closet. Back on the main level, the generously proportioned 2-car garage accesses the home through a mudroom, complete with bench, lockers.