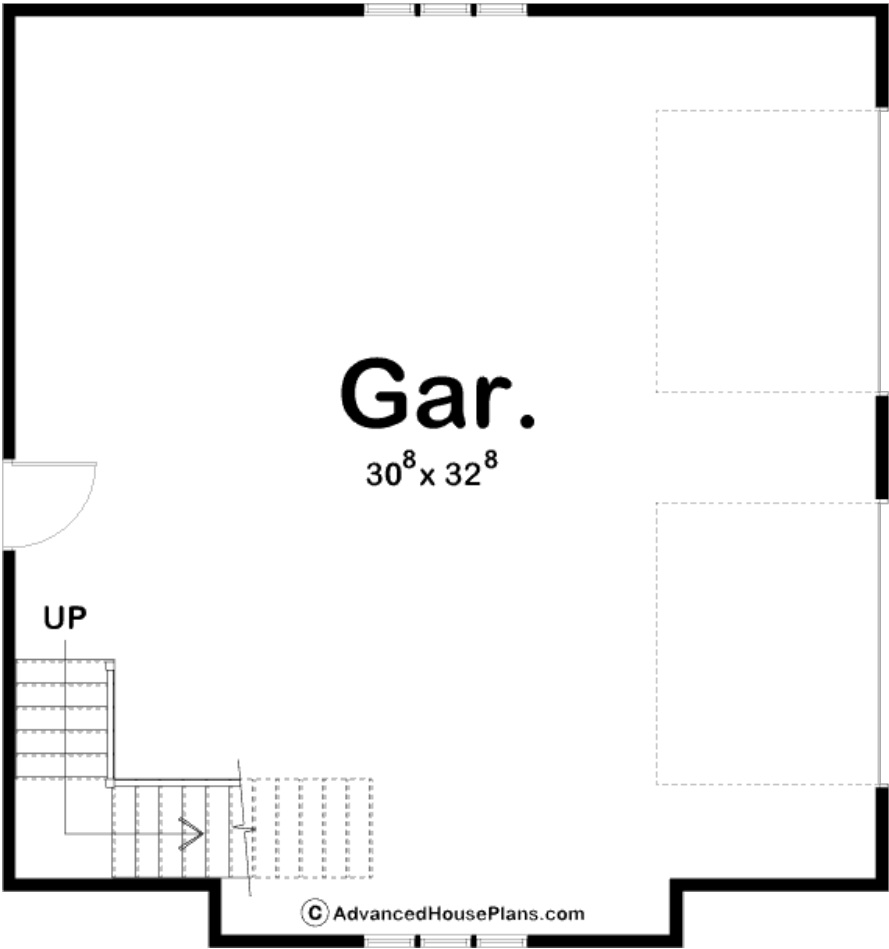
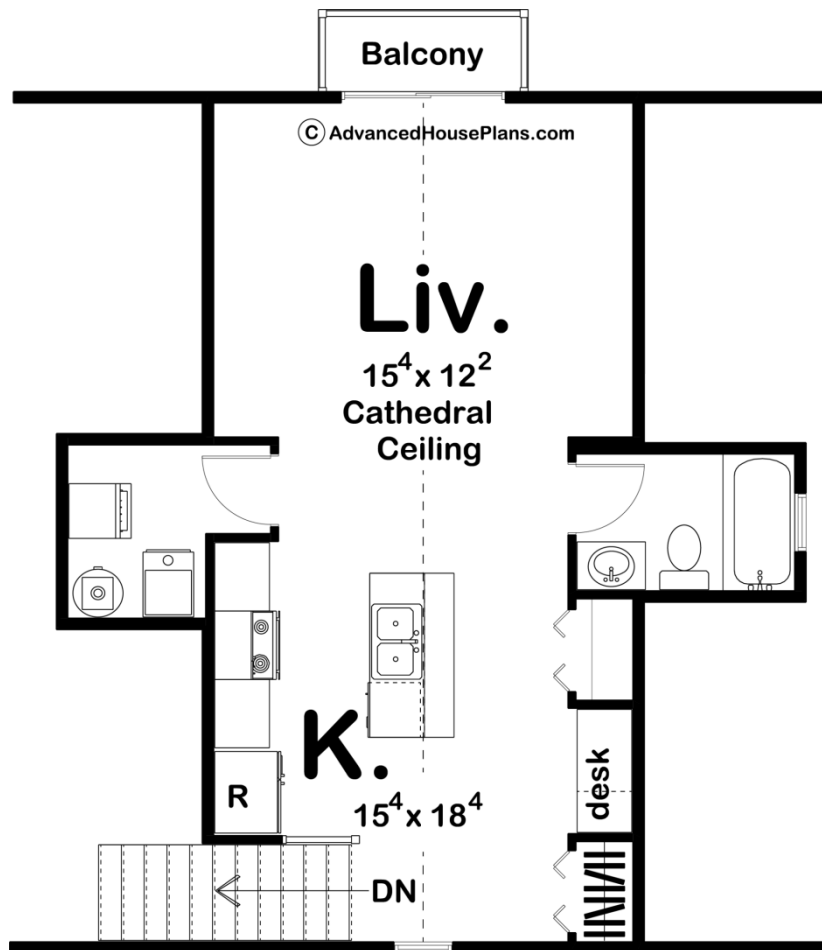




29019 - Hayes Data Sheet

556 SQ FT	1 BEDS	1 BATHS	2 BAYS	31' 4" WIDE	33' 4" DEEP
--------------	-----------	------------	-----------	----------------	----------------





Construction Specs

Layout

Bedrooms	1
Bathrooms	1
Garage Bays	2

Square Footage

Second Level	556 Sq. Ft.
Garage	1014 Sq. Ft.
Total Finished Area	556 Sq. Ft.

Exterior Dimensions

Width	31' 4"
Depth	33' 4"

Default Construction Stats

Stats are unique to the individual plan.

Foundation Type	Slab
Exterior Wall Construction	2x4

Roof Pitches	9/12 Primary
Main Wall Height	9'
Second Wall Height	7'

Plan Description

The Hayes is a beautiful Craftsman-style carriage house plan. The exterior features wood garage doors and stone accents. Inside, the 2 car garage lies under a studio apartment. The studio apartment includes a great room that doubles as the primary bedroom. The Hayes also features a full kitchen complete with a large island. A built-in desk provides a great place to work or play. A balcony looks out from the great room.