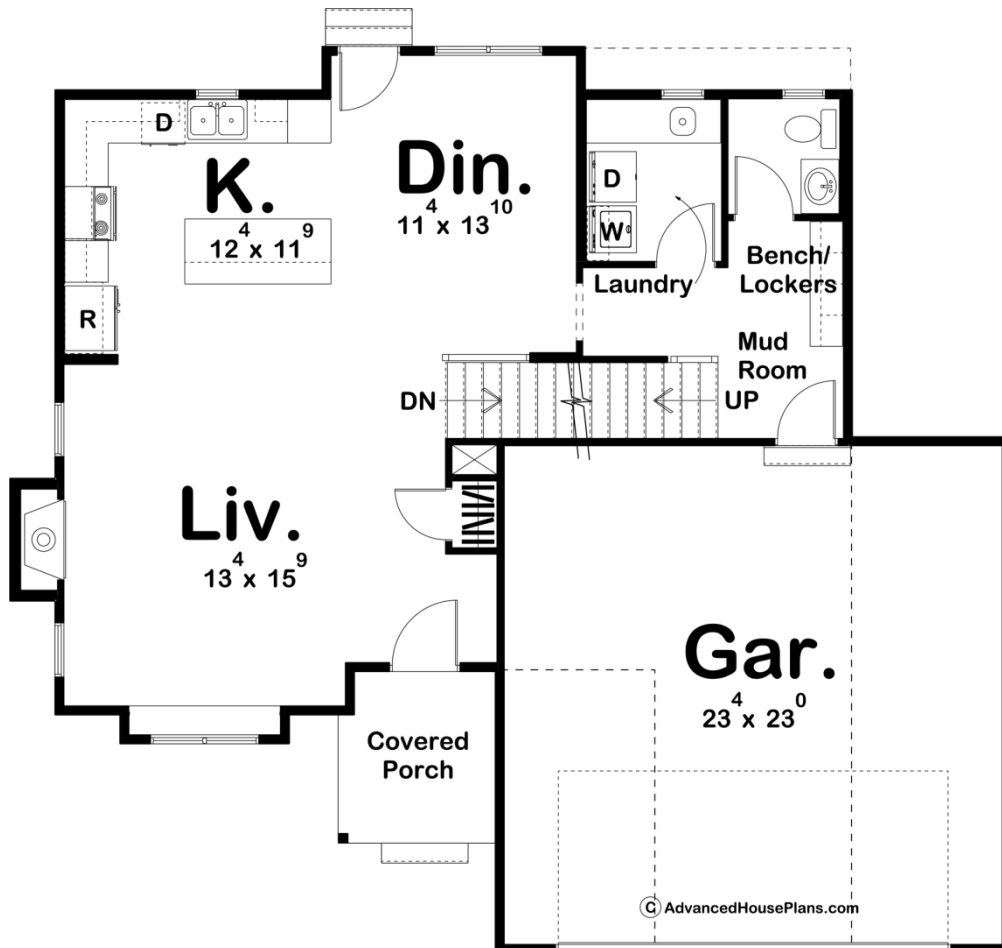
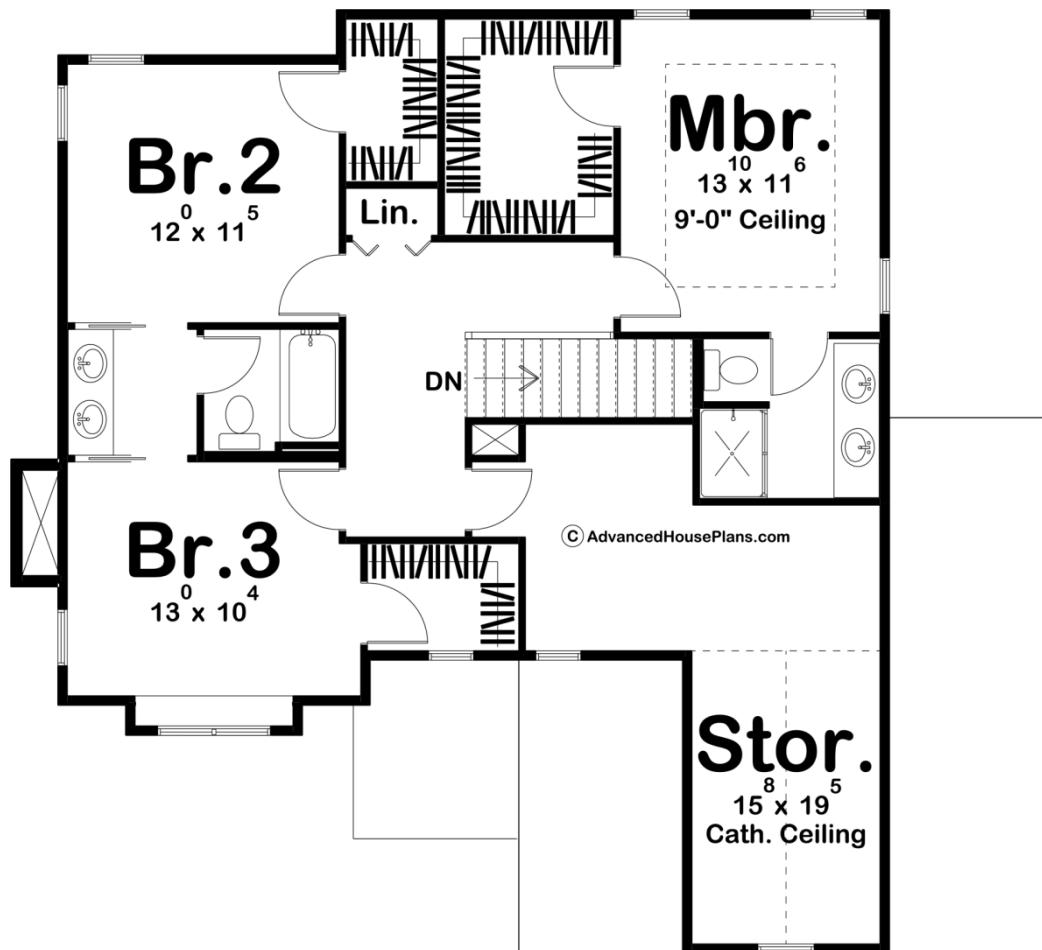




29703 - Bradley Farms Data Sheet

1753 SQ FT	3 BEDS	3 BATHS	2 BAYS	46' 0" WIDE	41' 8" DEEP
---------------	-----------	------------	-----------	----------------	----------------





Construction Specs

Layout

Bedrooms	3
Bathrooms	3
Garage Bays	2

Square Footage

Main Level	885 Sq. Ft.
Second Level	868 Sq. Ft.
Garage	557 Sq. Ft.
Total Finished Area	1753 Sq. Ft.

Exterior Dimensions

Width	46' 0"
Depth	41' 8"

Default Construction Stats

Stats are unique to the individual plan.

Foundation Type	Basement
-----------------	----------

Exterior Wall Construction	2x4
Roof Pitches	6/12 Primary, 6/12 4/12 Secondary
Foundation Wall Height	9'
Main Wall Height	9'
Second Wall Height	8'

Plan Description

The appearance of this family-friendly, Modern Farmhouse style, 2-story house plan imparts a sense of solidity and simpler times. Inside from the covered front porch, guests are received into the openly defined living room with its warming fireplace. A few steps farther in reveal the island kitchen and adjacent dining area with access to the outdoors. A utility area hosts the staircase to the upper level and includes a laundry room, powder bath and mudroom with a built-in bench -- which accesses the 2-car garage. Upstairs, the master suite is separated from the secondary bedrooms for privacy. The master bath includes a walk-in shower, along with a sizeable walk-in closet. Bedrooms 2 and 3 share a jack and jill bath. Across from bedroom 3, an unfinished storage area adds the potential of 260 sq. ft. of usable space, where the possibilities are endless.