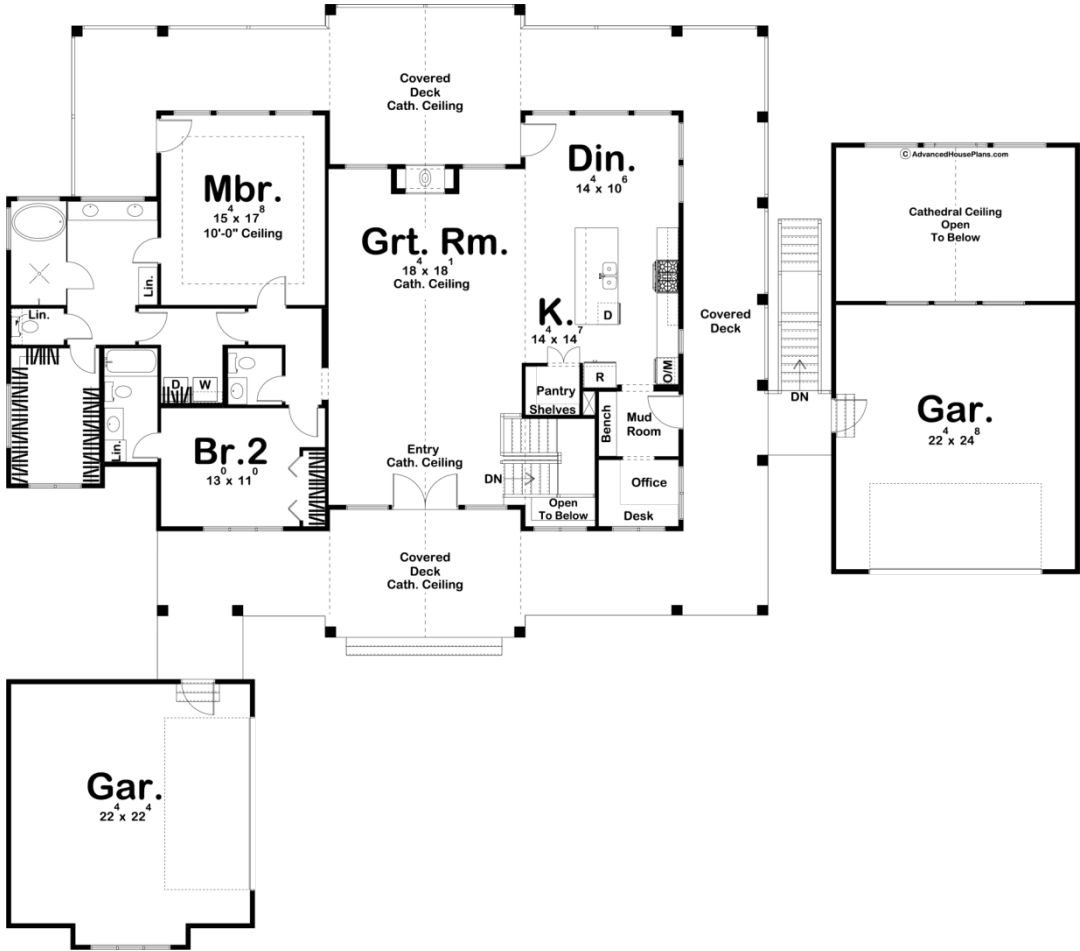
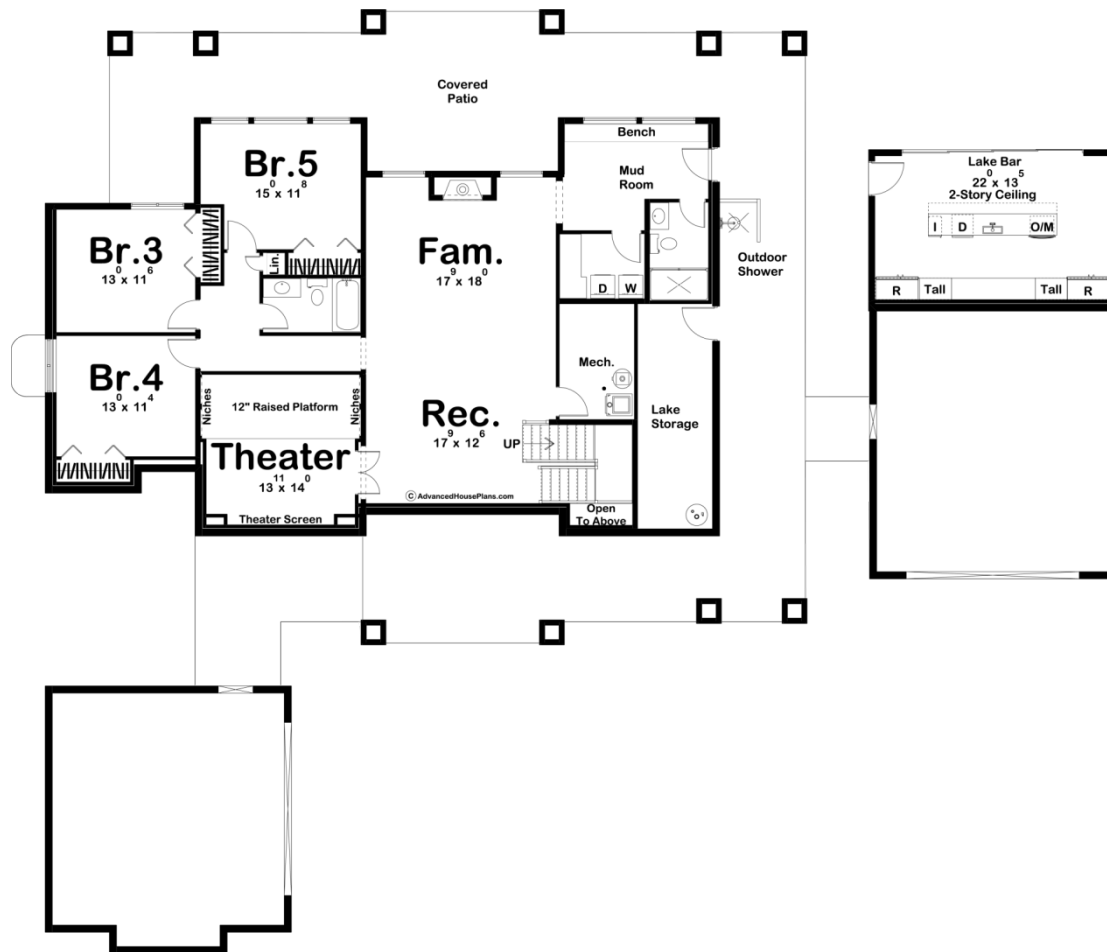




29959 - Valley View Data Sheet

2135 SQ FT	2 BEDS	3 BATHS	4 BAYS	100' 0" WIDE	88' 0" DEEP
---------------	-----------	------------	-----------	-----------------	----------------





Construction Specs

Layout

Bedrooms	2
Bathrooms	3
Garage Bays	4

Square Footage

Main Level	2135 Sq. Ft.
Covered Area	1635 Sq. Ft.
Garage	1126 Sq. Ft.
Total Finished Area	2135 Sq. Ft.

Exterior Dimensions

Width	100' 0"
Depth	88' 0"

Default Construction Stats

Stats are unique to the individual plan.

Foundation Type	Walkout
-----------------	---------

Exterior Wall Construction	2x4
Roof Pitches	8/12 Primary, 10/12 Secondary
Foundation Wall Height	9'
Main Wall Height	10'

Plan Description

If you are looking for a lake home with plenty of outdoor space, look no further than the Valley View plan. The exterior of the house has a unique curb appeal with its modern farmhouse styling. The exterior features board and batten siding, wood beams, and large windows. The split garage immediately sets this home apart from the others. Both 2 car garages are connected to the house by a massive covered deck that wraps all the way around the rear of the house. Just inside the home, you'll walk into a large entry with a soaring cathedral ceiling that flows into the great room. The great room is warmed by a fireplace and lies under a cathedral ceiling. The kitchen and dining room are open to the great room. The kitchen includes a large walk-in pantry and a large island with a snack bar. Behind the kitchen, you will find a wonderful pocket office with a desk. On the left side of the home, you'll find 2 bedrooms. The master suite includes a large bathroom with his/her vanities, a wet room, an enclosed toilet, and a huge walk-in closet. Bedroom 2 has access to its own bathroom as well. An optional finished basement adds 2072 sq ft of finished space that includes amazing amenities like a theater room with a raised seating platform, a rec area, 3 additional bedrooms, an additional family room, and a mudroom with a bathroom that allows you to shower on your way in from the water. A lake bar on the backside of the garage opens up to the waterfront for your outdoor entertainment.