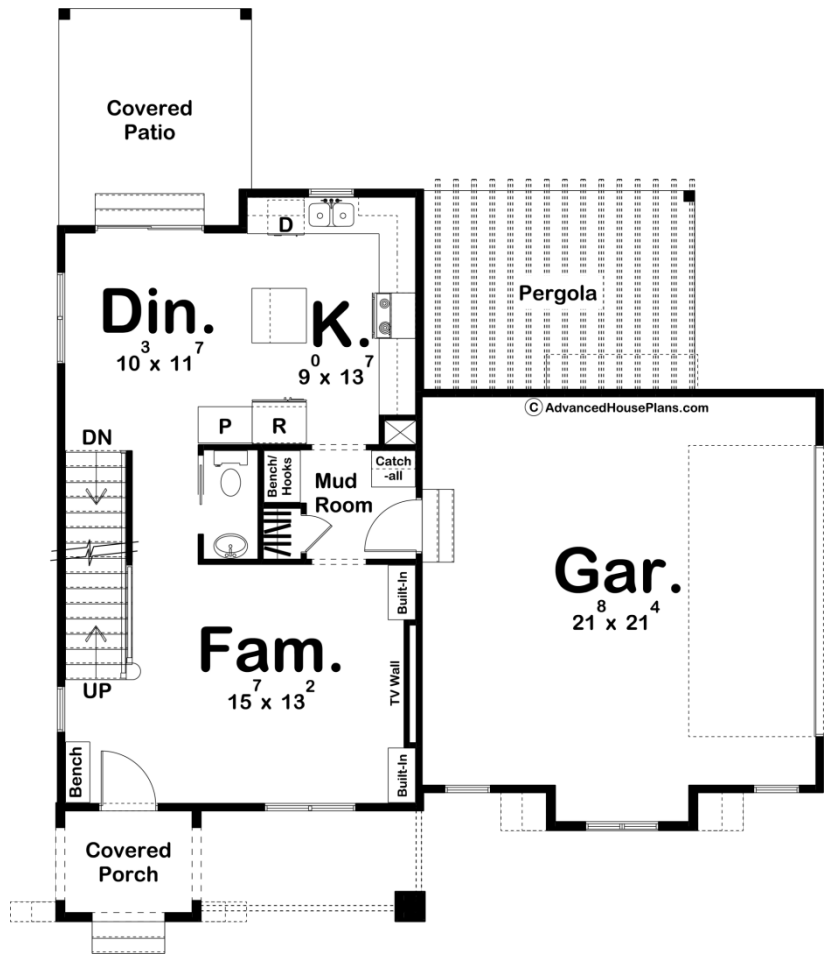
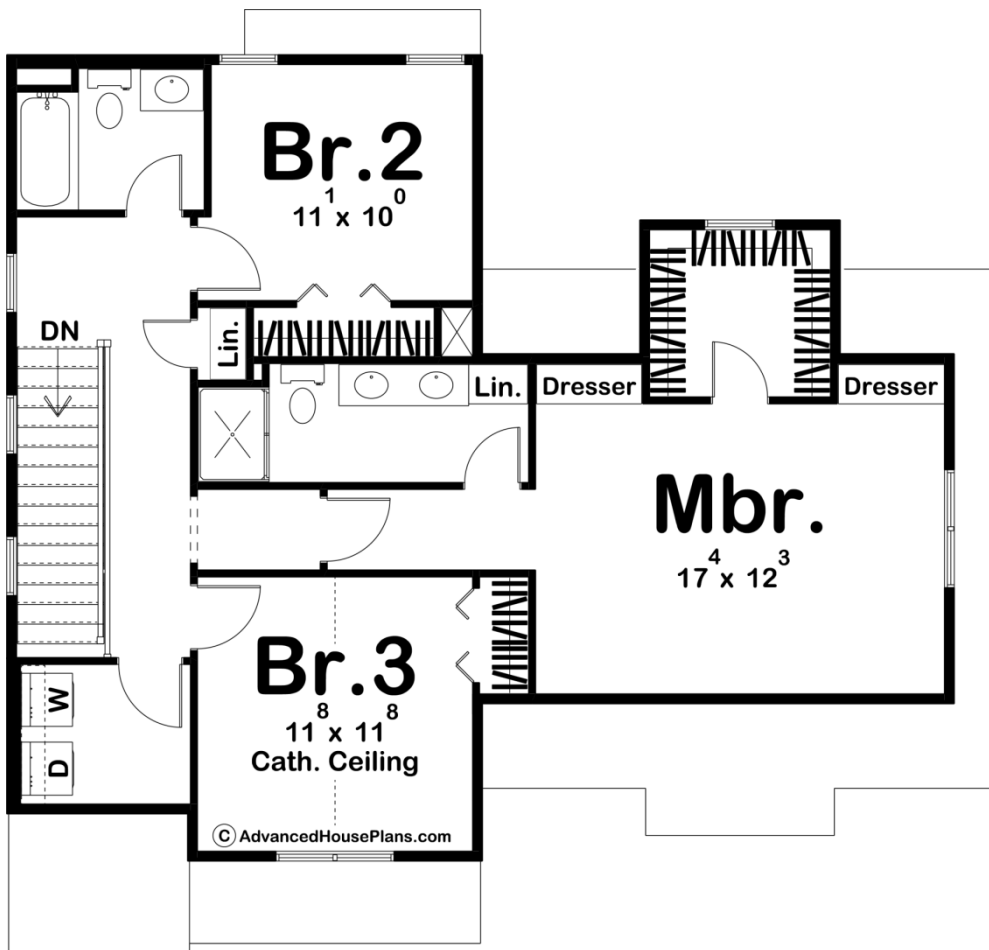




29937 - Foxglove Data Sheet

| | | | | | |
|---------------|-----------|------------|-----------|----------------|----------------|
| 1614 SQ FT | 3 BEDS | 3 BATHS | 2 BAYS | 42' 0" WIDE | 40' 0" DEEP |
|---------------|-----------|------------|-----------|----------------|----------------|





Construction Specs

Layout

| | |
|-------------|---|
| Bedrooms | 3 |
| Bathrooms | 3 |
| Garage Bays | 2 |

Square Footage

| | |
|---------------------|--------------|
| Main Level | 659 Sq. Ft. |
| Second Level | 955 Sq. Ft. |
| Garage | 500 Sq. Ft. |
| Total Finished Area | 1614 Sq. Ft. |

Exterior Dimensions

| | |
|-------|--------|
| Width | 42' 0" |
| Depth | 40' 0" |

Default Construction Stats

Stats are unique to the individual plan.

| | |
|-----------------|----------|
| Foundation Type | Basement |
|-----------------|----------|

| | |
|----------------------------|------------------------------|
| Exterior Wall Construction | 2x4 |
| Roof Pitches | 6/12 Primary, 4/12 Secondary |
| Foundation Wall Height | 9' |
| Main Wall Height | 9' |
| Second Wall Height | 8' |

Plan Description

The Foxglove plan is a beautiful modern cottage style house plan. The exterior features white stucco, light stone, and wood accents. Once you enter the house through the front covered porch, you'll find yourself in a large living room with built-in shelves and a tv wall. The kitchen includes an island and a reach-in pantry. Upstairs, you'll find 3 bedrooms including the master suite. The master bedroom includes a walk-in closet, dual built-in dressers, his/her vanities, and a walk-in shower. Back on the main floor, the home's 2 car side load garage accesses the home through a practical mudroom with a catch all.